

Service Information

Mazda Motor Corporation

3-1, Shinchi, Fuchu-cho, Aki-gun
Hiroshima 730-8670, Japan
TEL : 81(82)287-5323
FAX : 81(82)287-5220



Category F	Technical	Ref. No. E031/08	Page 1 of 2
Coverage <input type="checkbox"/> Distributor only <input checked="" type="checkbox"/> Please inform your dealers		Date Issued September 30, 2008	
Please convey this information to your <input type="checkbox"/> Director <input checked="" type="checkbox"/> General Manager <input checked="" type="checkbox"/> Warranty Dept. <input checked="" type="checkbox"/> Parts Dept. <input checked="" type="checkbox"/> Training Dept. <input checked="" type="checkbox"/> Field Rep.		Attachment	
Applicable Model All Models with Oxygen Sensors	Applicable Countries or Specifications Worldwide		

Subject: Oxygen Sensors Removal Caution

Revision Note: This information supersedes E013/07 of March 20, 2007. Removal procedure has been updated.

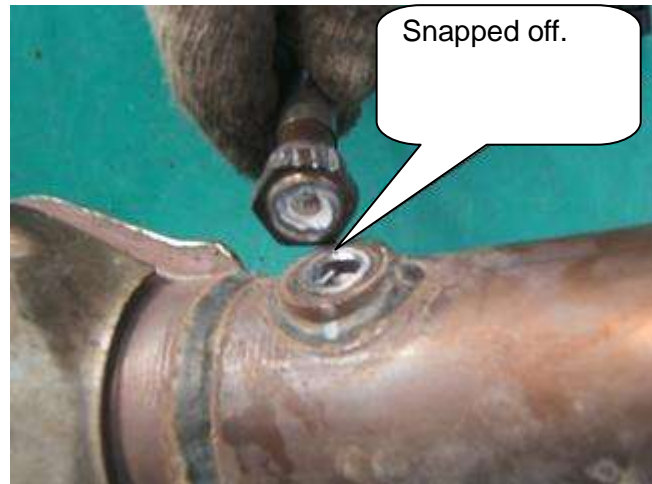
Description

Use WD-40 or any equivalent lubricant when removing the oxygen sensor. Otherwise the tip of the oxygen sensor may break off, which will be difficult to remove. In the worst case, both the sensor and catalyst converter/exhaust pipes will need to be replaced.

Damaged sensors



Worst case



Oxygen Sensor Removal Procedure

1. Cool down engine for safety and job efficiency.
2. Mask the trunk of the oxygen sensor to prevent wetting.

Caution: Do NOT soak on the trunk area of the sensor (See the taped area in the picture). Contamination on porous ceramic coating could cause wrong signal output.

3. Spray the lubricant around the flange of the oxygen sensor.



Caution: Avoid excess spraying. Remaining flammable substance could catch fire. Wipe off lubricant if it remains.

4. Allow lubricant to reach the sensor threads for a minimum of 1 -2 minutes.

5. Turn 30 degree anti-clockwise first with SST (49 L018 001) or a special wrench.



6. Remove SST or a special wrench and spray lubricant AGAIN at the same place.

7. Allow lubricant to reach the sensor threads for a minimum of 1 -2 minutes.

8. Wipe off all excess lubricant.

9. Fit SST or a special wrench and re-start loosening the sensor out.

Note: If the sensor begins to bind, it may be necessary to remove the sensor out with repeating a tightening and loosening motion slowly.

10. Clean the sensor thread in catalyst converter or pipe with 18 mm X 1.5 mm tap.

11. Apply high concentration molybdenum disulfide grease (over 45%) on the sensor threads. MC recommends "NEVER-SEEZ"(L3Z5-40-589.)

12. Install the sensor and tighten to the standard torque shown in the workshop manual.

Warning: In case of the re-use of the oxygen sensor, remove masking tape completely to prevent catching fire.

Shinji Kanai
Manager, Technical Information Gr.
Technical Service Dept.
Mazda Motor Corporation
(2683100601 MC Internal use)