

Service Information

Mazda Motor Corporation

3-1, Shinchi, Fuchu-cho, Aki-gun
Hiroshima 730-8670, Japan
TEL : 81(82)287-5323
FAX : 81(82)287-5220

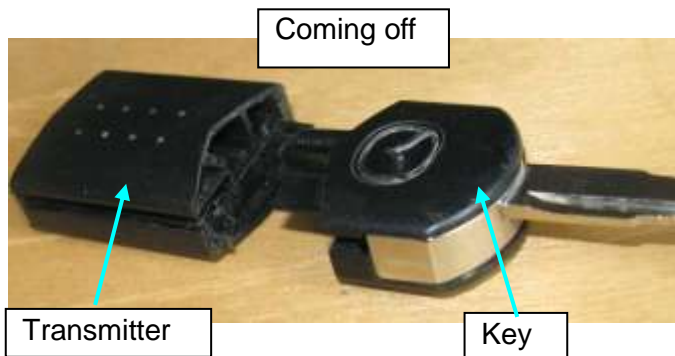


Category T	Repair Guidance	Ref. No. R072/08	Page 1 of 4
Coverage <input type="checkbox"/> Distributor only <input checked="" type="checkbox"/> Please inform your dealers		Date Issued September 4, 2008	
Please convey this information to your <input type="checkbox"/> Director <input checked="" type="checkbox"/> General Manager <input checked="" type="checkbox"/> Warranty Dept. <input checked="" type="checkbox"/> Parts Dept. <input checked="" type="checkbox"/> Training Dept. <input checked="" type="checkbox"/> Field Rep.		Date Revised	
Applicable Model Mazda3 (BK), Mazda6 (GG/GY), RX-8 (FE/SE) and BT-50 (UN) with Retractable Keyless Entry System		Applicable Countries or Specifications Worldwide (except China)	

Subject: Key Comes Off From Transmitter

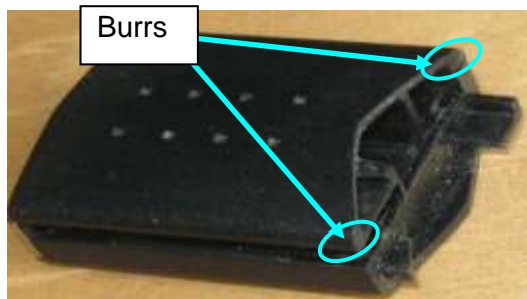
DESCRIPTION

Some customers may complain that the key comes off from the transmitter.



CAUSE

There are burrs on the both corners of the transmitter (back side). Due to them, the key cannot hook on the transmitter strong enough.



MASS PRODUCTION CHANGE

The mold tool for transmitter has been modified to prevent the burrs.

BEGINNING VIN & DATE OF BEGINNING VIN & Date of Modification

Mazda3 (BK)

US Spec.

JM1 BK**** ** 186875 June 30, 2008

EC Spec.

JMZ BK**** ** 775491 June 30, 2008

ADR Spec.

JM0 BK**** ** 429286 June 30, 2008

General Spec.

JM6 BK**** ** 429286 June 30, 2008

JM7 BK**** ** 429286 June 30, 2008

RX-8 (FE/SE)

US Spec.

JM1 FE**** ** 401776 June 30, 2008

EC Spec.

JMZ SE**** ** 300502 June 30, 2008

ADR Spec.

JM0 FE**** ** 300210 June 30, 2008

BT-50 (UN)

EC Spec.

JMZ UN**** ** 812734 August 1, 2008

ADR Spec.

MM0 UN**** ** 812734 August 1, 2008

General Spec.

MM6 UN**** ** 812734 August 1, 2008

MM7 UN**** ** 812734 August 1, 2008

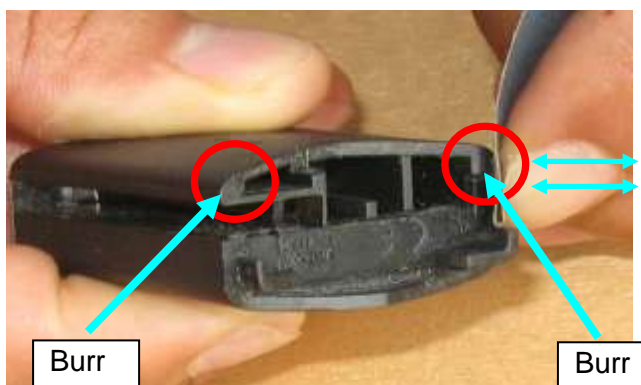
MM8 UN**** ** 812734 August 1, 2008

The production of Mazda6 (GG/GY) has been discontinued.

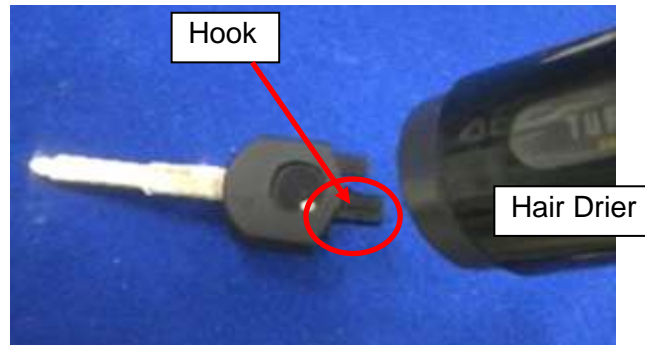
REPAIR PROCEDURE

When you encounter a customer complaint on this concern, remove the burrs from the both corners of the transmitter and adjust so that the key engages with the transmitter firmly.

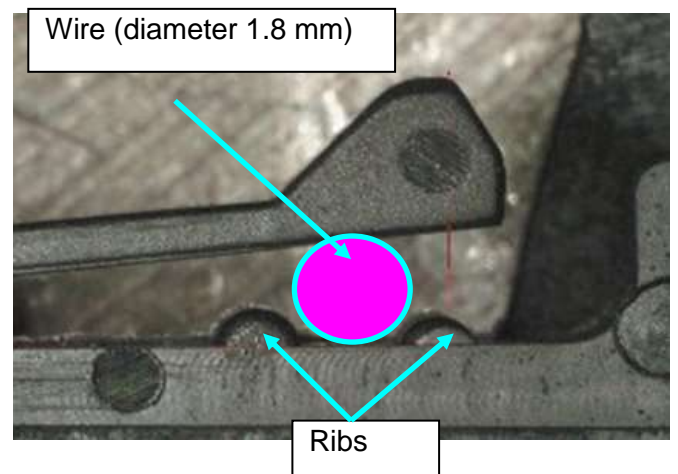
1. Using a sand paper, scrape off the burrs from the back side of the transmitter.
Note: Do not scrape off too much. Run the sand paper over the burrs only a couple of times to remove the burrs.



- Using a hair drier, apply heat to the hook of the key.
Note: Apply heat until the temperature of the hooks and the parts around the hooks is approximately 70 degrees Celsius. (Approximately 30 seconds with 1500W hair drier)



- After applying the heat, pass the wire (diameter 1.8 mm) through between the key hook and ribs.
Leave it until it goes down to a normal temperature, and remove the wire, then this step is finished.



- Insert the key into the transmitter firmly until a click is heard.



- Pull the key to confirm that the key does not come off from the transmitter.
If it still comes off, then replace the key with a new one.

WARRANTY INFORMATION

Symptom Code	91
Damage Code	9M
Causal Part No.	**** 67 5RY (Transmitter)
Q'ty	0
Operation No.	XXD3YXRX
Labor Hours	0.2Hrs.
Period Covered	Normal Warranty Period



Shinji Kanai
Manager, Technical Information Group
Technical Service Dept.
Mazda Motor Corporation
2822222914 (MC Internal Use)