

# Service Information

Mazda Motor Corporation

3-1, Shinchi, Fuchu-cho, Aki-gun  
Hiroshima 730-8670, Japan  
TEL : 81(82)287-5323  
FAX : 81(82)287-5220



Category <b>C</b>	<b>Repair Guidance</b>	Ref. No. R046/05 <b>C</b>	Page 1 of 3
Coverage <input type="checkbox"/> Distributor only <input checked="" type="checkbox"/> Please inform your dealers		Date Issued November 24, 2005	
Please convey this information to your <input checked="" type="checkbox"/> Warranty Dept. <input checked="" type="checkbox"/> Parts Dept. <input checked="" type="checkbox"/> Training Dept. <input type="checkbox"/> Director <input checked="" type="checkbox"/> General Manager <input type="checkbox"/> Field Rep.		Date Revised May 28, 2010	
Applicable Models  RX-8 (FE / SE)	Applicable Countries or Specifications  US, EC and ADR Spec.		

**[Updated]**

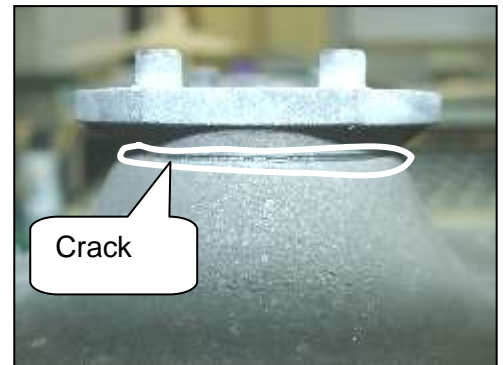
**Note: "Beginning VIN & Date of Modification" & "Parts information" have been updated.**

## Subject: Hesitation and Idle Vibration Due to Cracks on Engine Mount

### Problem Description

Some vehicles experience a crack appears on the RH side engine mount. As a result, the following symptoms may be observed.

1. When once releasing the accelerator pedal in 3rd gear / at less than 3,000 rpm / at 50km/h, then quickly depressing the accelerator pedal, hesitation may occur. This symptom can only be observed in this engine rpm and vehicle speed ranges.
2. When waiting at stoplights in D range, excessive body vibration may occur. This body vibration does not occur in N range.
3. When waiting at stoplights in D range, idle vibration may occur.



### Cause

Depending on a driving condition or engine condition, the RH side engine mount rubber may get deformed and wrinkled. As a result, the crack is caused starting from the wrinkles.

### Mass Production Change

The material of engine mount rubber has been changed.

### Beginning VIN & Date of Modification

#### **RX-8 equipped with AT US Spec.**

JM1 FE\*\*\*\* \*\* 404240                      December 2, 2009

#### **EC Spec.**

JMZ SE\*\*\*\* \*\* 300976                      December 2, 2009

#### **ADR Spec.**

JM0 FE\*\*\*\* \*\* 300898                      December 2, 2009

**RX-8 equipped with MT**

**US Spec.**

JM1 FE\*\*\*\*\* 404840 April 13, 2010

**EC Spec.**

JMZ SE\*\*\*\*\* 301254 April 13, 2010

**ADR Spec.**

JM0 FE\*\*\*\*\* 301055 April 13, 2010

Repair Procedure

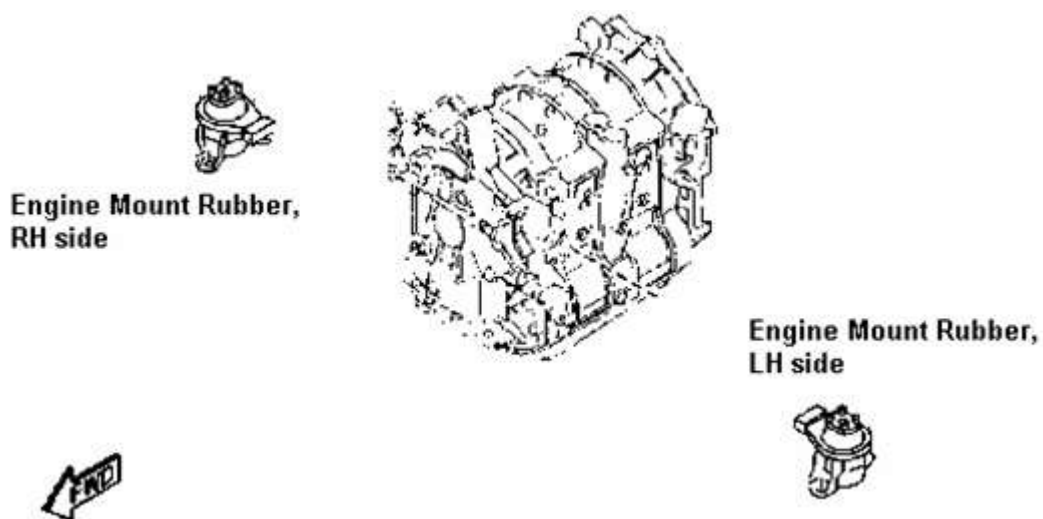
When you encounter a customer complaint on this concern, replace both right and left engine mount rubbers with modified ones.

Parts Information

Part No.		Part Name	Q'ty	Int.	Note
New	Old				
FE05-39-040A	FE05-39-040	Engine Mount Rubber, RH	1	A	For MT
FE05-39-050A	FE05-39-050	Engine Mount Rubber, LH	1	A	
FE01-39-040A	FE01-39-040	Engine Mount Rubber, RH	1	A	For AT
FE01-39-050A	FE01-39-050	Engine Mount Rubber, LH	1	A	

Interchangeability Code:

A: A new part can be used in place of the former part, but the former part cannot be used in place of the new part



WARRANTY INFORMATION

Symptom Code	83
Damage Code	9M
Causal Part No.	****-39-040* (Engine Mount Rubber, RH)
Q'ty	1
Operation No.	XXD5BXRX
Labor Hours	0.8 Hrs.
Period Covered	Normal Warranty Period

Note 1: As for the left-side of engine mount rubber, claim it as a related part.

Shinji Kanai  
Manager, Technical Information Gr.  
Technical Service Dept.  
Mazda Motor Corp.  
14A0700139, 1850955925  
(MC Internal Use Only)