

# Service Information

Mazda Motor Corporation

3-1, Shinchi, Fuchu-cho, Aki-gun  
Hiroshima 730-8670, Japan  
TEL : 81(82)287-5323  
FAX : 81(82)287-5220



|  |                        |  |                |
|--|------------------------|--|----------------|
| Category<br><b>T</b>   | <b>Repair Guidance</b> | Ref. No.<br>R022/10  | Page<br>1 of 5 |
| Coverage<br><input type="checkbox"/> Distributor only <input checked="" type="checkbox"/> Please inform your dealers   |                        | Date Issued<br>March 19,2010   |                |
| Please convey this information to your <input type="checkbox"/> Director <input checked="" type="checkbox"/> General Manager<br><input checked="" type="checkbox"/> Warranty Dept. <input checked="" type="checkbox"/> Parts Dept. <input checked="" type="checkbox"/> Training Dept. <input checked="" type="checkbox"/> Field Rep. |                        | Date Revised   |                |
| Applicable Model<br>Mazda2 (DE), Mazda3 (BL), Mazda5 (CR),<br>Mazda6 (GH), CX-7 (ER), CX-9 (TB), MX-5 (NC),<br>RX-8 (FE/SE)  |                        | Applicable Countries or Specifications<br><br>Worldwide (Except North America) |                |

## Subject: Unable to Remove Aftermarket Accessories from Accessory Socket

### DESCRIPTION

Some customers may complain that the aftermarket accessories connected to vehicle's accessory socket cannot be removed.

Accessory socket



### CAUSE

Some aftermarket accessories stuck to the groove inside the accessory socket.

### MASS PRODUCTION CHANGE

The groove inside the socket has been eliminated.

### BEGINNING VIN & DATE OF MODIFICATION

#### **EU Spec.**

#### **Mazda3 (BL)**

GS4B JMZBL\*\*\*\*\* 181727 January 19, 2010

CD84 JMZBL\*\*\*\*\* 180132 January 11, 2010

#### **Mazda5 (CR)**

CD84 JMZCR\*\*\*\*\* 365527 January 11, 2010

CD83 JMZCR\*\*\*\*\* 365999 January 19, 2010

#### **Mazda2 (DE)**

JMZDE\*\*\*\*\* 135708 January 11, 2010

#### **CX-7 (ER)**

GS4C JMZER\*\*\*\*\* 207805 January 19, 2010

CD84 JMZER\*\*\*\*\* 207423 January 11, 2010

#### **Mazda6 (GH)**

JMZGH\*\*\*\*\* 404029 January 19, 2010

**MX-5 (NC)**

JMZNC\*\*\*\*\* 208924 January 11, 2010

**RX-8 (SE)**

CD84 JMZSE\*\*\*\*\* 301007 January 11, 2010

**CX-9 (TB)**

TBD

**General Spec.**

**Mazda3 (BL)**

GS4B JM0BL\*\*\*\*\* 148346 January 19, 2010

JM6BL\*\*\*\*\* 148346 January 19, 2010

JM7BL\*\*\*\*\* 148346 January 19, 2010

CD84 JM0BL\*\*\*\*\* 146457 January 11, 2010

JM6BL\*\*\*\*\* 146457 January 11, 2010

JM7BL\*\*\*\*\* 146457 January 11, 2010

**Mazda5 (CR)**

CD84 JM6CR\*\*\*\*\* 318212 January 11, 2010

JM7CR\*\*\*\*\* 318212 January 11, 2010

CD83 JM6CR\*\*\*\*\* 318432 January 19, 2010

JM7CR\*\*\*\*\* 318432 January 19, 2010

**Mazda2 (DE)**

D652 JM0DE\*\*\*\*\* \*\*\*\*\* February 12, 2010

JM6DE\*\*\*\*\* \*\*\*\*\* February 12, 2010

JM7DE\*\*\*\*\* \*\*\*\*\* February 12, 2010

CD84 JM0DE\*\*\*\*\* 151066 January 11, 2010

JM6DE\*\*\*\*\* 151066 January 11, 2010

JM7DE\*\*\*\*\* 151066 January 11, 2010

**CX-7 (ER)**

GS4C JM0ER\*\*\*\*\* 206142 January 19, 2010

JM6ER\*\*\*\*\* 206142 January 19, 2010

JM7ER\*\*\*\*\* 206142 January 19, 2010

CD84 JM0ER\*\*\*\*\* 205515 January 11, 2010

JM6ER\*\*\*\*\* 205515 January 11, 2010

JM7ER\*\*\*\*\* 205515 January 11, 2010

**RX-8 (FE)**

CD84 JM0FE\*\*\*\*\* 300935 January 11, 2010

**Mazda6 (GH)**

JM0GH\*\*\*\*\* 140329 January 19, 2010

JM6GH\*\*\*\*\* 140329 January 19, 2010

JM7GH\*\*\*\*\* 140329 January 19, 2010

**MX-5 (NC)**

JM0NC\*\*\*\*\* 201997 January 11, 2010

JM7NC\*\*\*\*\* 201997 January 11, 2010

**CX-9 (TB)**

GS4C JM0TB\*\*\*\*\* 204360 January 19, 2010

GS4C JM7TB\*\*\*\*\* 204360 January 19, 2010

CD84 JM0TB\*\*\*\*\* 203973 January 11, 2010

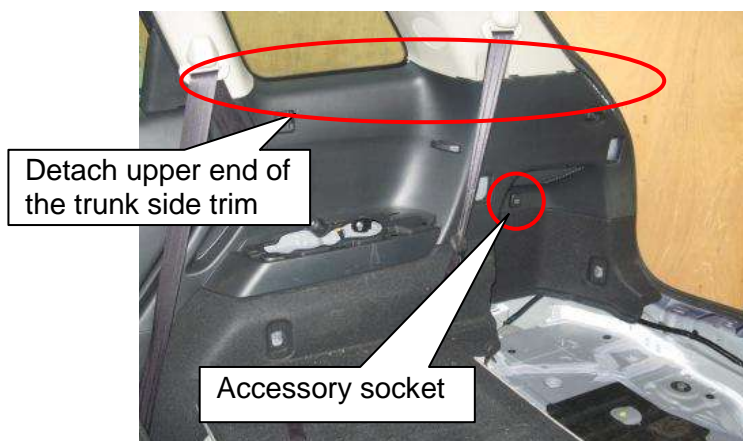
CD84 JM7TB\*\*\*\*\* 203973 January 11, 2010

## REPAIR PROCEDURE

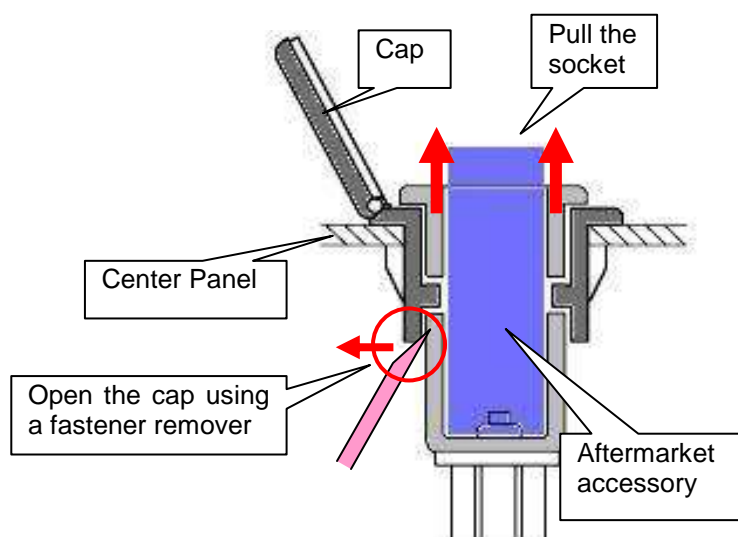
1. Remove the concerned accessory socket according to Workshop Manual "ACCESSORY SOCKET REMOVAL / INSTALLATION".

For removal of accessory socket equipped on the trunk side trim, refer to the procedure below.

- (1) Remove the rear package tray and the trunk end trim.
- (2) Remove the screws or the fasteners fixing the trunk side trim, then detach upper end of the trunk side trim.
- (3) Reach the accessory socket by widely moving the rear end of the trunk side trim.

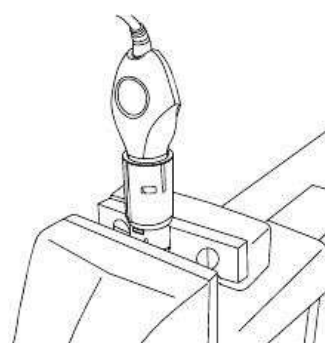


2. Remove the accessory socket in the direction of the arrow shown in the figure while opening the caps using a tape-wrapped fastener remover.



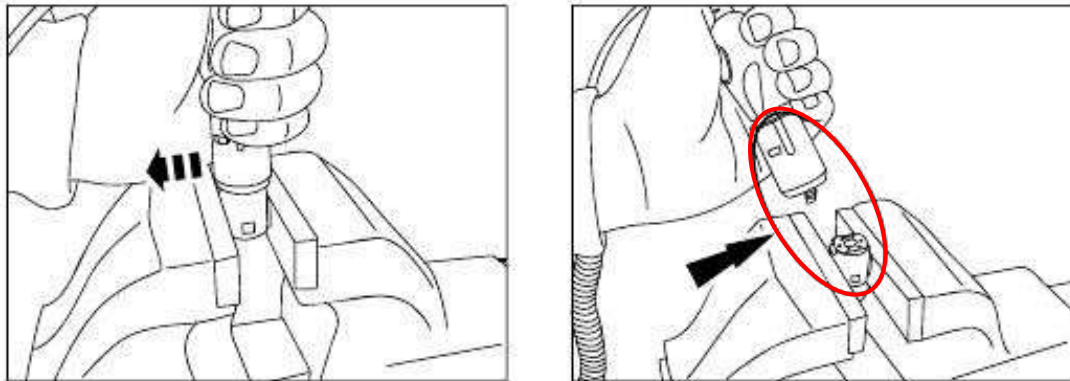
3. Remove the accessory from the old accessory socket as below.

- a. Secure the plastic connector housing of the accessory socket in a vice.  
**NOTE: DO NOT overtighten the vise to avoid breaking the plastic connector housing, otherwise the rivet connecting the plastic connector housing to the socket will have to be drilled out.**

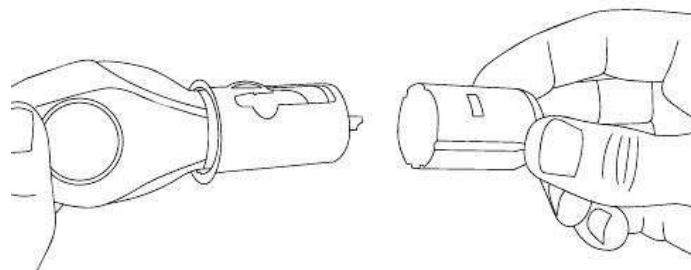


- b. Take hold of the upper part of the accessory socket and accessory, and then pull towards you until the plastic connector separates from the housing.

**NOTE: Grab as much of the socket as possible to prevent breaking the accessory.**

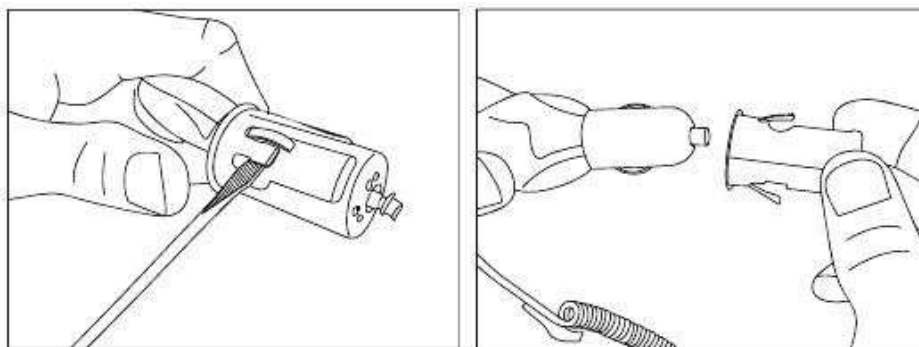


- c. Remove the outer housing from the inner housing.



- d. Pry and bend the metal tabs upward on both sides of the inner housing using a small flat screwdriver, then remove the accessory from the inner housing.

**NOTE: Discard the original accessory socket.**



4. Install the new accessory socket on chart below & other parts in the reverse order of removal.
5. Verify repair, and return accessory to customer.

PART INFORMATION

| Part Number    |                | Part Name       | Q'ty | Remark           |
|----------------|----------------|-----------------|------|------------------|
| New            | Old            |                 |      |                  |
| D652-66-290A   | D652-66-290    | POWER<br>OUTLET | 1    | General          |
| GS4B-66-290C   | GS4B-66-290B   |                 |      | Europe & General |
| GS4C-66-290C   | GS4C-66-290B   |                 |      |                  |
| CD83-66-290B** | CD83-66-290A** |                 |      |                  |
| CD84-66-290C02 | CD84-66-290B02 |                 |      |                  |

\*\* : Color code (02 or 34)

WARRANTY INFORMATION

|                            |   |
|----------------------------|---|
| Symptom Code               | 90  |
| Damage Code                | 97  |
| Causal Part No.            | Part number of new replacement part   |
| Q'ty                       | 1   |
| Operation No./ Labor Hours | <p><b>Socket equipped on center panel</b><br/>           XXF1DARX: 0.3Hrs. (Mazda3, Mazda5 with rear vent)<br/>                             0.4Hrs. (CX-9)<br/>                             0.5Hrs. (Mazda6, MX-5)<br/>           XXF1DDR: 0.4Hrs. (Mazda5 without rear vent)</p> <p><b>Socket equipped on console</b><br/>           XXF1DBRX: 0.3Hrs. (Mazda2)<br/>                             0.4Hrs. (Mazda3)<br/>                             0.5Hrs. (Mazda6, CX-7, RX-8)<br/>                             0.6Hrs. (CX-9)</p> <p><b>Socket equipped on trunk side trim</b><br/>           XXF1DCRX: 0.4Hrs. (Mazda5, CX-9)</p> |
| Period Covered             | Normal Warranty Period  |

Shinji Kanai  
 Manager, Technical Information Gr.  
 Technical Service Dept.  
 Mazda Motor Corporation  
 2961863949 (MC Internal Use)