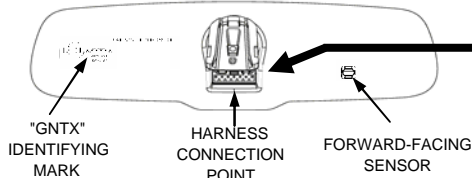
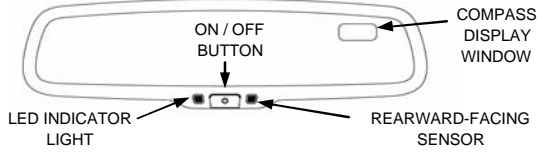


# Gentex Auto-Dimming Mirror Products



## AUTO-DIMMING COMPASS



### PART ORDERING MATRIX

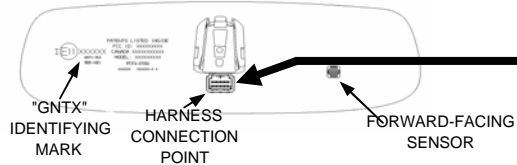
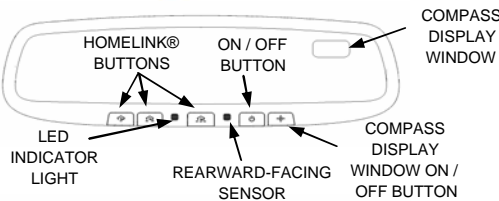
VEHICLE	MIRROR HEAD	INSTALLATION PARTS KIT
MAZDA 3	0000 8C Z01	0000 8C L08
MAZDA 3 W/RAIN SENSOR	0000 8C Z03	0000 8C L05
MAZDA 5	0000 8C Z01	0000 8C L01

### CONNECTOR PINOUT GUIDE

PIN 1	PIN 2	PIN 3	PIN 4	PIN 5	PIN 6	PIN 7
12V DC	GROUND	N/A	N/A	N/A	N/A	N/A



## AUTO-DIMMING COMPASS / HOMELINK®



### PART ORDERING MATRIX

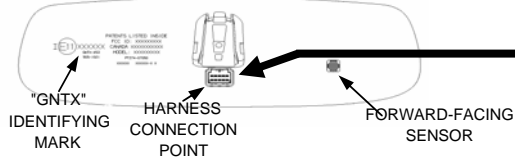
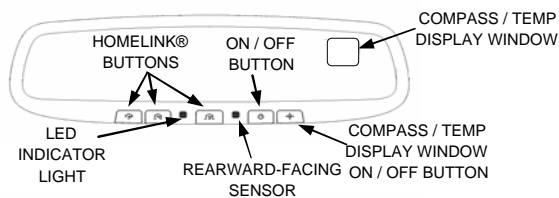
VEHICLE	MIRROR HEAD	INSTALLATION PARTS KIT
MAZDA 3	0000 8C Z02	0000 8C L07
MAZDA 3 W/RAIN SENSOR	0000 8C Z04	0000 8C L06
MAZDA 5	0000 8C Z02	0000 8C L04

### CONNECTOR PINOUT GUIDE

PIN 1	PIN 2	PIN 3	PIN 4	PIN 5
N/A	N/A	GROUND	N/A	N/A
PIN 10	PIN 9	PIN 8	PIN 7	PIN 6
BATT	N/A	N/A	N/A	12V DC



## AUTO-DIMMING COMPASS / TEMP / HOMELINK®



### PART ORDERING MATRIX

VEHICLE	MIRROR HEAD	INSTALLATION PARTS KIT
MAZDA 5	0000 8C G16	0000 8C L27
MAZDA MX-5	0000 8C G16	0000 8C D20

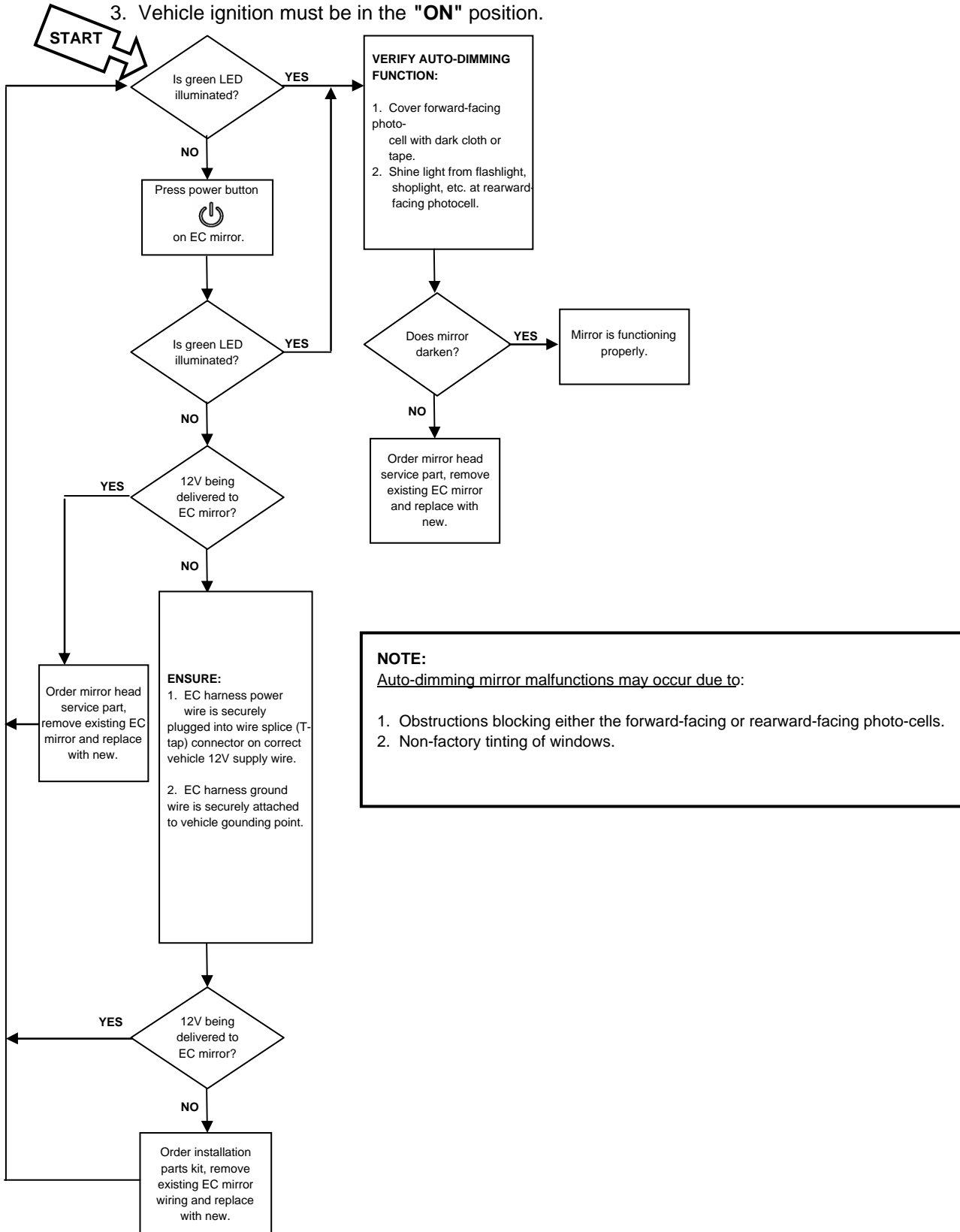
### CONNECTOR PINOUT GUIDE

PIN 1	PIN 2	PIN 3	PIN 4	PIN 5
TEMP	TEMP	GROUND	N/A	N/A
PIN 10	PIN 9	PIN 8	PIN 7	PIN 6
BATT	N/A	N/A	N/A	12V DC

# AUTO-DIMMING TROUBLE-SHOOTING GUIDE

**Before attempting to trouble-shoot EC mirror Auto-Dimming function, ensure the following:**

1. Mirror is manufactured by **Gentex Corporation** (the letters GNTX will be etched onto the back of the mirror and the compass display window will be in the mirror glass).
2. EC mirror harness must be fully plugged into EC mirror.
3. Vehicle ignition must be in the "ON" position.



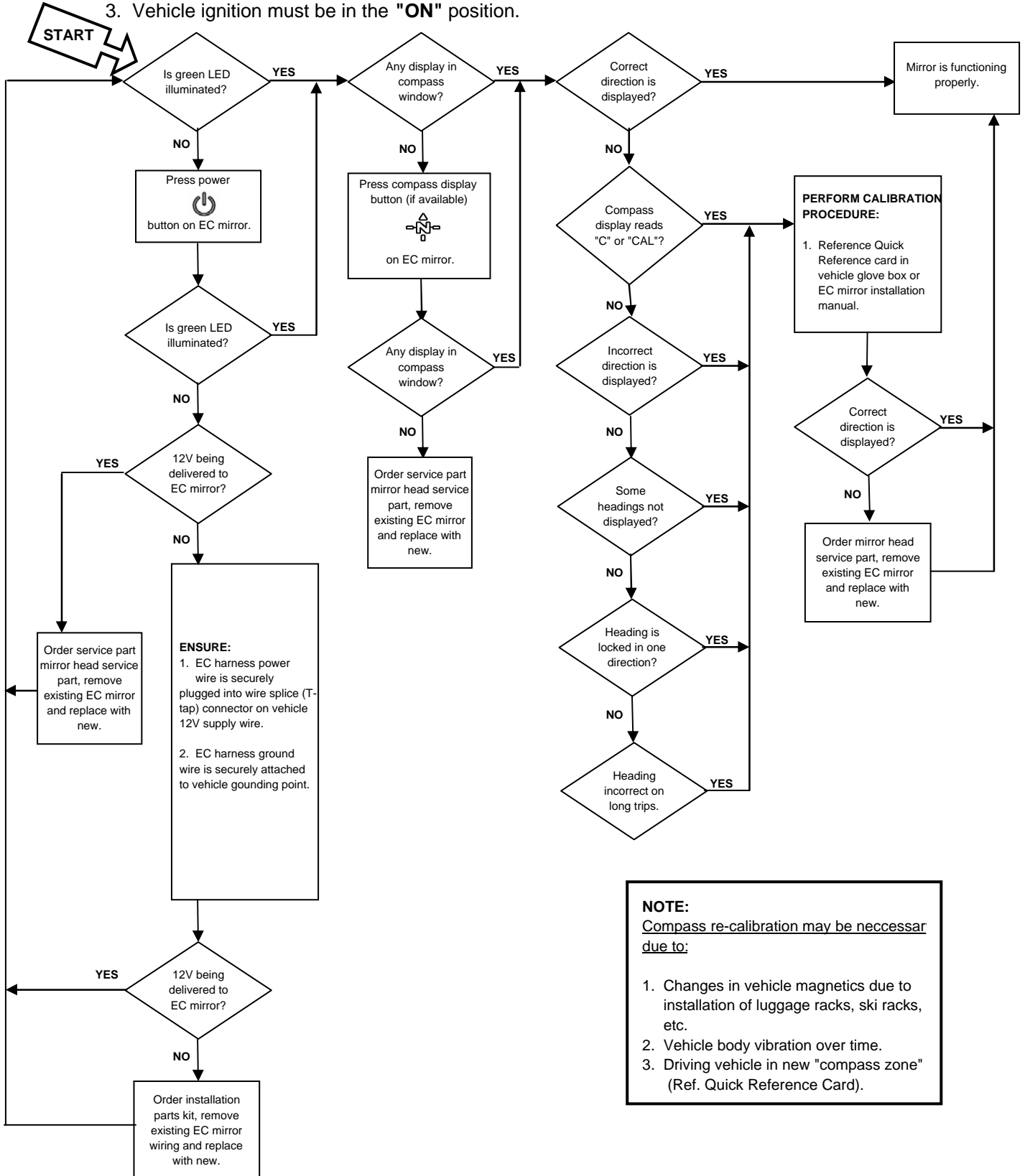
**NOTE:**  
Auto-dimming mirror malfunctions may occur due to:

1. Obstructions blocking either the forward-facing or rearward-facing photo-cells.
2. Non-factory tinting of windows.

# COMPASS TROUBLE-SHOOTING GUIDE

**Before attempting to trouble-shoot EC mirror compass function, ensure the following:**

1. Mirror is manufactured by **Gentex Corporation** (the letters GNTX will be etched onto the back of the mirror and the compass display window will be in the mirror glass).
2. EC mirror harness must be fully plugged into EC mirror.
3. Vehicle ignition must be in the "ON" position.



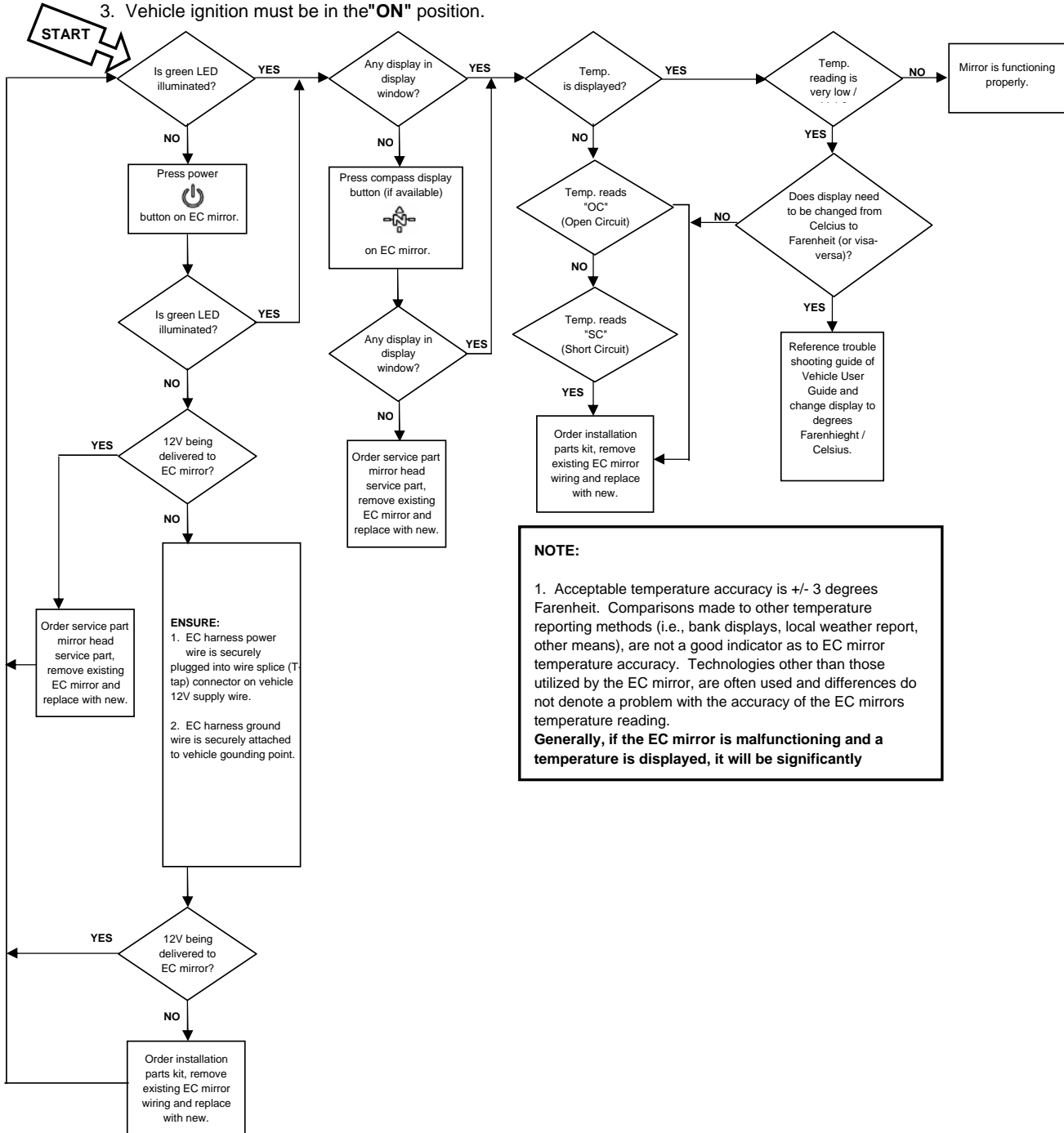
**NOTE:**  
Compass re-calibration may be necessary due to:

1. Changes in vehicle magnetics due to installation of luggage racks, ski racks, etc.
2. Vehicle body vibration over time.
3. Driving vehicle in new "compass zone" (Ref. Quick Reference Card).

# TEMPERATURE TROUBLE-SHOOTING GUIDE

**Before attempting to trouble-shoot EC mirror temperature function, ensure the following:**

1. Mirror is manufactured by **Gentex Corporation** (the letters GNTX will be etched onto the back of the mirror and the compass display window will be on the mirror glass).
2. EC mirror harness must be fully plugged into EC mirror.
3. Vehicle ignition must be in the "ON" position.



**NOTE:**

1. Acceptable temperature accuracy is +/- 3 degrees Fahrenheit. Comparisons made to other temperature reporting methods (i.e., bank displays, local weather report, other means), are not a good indicator as to EC mirror temperature accuracy. Technologies other than those utilized by the EC mirror, are often used and differences do not denote a problem with the accuracy of the EC mirrors temperature reading.

**Generally, if the EC mirror is malfunctioning and a temperature is displayed, it will be significantly**

# HOMELINK® TROUBLE-SHOOTING GUIDE

**Before attempting to trouble-shoot EC mirror HomeLink® function, ensure the following:**

1. Mirror is manufactured by **Gentex Corporation** (the letters **GNTX** will be etched onto the back of the mirror and the compass display window will be in the mirror glass).
2. EC mirror harness must be fully plugged into EC mirror.
3. Vehicle ignition must be in the "OFF" position.

