

9. Return to the vehicle and firmly press, hold for 2 seconds and release the programmed HomeLink® button. **Fig. 5**
10. Repeat Step 9 a second time and possibly a third time (depending on brand of device).

**HomeLink® should now activate your rolling code equipped device.**

#### Gate Operator / Canadian Programming:

Canadian radio-frequency laws require transmitter signals to “time-out” or quit after several seconds of transmission – which may not be long enough for HomeLink® to pick up the signal during programming. Similar to this Canadian law, some U.S. gate operators are designed to “time-out” in the same manner.

If you live in Canada or you are having difficulties programming a gate operator by using the “Programming” procedures (regardless of where you live), replace “Programming HomeLink® step 4 with the following:

**NOTE:** If programming a garage door opener or gate operator, it is advised to unplug the device during the “cycling” process to prevent possible overheating.

4. Continue to press and hold the HomeLink® button while you press and release - every 2 seconds (“cycle”) your hand-held transmitter until the frequency signal has successfully been accepted by HomeLink®. (The indicator light will flash slowly and then rapidly.)

Proceed with “Programming” step 5 to complete.

**NOTE:** Programmed HomeLink® codes can be intentionally erased (when selling vehicle etc.) by holding the 2 outer buttons (as shown in Fig. 1) for 20 seconds until LED indicator begins to flash. Do not hold buttons for more than 30 seconds.

**If you have any questions or are having difficulty programming your HomeLink® buttons, please refer to [www.homelink.com](http://www.homelink.com) or call 1-800-355-3515.**

#### Cleaning the mirror:

When cleaning the mirror, use a paper towel or similar material dampened with glass cleaner. Do not spray glass cleaner directly onto the mirror as damage to internal circuitry may result.

#### Troubleshooting Guidelines:

1. **“C” or “CAL” is displayed in the display window**
  - a. Perform calibration procedure.
2. **Inaccurate compass direction**
  - a. Perform compass zone setting procedure and then calibration procedure
  - b. Vehicle magnetism may have changed.
    - Press and hold the “⊕” button or the “-N-” button (if mirror has) for 9 seconds until a “C” or “CAL” appears in the display window.
    - Perform calibration procedure.

**NOTE:** Installing items such as a ski rack, antenna, luggage rack or recent body repair can cause changes to the vehicle’s magnetic field. This may require that the compass be recalibrated by performing the recalibration procedure.

3. **The temperature display is reading significantly low**
  - a. The temperature display may have been changed to degrees Celsius. Refer to the section of this User Guide pertaining to the temperature feature to correct.
4. **The display window shows “SC” or “OC” instead of temperature**
  - a. These problems must be corrected at your authorized Dealer Service Center.

FCC: NZLCTHL3. IC: 4112A-NZLCTHL3

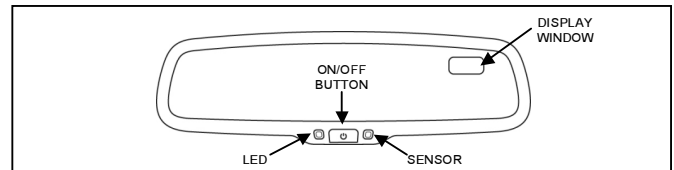


## Auto-Dimming Mirror User Guide

Congratulations! Your new Mazda is equipped with an Automatic-Dimming Mirror, manufactured by Gentex Corporation. During nighttime driving, this safety feature will automatically detect and eliminate dangerous rearview mirror glare.

Your new mirror may or may not have all of the features shown in this User Guide. Please refer only to the sections that pertain to the model mirror you have in your new vehicle.

### Auto-Dimming Mirror with Compass

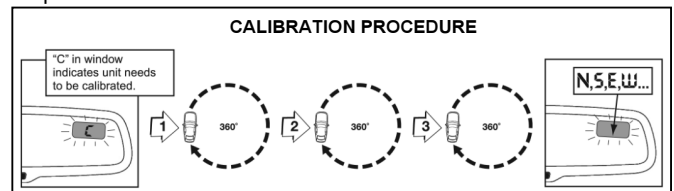


#### To Operate the Auto-Dimming Feature:

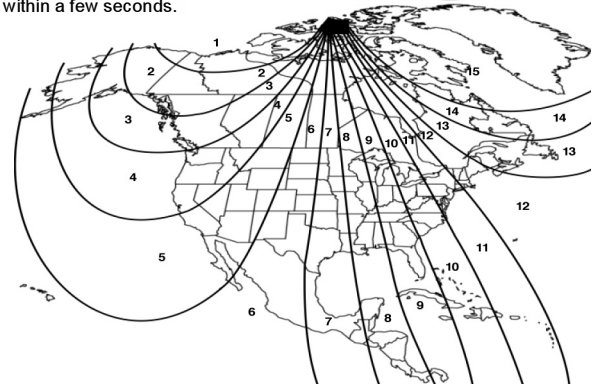
Push the “⊕” switch to turn the mirror on/off. The auto-dimming feature is enabled when the green LED indicator is on.

#### To Operate the Compass Feature:

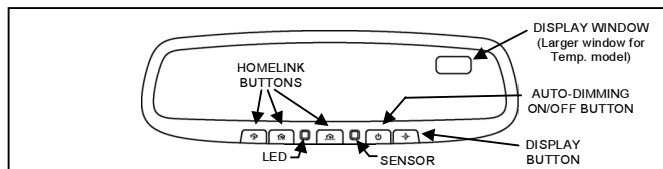
1. Push the display “⊕” switch. The vehicle’s directional heading will be displayed.
2. Pushing the “⊕” switch a second time will turn off the visual display.
3. If the display reads “C”, calibrate the compass by driving the vehicle in up to 3 complete circles at less than 5 MPH.



4. To adjust for compass variance:
  - a. Press the “⊕” button for more than 9 seconds, or until the current zone number appears in the display.
  - b. Find your current location and variance zone number on the zone map below.
  - c. Press the “⊕” button until the new zone number appears in the display. After you stop pressing the button, the display will show a compass heading within a few seconds.



# Auto-Dimming Mirror with Compass and HomeLink® and Auto-Dimming Mirror with Compass, HomeLink® and Temperature

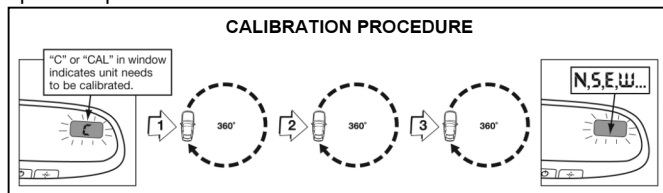


## To Operate the Auto-Dimming Feature:

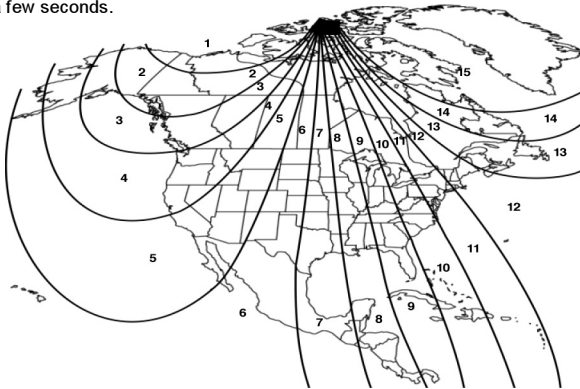
Push the "☉" switch to turn the mirror on/off. The auto-dimming feature is enabled when the green LED indicator is on.

## To Operate the Compass Feature:

1. Push the display "N" switch. The vehicle's directional heading will be displayed.
2. Pushing the "N" switch a second time will turn off the visual display.
3. If the display reads "C" or "CAL", calibrate the compass by driving the vehicle in up to 3 complete circles at less than 5 MPH.



4. To adjust for compass variance:
  - a. Press the "N" button for more than 9 seconds, or until the current zone number appears in the display.
  - b. Find your current location and variance zone number on the zone map below.
  - c. Press the "N" button until the new zone number appears in the display. After you stop pressing the button, the display will show a compass heading within a few seconds.



## To Operate the Temperature Feature:

1. Push the "N" switch. The vehicle's directional heading and outside temperature will be displayed.
2. Pushing the "N" switch a second time will turn off the visual display.
3. The temperature display can be changed to Celsius by depressing the "N" switch for 3 seconds, until a "C" appears by itself in the display window. Pushing the "N" switch again will toggle the display between Celsius and Fahrenheit. Five seconds of no switch activity returns the display to its normal directional and temperature reading.

HomeLink® and the HomeLink® house are registered trademarks of Johnson Controls, Inc.

## To Operate the HomeLink® Feature:

Please refer to the programming instructions outlined in this User Guide or:

- a. visit the HomeLink® website at [www.homelink.com](http://www.homelink.com)
- b. call the HomeLink® customer support line at 1-800-355-3515

## HomeLink® Programming Instructions:

**WARNING!** Before programming HomeLink® to a garage door opener or gate operator, make sure that people and objects are out of the way of the device to prevent potential harm or damage. When programming a garage door opener, it is advised to park outside of the garage. Do not use HomeLink® with any garage door opener that lacks safety stop and reverse features as required by U.S. federal safety standards (this includes any garage door opener model manufactured before April 1, 1982). A garage door that cannot detect an object – signaling the door to stop and reverse – does not meet current U.S. federal safety standards. For more information, contact HomeLink® at [www.homelink.com](http://www.homelink.com) or by calling 1-800-355-3515.

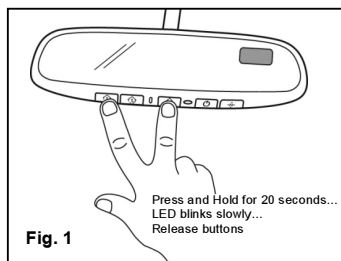


Fig. 1

1. To begin, press and hold the 2 outer HomeLink® buttons (to clear memory) until the indicator light (LED) blinks slowly (approximately 20 seconds). Fig. 1

2. Release both buttons.

**NOTE:** Do not hold the buttons for longer than 30 seconds. Do not repeat this step when programming additional devices to remaining buttons.

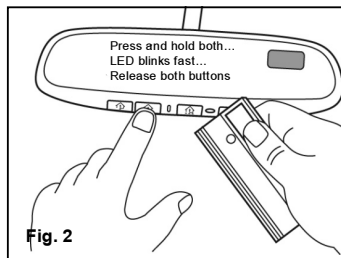


Fig. 2

3. Position the end of the hand-held transmitter 1-3 inches away from the HomeLink® button you wish to program while keeping the the indicator light in view.

4. Simultaneously press and hold both the chosen HomeLink® and hand-held transmitter buttons. Fig. 2

**Do not release the buttons until step 5 has been completed.**

**NOTE:** Some gate operator and garage door openers may require you to replace this Programming step 4 with procedures noted in the "Gate Operator / Canadian Programming" section.

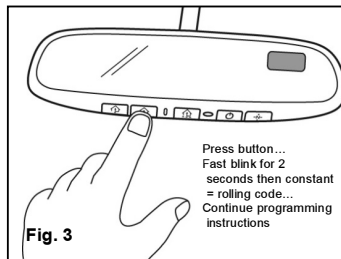


Fig. 3

5. After the HomeLink® indicator light changes from a slow to a rapidly blinking light, release both the HomeLink® and hand-held transmitter buttons.

6. Press and hold the just-trained HomeLink® button and observe the indicator light.

If the indicator light blinks rapidly for 2 seconds and then turns to a constant light, the device being programmed utilizes rolling code and programming is not complete until the following steps are completed. Fig. 3

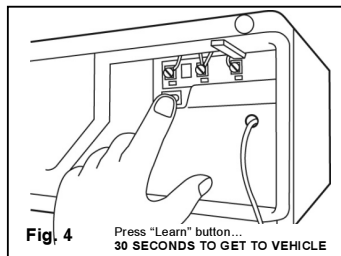


Fig. 4

7. On the garage door opener receiver (motor-head unit) locate the "learn" or "smart" button. This can usually be found where the hanging antenna wire is attached to the motor-head unit.

8. Firmly press and release the "learn" or "smart" button. Fig. 4

**NOTE:** You have 30 seconds to initiate step 9.