

Service Information

Mazda Motor Europe GmbH
 Product Support Team
 Hitdorfer Str. 73
 Leverkusen 51371
 Germany



Category T	Repair Guidance	Ref. No. MME/R001/06	Page 1 of 3
Coverage <input type="checkbox"/> Distributor only <input checked="" type="checkbox"/> Please inform your dealers		Date Issued May 23, 2006	
Please convey this information to your <input type="checkbox"/> Director <input type="checkbox"/> General Manager <input checked="" type="checkbox"/> Warranty Dept. <input checked="" type="checkbox"/> Parts Dept. <input checked="" type="checkbox"/> Training Dept. <input checked="" type="checkbox"/> Field Rep.		Date Revised	
Applicable Model RX-8 (SE)		Applicable Countries or Specifications Europe	

Subject: Illuminated Shift Knob Removal– Service Tip

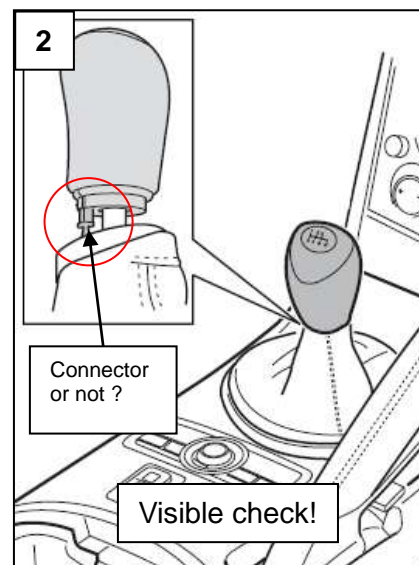
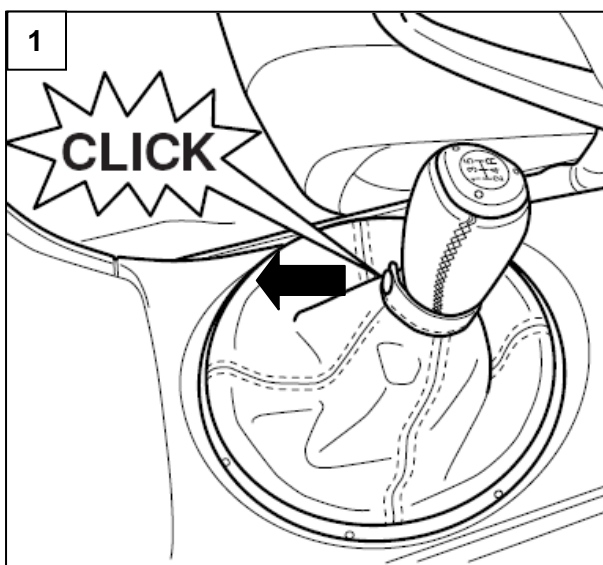
DESCRIPTION

When any repair requires removal of the shift knob, check first whether an illuminated accessory version is installed or not.

To do this just turn headlight switch to on position and check if gear shift pattern on top of shift knob is illuminated or not.

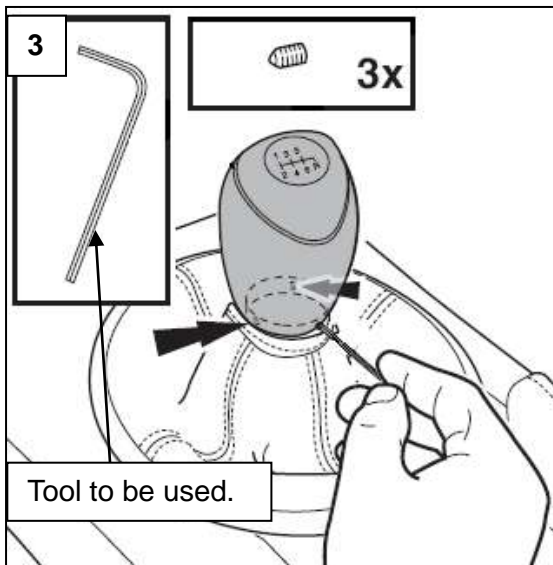
If not illuminated just continue your work according to standard procedure shown in workshop manual.

If illuminated version is installed, disconnect cable harness before continue with standard work! This is mandatory to prevent damage to cable harness. Go ahead according following description.



Open button from leather boot and check cable connection. If connected by connector just disconnect and continue with step 3. In case the cable goes directly to the inside of shift knob without separate connector than follow step 4 to 7.

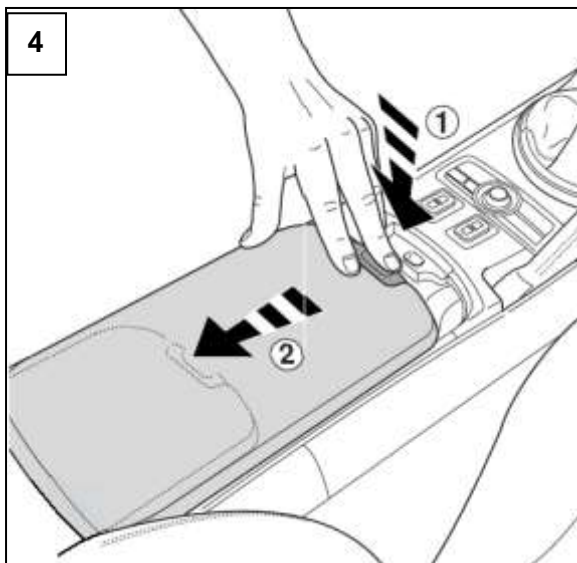
With connector follow step 3:



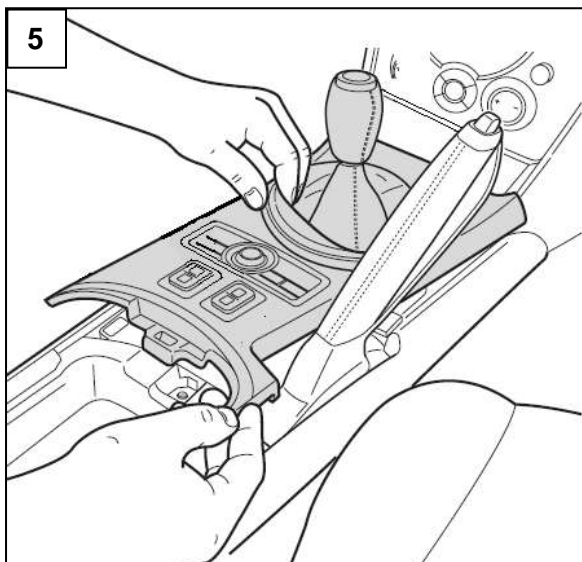
- Disconnect battery ground terminal.
- Disconnect connector on shift knob.
- Remove all three hexagon screws.
- Remove shift knob by turning anticlockwise.

Assembly in opposite way. Make sure that shift knob is fixed in proper way and can't be rotated anymore before handing over to customer.

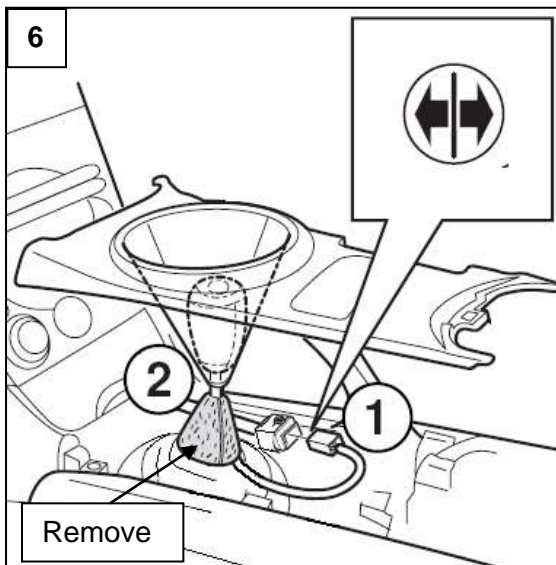
Without connector follow steps 4 to 7:



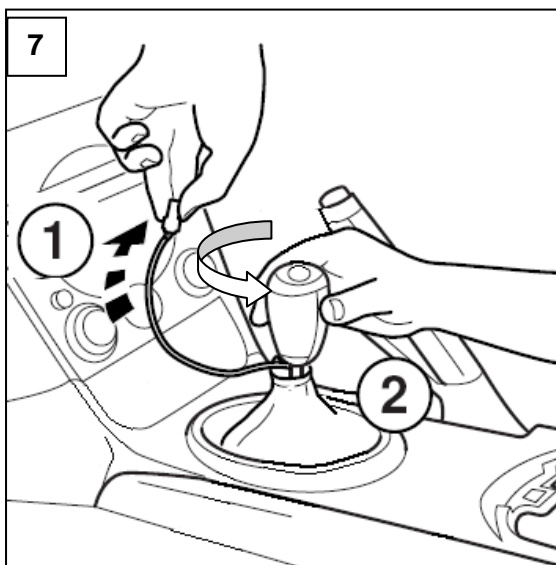
- Disconnect battery ground terminal.
- Open lid in centre console.



- Lift up gear leaver surrounding to obtain access to shift knob harness.



- Disconnect connector of shift knob harness.
- Remove isolation cover placed around gear shift lever.



- Pull up cable harness out of leather boot.
- Remove shift knob by turning carefully shift knob and cable harness together anticlockwise.

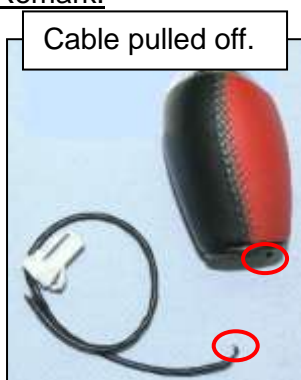
Assembling in opposite way. Make sure that shift knob is fixed in proper way and can't be rotated anymore before handing over to customer.

Part Information:

Part Number	Part Name
FE15 V8 170* **	Illuminated shift knob
FE16 V8 170* **	Illuminated shift knob

* Suffix A,B or no suffix for parts level. ** Colour code.

Remark:



In case of not following above mentioned description the harness will be pulled off and can't be repaired anymore.

Oliver Fischer
Manager
Customer Service / Product Support
Mazda Motor Europe GmbH