

© 2006 Mazda Motor of America, Inc.

Subject: AIRBAG (SAS UNIT) REPLACEMENT CAUTION - DTCs B1342 / B2477	Bulletin No: 08-002/06
	Last Issued: 07/12/2006

APPLICABLE MODEL(S)/VINS

- 2004 - 2006 RX-8
- 2004 - 2006 MPV
- 2006 Mazdaspeed6

DESCRIPTION

If the SAS unit is not configured during replacement, it will store a B1342 and B2477 DTC. If the original SAS unit is available, retrieve the data using PDS/IDS in the usual manner, then overwrite it in the new SAS unit.

If the data cannot be retrieved from the original SAS unit due to an accident, or the original SAS unit is no longer available, the **As-Built Data** will need to be obtained and manually entered.

When a new SAS unit is installed and PDS/IDS is connected, the As-Built Data input screen would normally appear. However, the As-Built Data input screen does not appear when working with the SAS unit part numbers below.

NOTE: The SAS unit part numbers listed below are for reference only, DO NOT order any parts. This Service Bulletin does not require any further parts replacement beyond the original repair.

Model	SAS Unit
RX-8	FE87-57-K30, FE01-57-K30*
MPV	LE43-57-K30, LE44-57-K30
Mazdaspeed6	GP9A-57-K30A

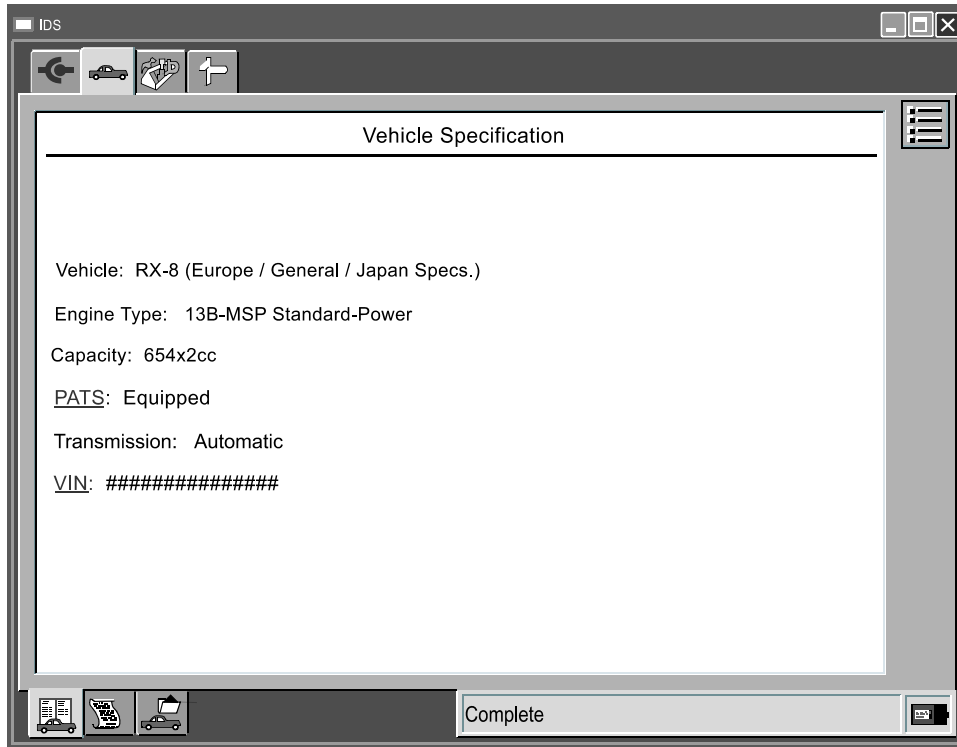
Use the following repair procedure to access the As-Built Data input screens.

CONSUMER NOTICE: The information and instructions in this bulletin are intended for use by skilled technicians. Mazda technicians utilize the proper tools/equipment and take training to correctly and safely maintain Mazda vehicles. These instructions should not be performed by "do-it-yourselfers." Customers should not assume this bulletin applies to their vehicle or that their vehicle will develop the described concern. To determine if the information applies, customers should contact their nearest authorized Mazda dealership. Mazda North American Operations reserves the right to alter the specifications and contents of this bulletin without obligation or advance notice. All rights reserved. No part of this bulletin may be reproduced in any form or by any means, electronic or mechanical---including photocopying and recording and the use of any kind of information storage and retrieval system ---without permission in writing.

REPAIR PROCEDURE

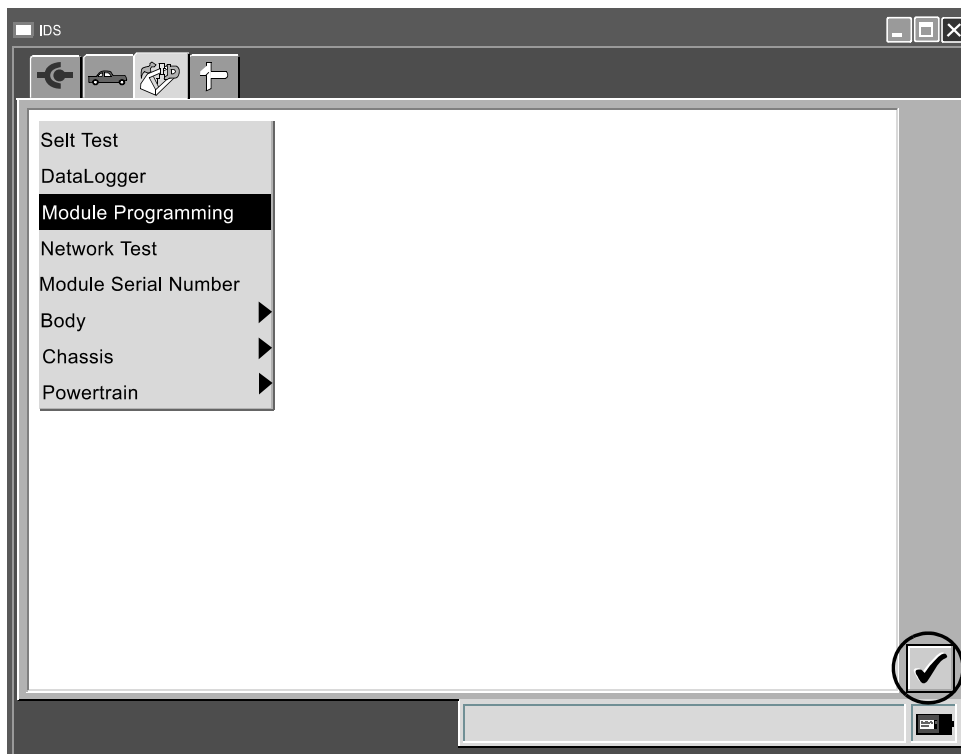
1. Establish communication between PCM and PDS/IDS **without the SAS unit in vehicle.**

NOTE: DO NOT install the original or new SAS unit into the vehicle at this time.



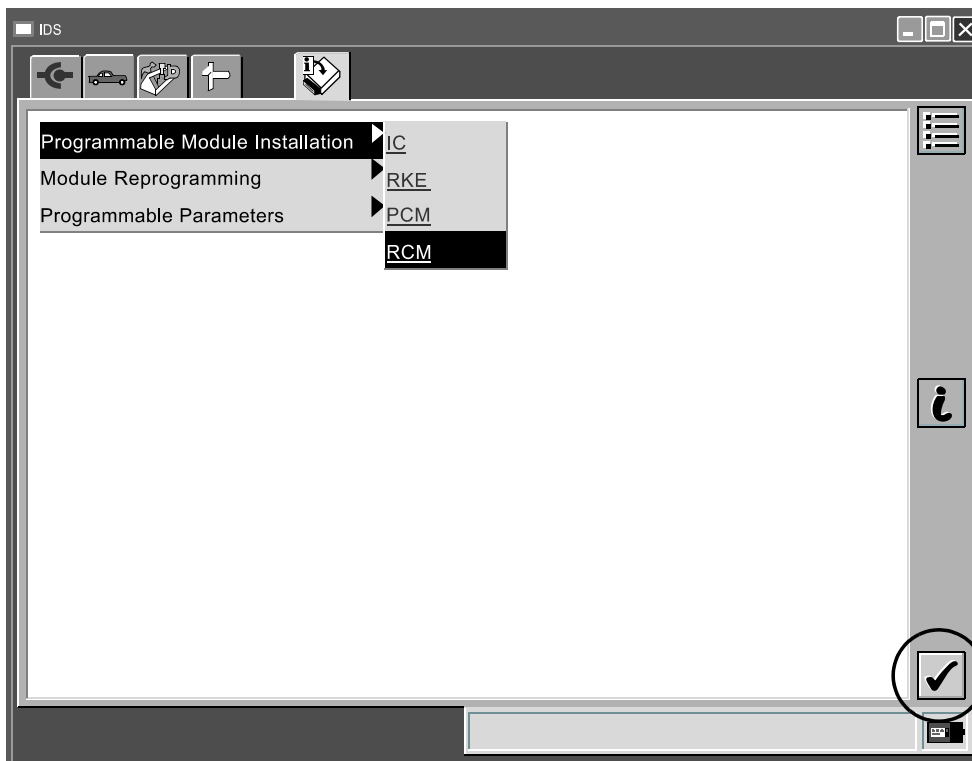
1541a

2. Select Tool Box > Module Programming; press tick.



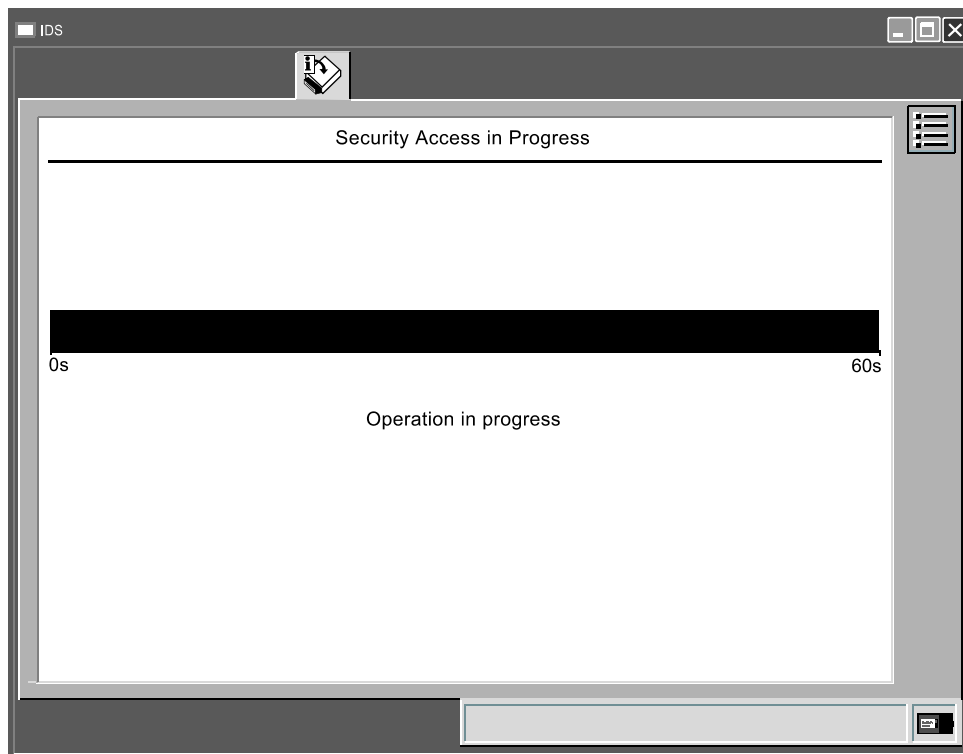
1541b

3. Select Programmable Module Installation>RCM; press tick.



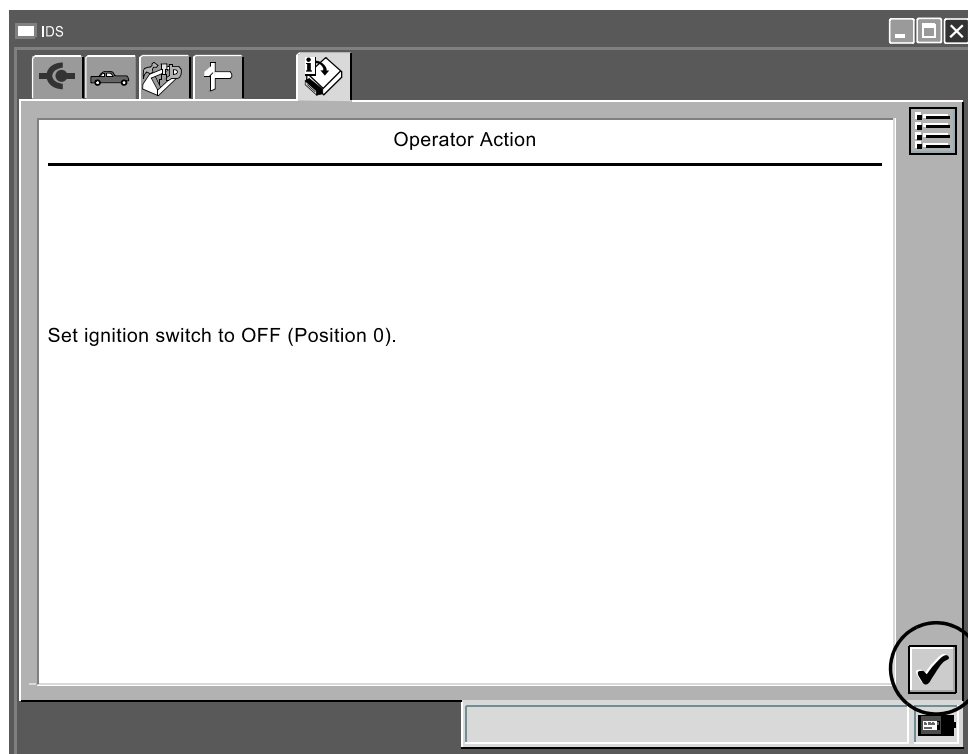
1541c

4. The Security Access in Progress screen appears.



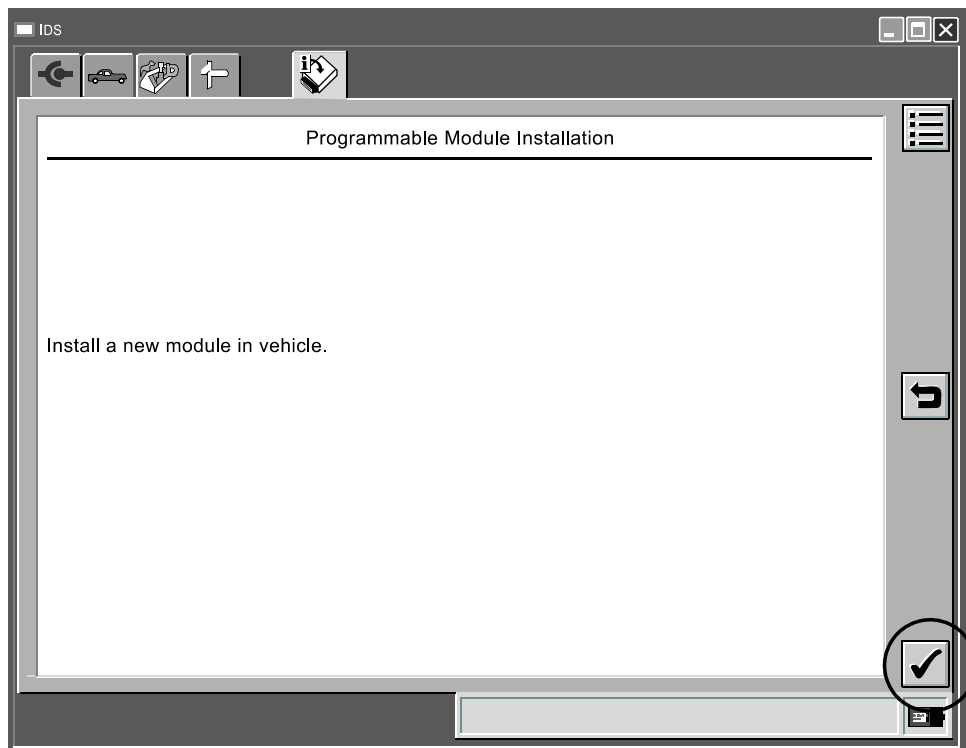
1541j

5. Turn ignition to LOCK (OFF) position; press tick.



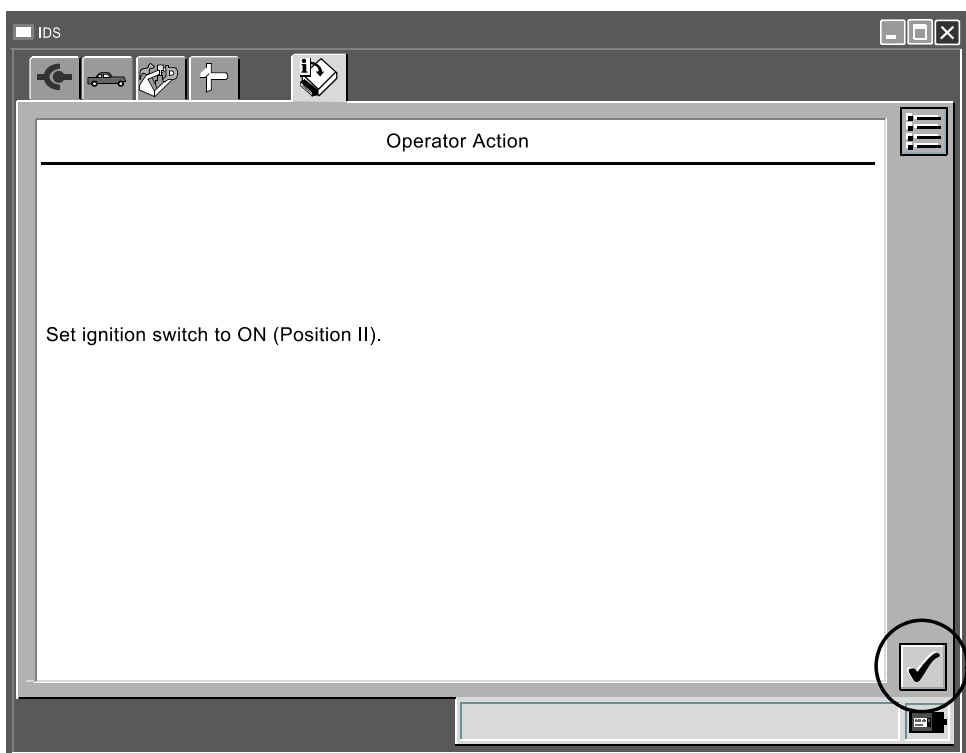
1541d

6. Install new SAS unit; press tick.



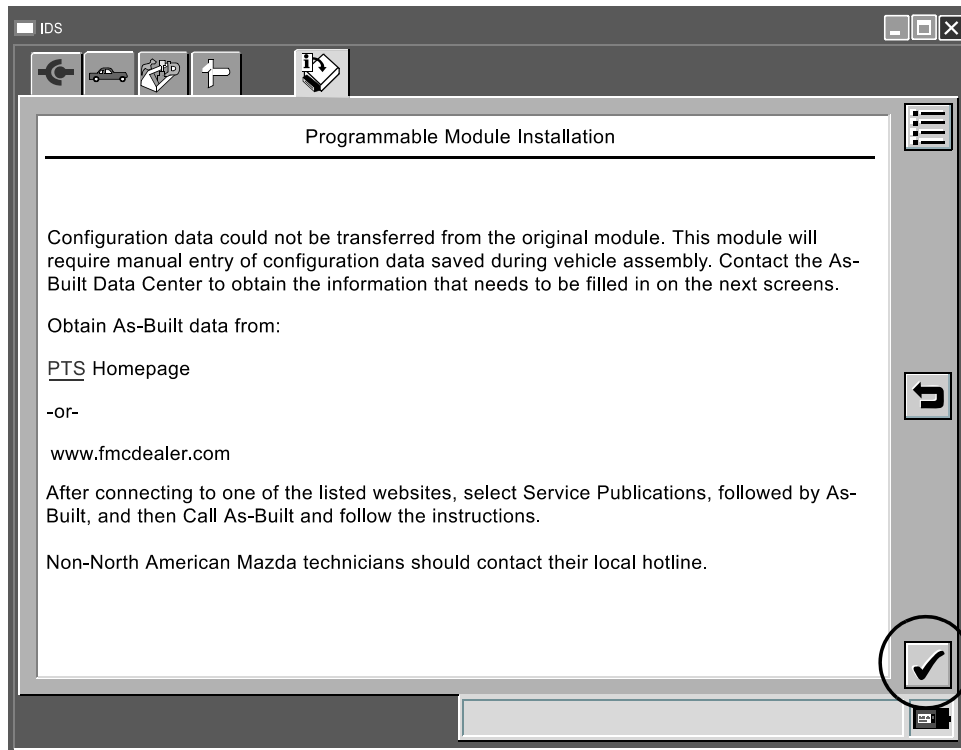
1541e

7. Turn ignition to ON position; press tick.

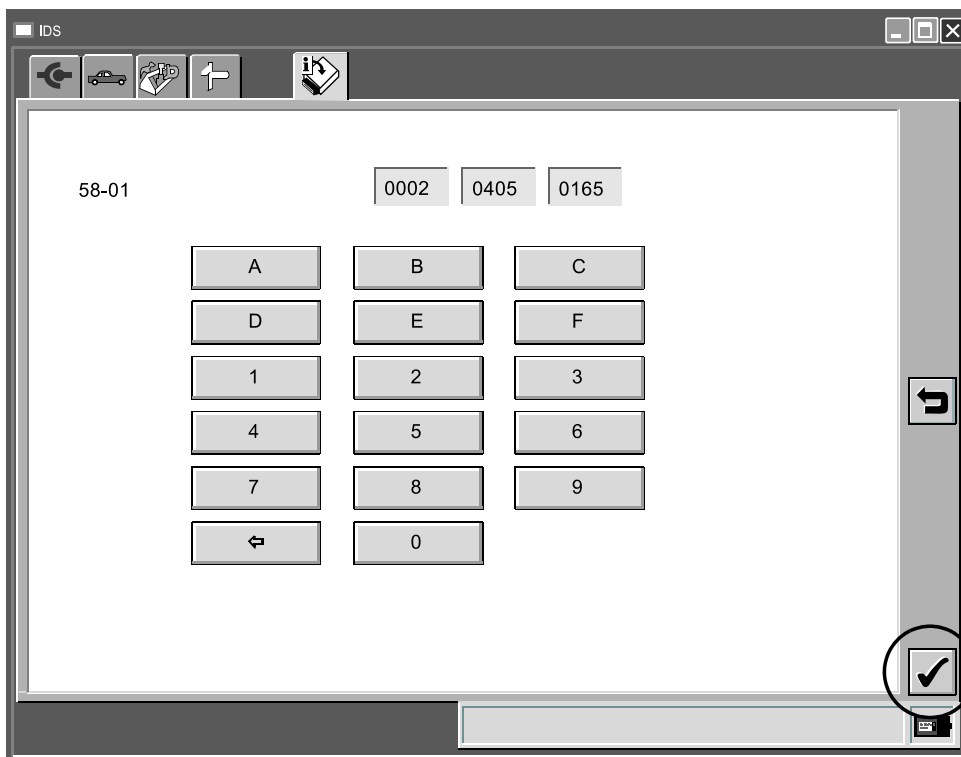


1541f

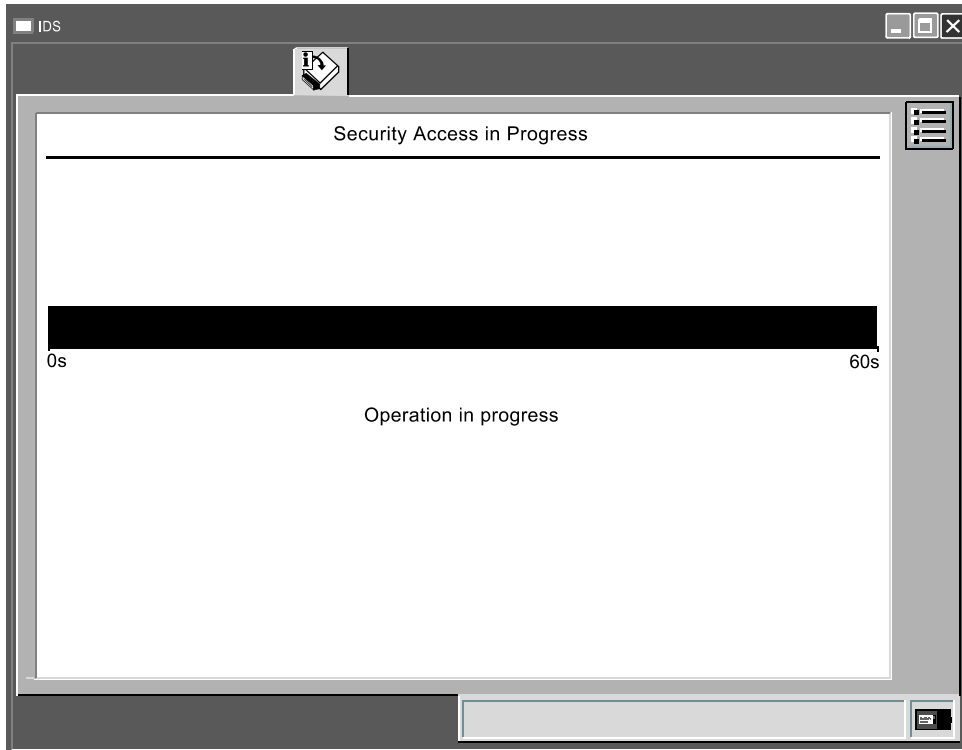
8. When this screen appears, press tick.



9. Input hex values of As-Built Data sheet in each area from "58-01" through "58-10"; press tick.

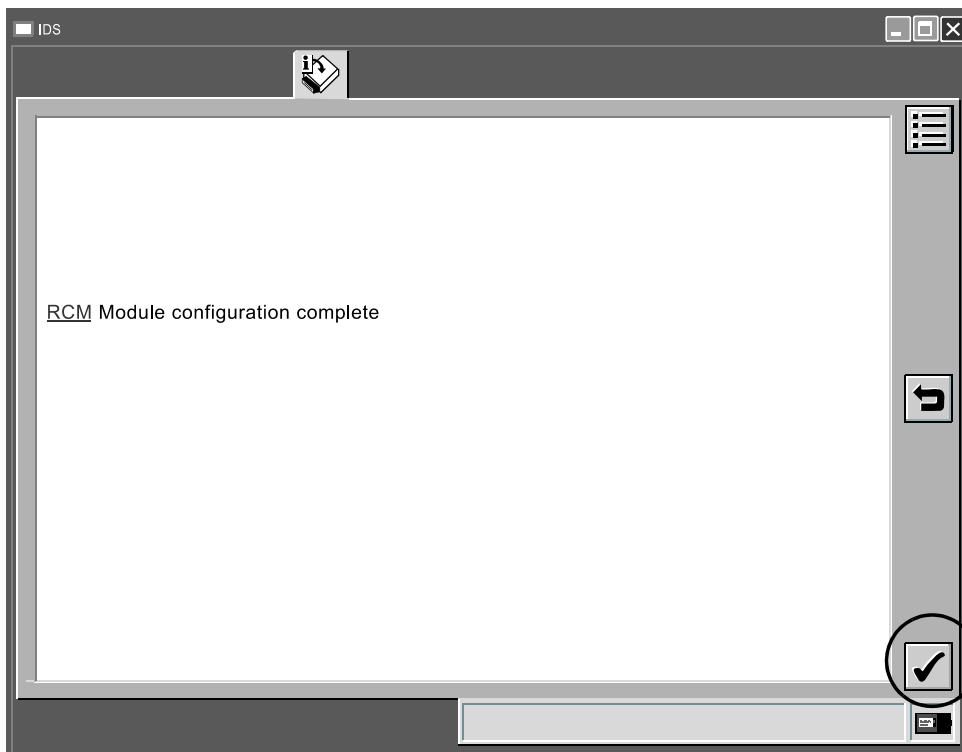


10. The Security Access in Progress screen appears again.



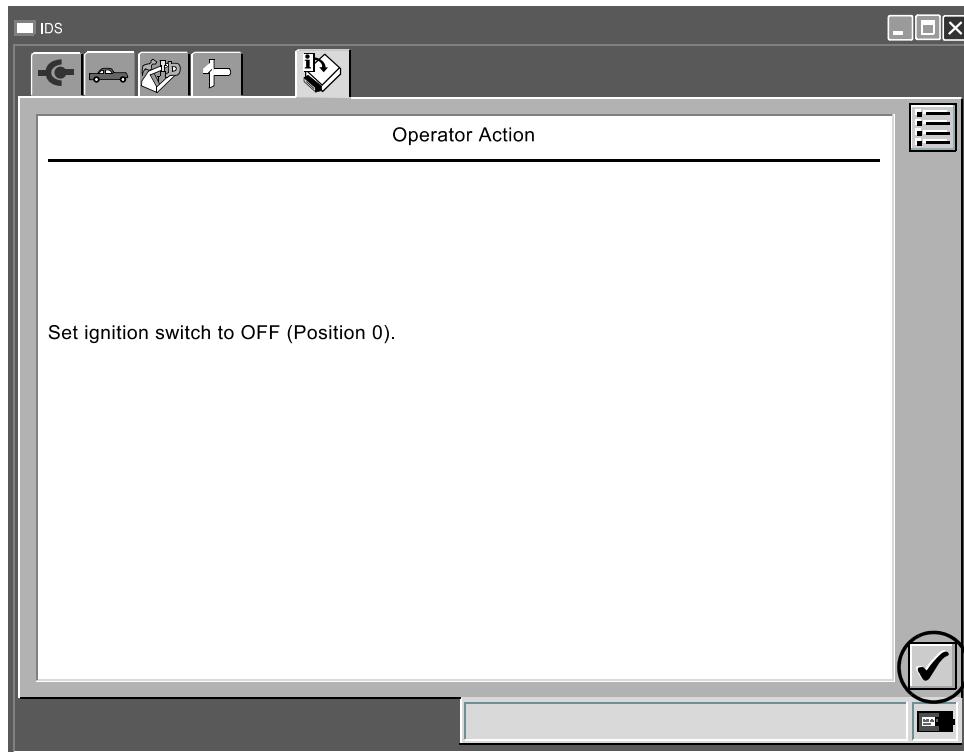
1541j

11. RCM Module configuration complete; press tick.



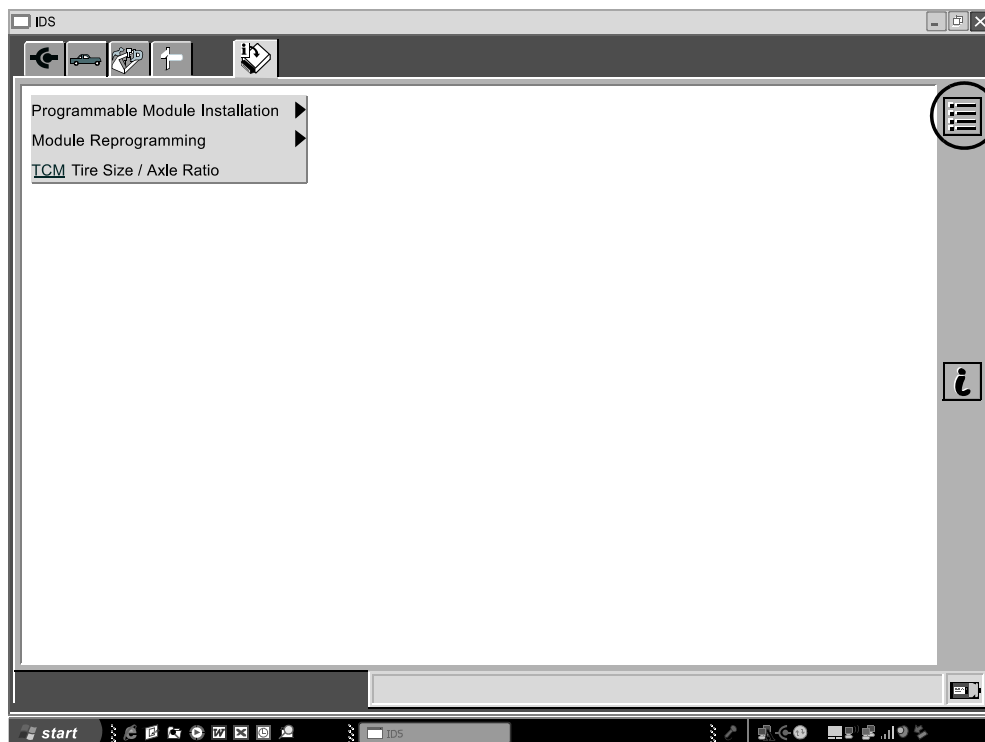
1541k

12. Press tick and turn ignition to OFF position.



15411

13. Click or press Menu icon and exit Module Reprogramming.



1541n