

Subject: RETRACTABLE KEYS - SERVICE TIPS	Bulletin No: 09-041/04
	Last Issued: 12/8/2004

APPLICABLE MODEL(S)/VINS

2005 Miata (With Remote Keyless Entry)

2005 MPV

2005 RX-8

DESCRIPTION

A redesigned style key/keyless entry transmitter has been introduced on some 2005 models. This Service Tip was created to identify keys/transmitters for the various models. The redesigned keys/transmitters look similar in many ways, but cannot be interchanged between vehicles or with any other models.

CAUTION: Although the keys appear identical between models, they contain different transponders for the anti-theft ignition. If the incorrect part number key is obtained from the parts dept., key programming will not be successful & engine will not start! It is suggested to store the key blanks in their original package with part number until use, to avoid mixing stock.

NOTE: Transmitters will only accept a 1/2" diameter key ring. Larger diameter key ring may not fit unique attachment point of transmitter.

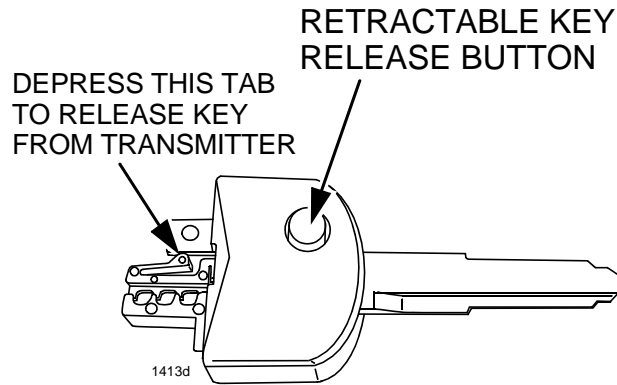
REPAIR PROCEDURE

RETRACTABLE KEYS

For applications and part numbers of retractable keys, see PART(S) INFORMATION.

- RX8 models use a PATS coded access antitheft ignition system. The RX-8 key is not compatible with the Miata or MPV.
- Miata models use an Immobilizer anti-theft ignition system. The Miata key is not compatible with RX8 or MPV.
- MPV models do not have an anti-theft ignition system & the key does not contain a transponder. The MPV key is not compatible with the Miata or RX8.

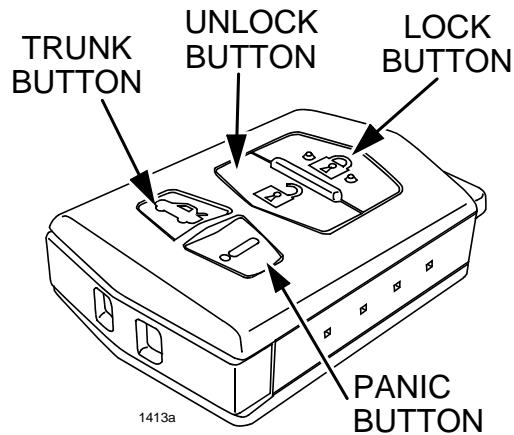
To separate the key from the transmitter, use a small, flat bladed screwdriver, to press the release tab inwards while pulling apart key & transmitter.



TRANSMITTERS

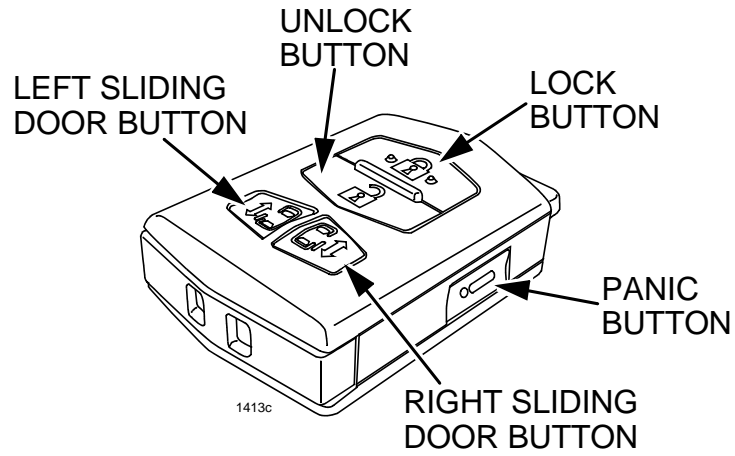
The transmitters vary depending on application. Miata and RX-8 transmitters are duplicate in appearance, but cannot be interchanged. MPV has 2 different transmitters depending on vehicle options. For applications and part numbers of transmitters, see PART(S) INFORMATION.

- Miata (with remote keyless entry) and RX-8 transmitter is shown below.

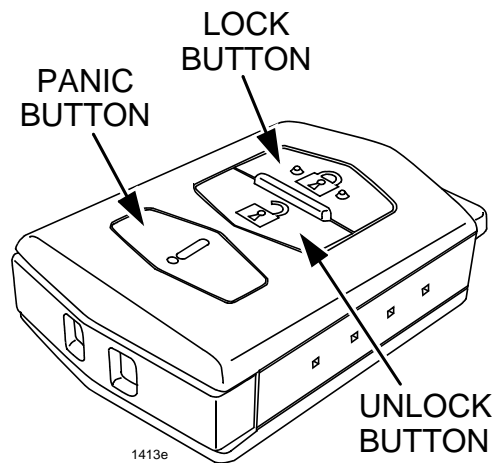


WITH TRUNK RELEASE

- Both MPV transmitters are shown below.



WITH DUAL POWER SLIDING DOORS



W/O DUAL POWER SLIDING DOORS

PART(S) INFORMATION

Part Number	Description	Qty.	Notes
G2YA-76-2GX	Retractable Key Blank	1	RX-8
FE04-67-5RY	Transmitter	1	RX-8
NEY5-76-2GX	Retractable Key Blank	1	MX-5 Miata
NE01-67-5RY	Transmitter	1	MX-5 Miata
G2YA-76-201	Retractable Key Blank	1	MPV
LF22-67-5RY	Transmitter	1	MPV (W/Pwr Sliding Doors)
LF20-67-5RY	Transmitter	1	MPV (W/O Pwr Sliding Doors)