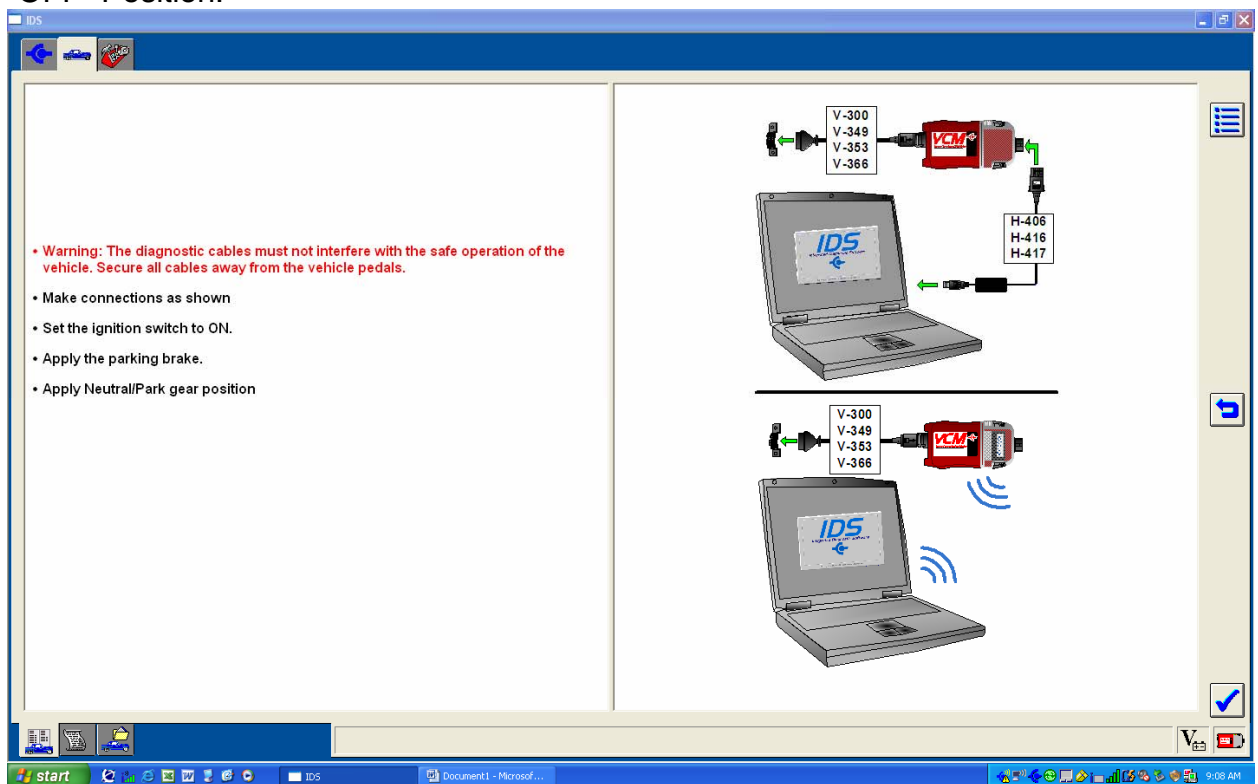
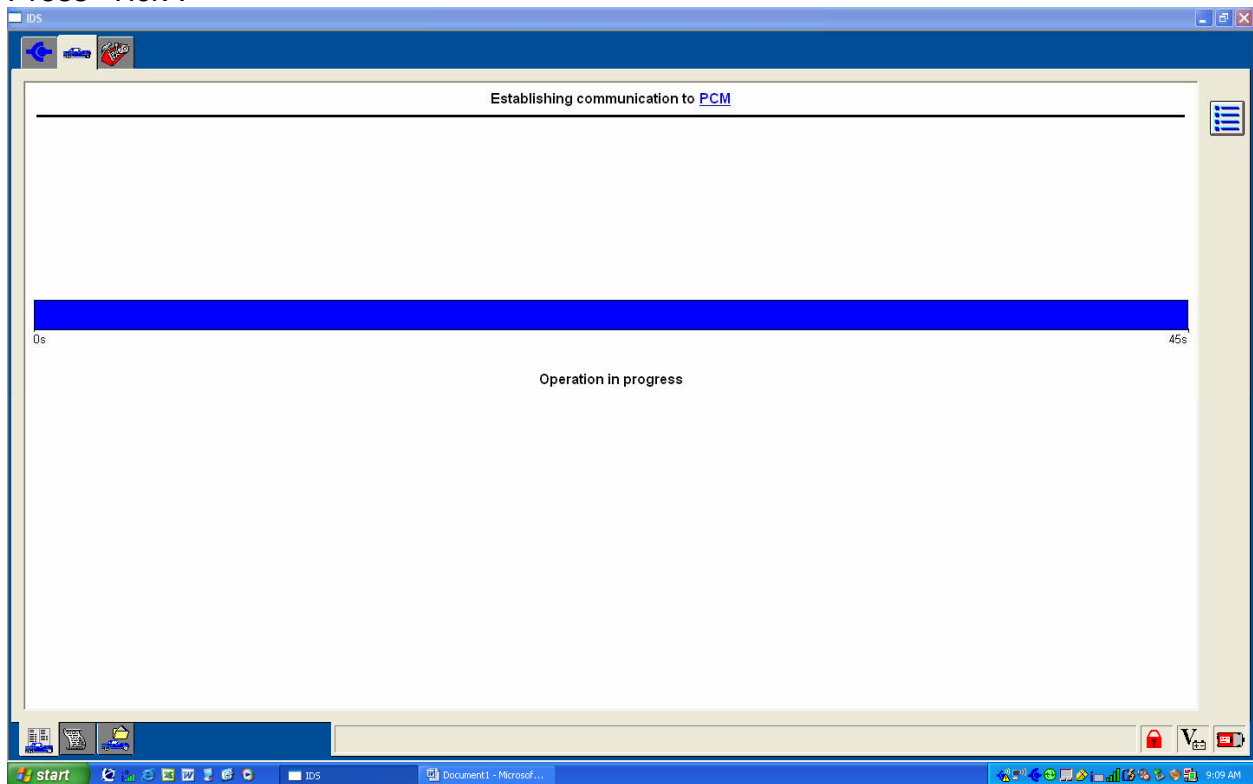


Label1

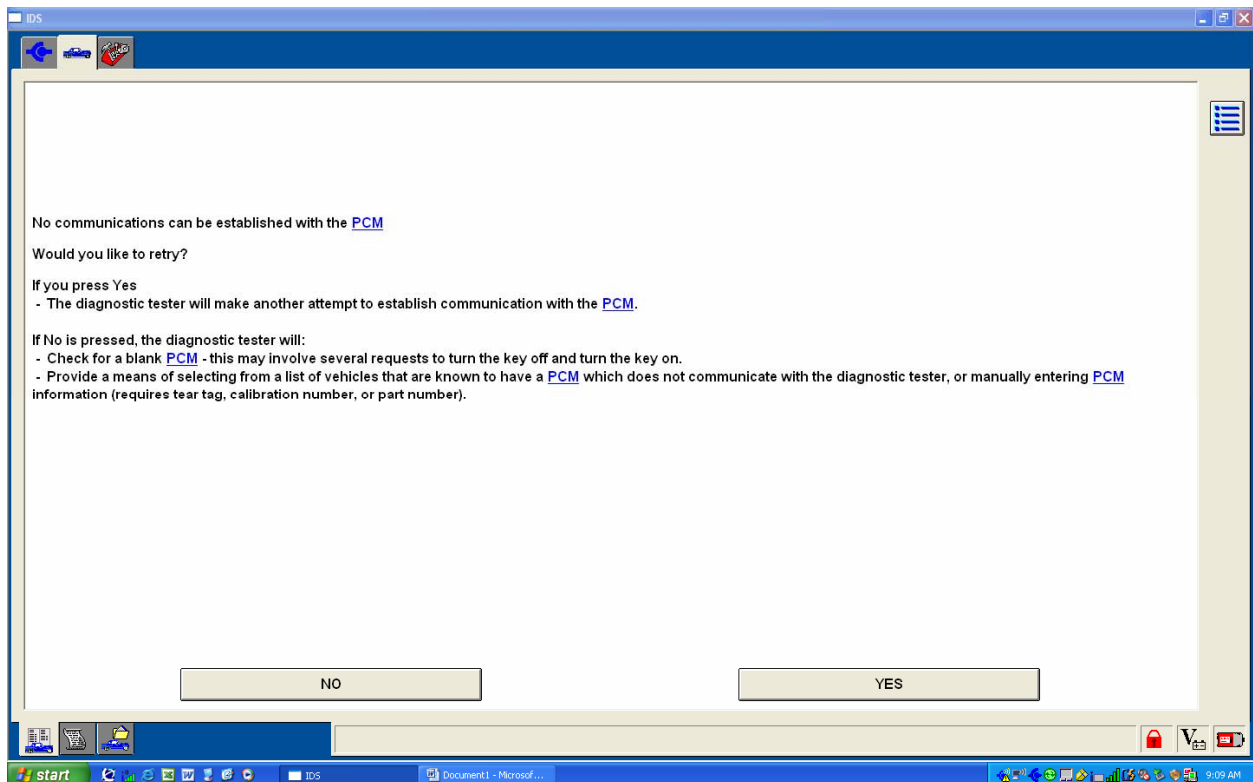
Select "Start New Session" "All Others" Press "Tick". NOTE: Leave ignition switch in the "OFF" Position.



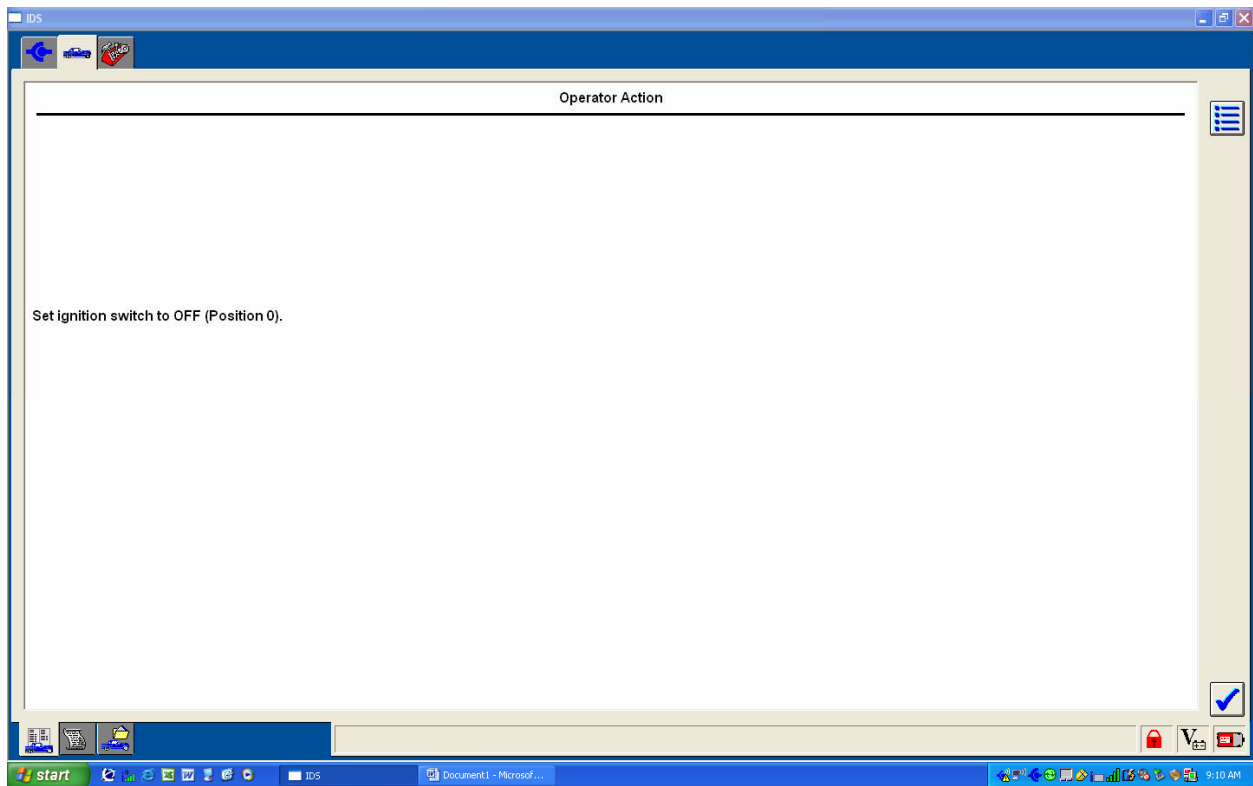
Press "Tick".



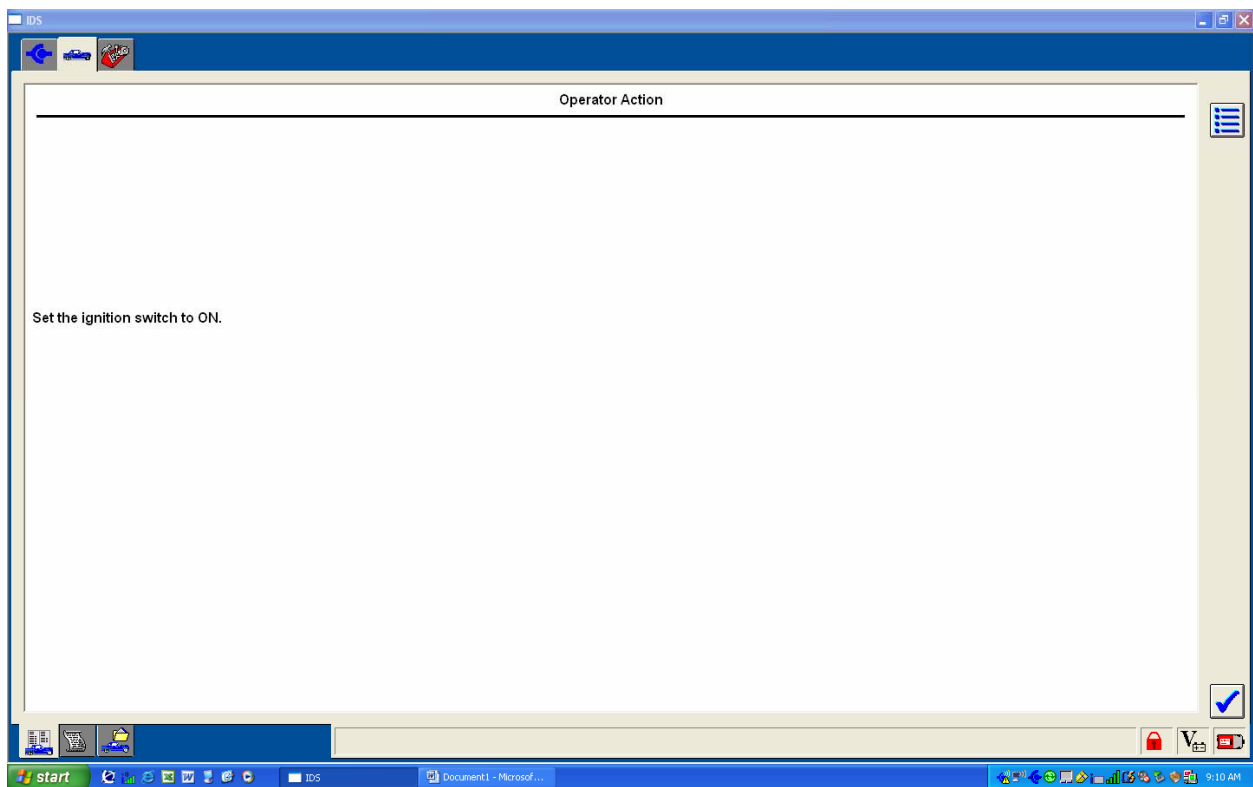
Progress Bar will go across and sit idle for approx. 2 min.



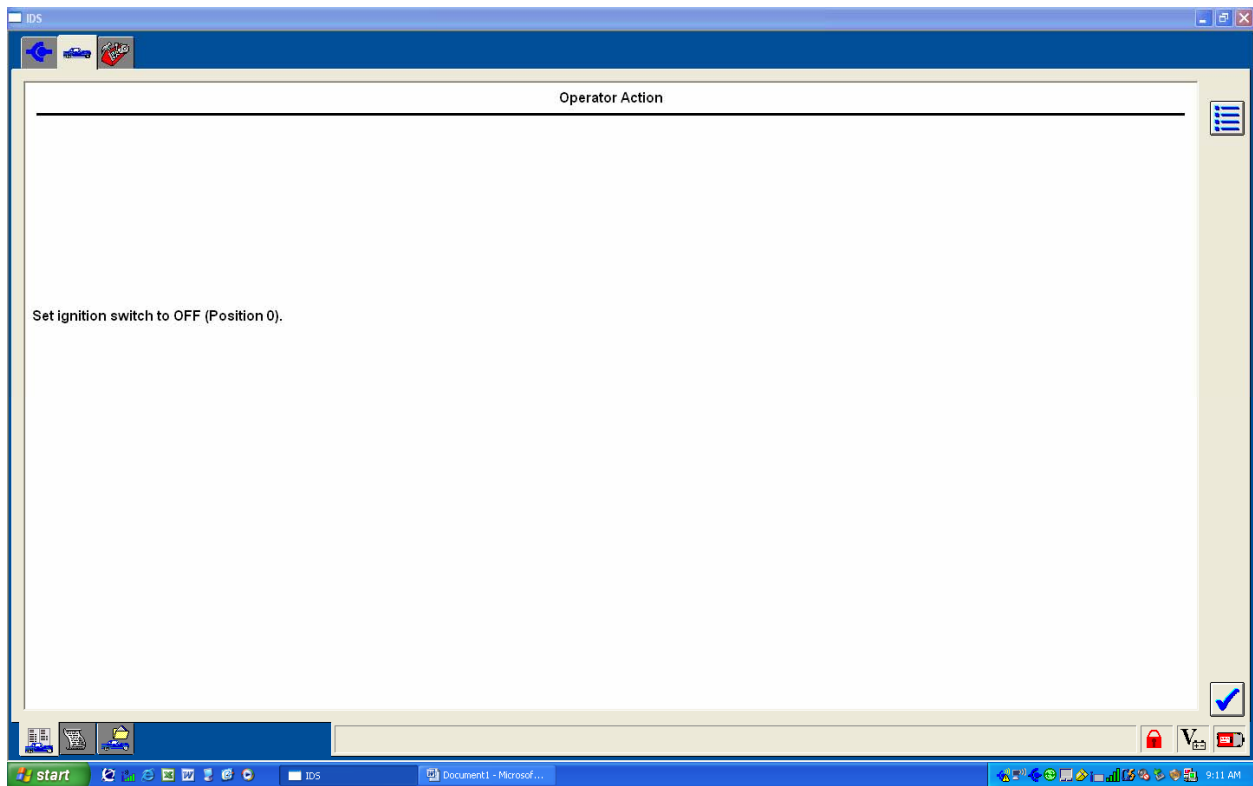
Select "NO".



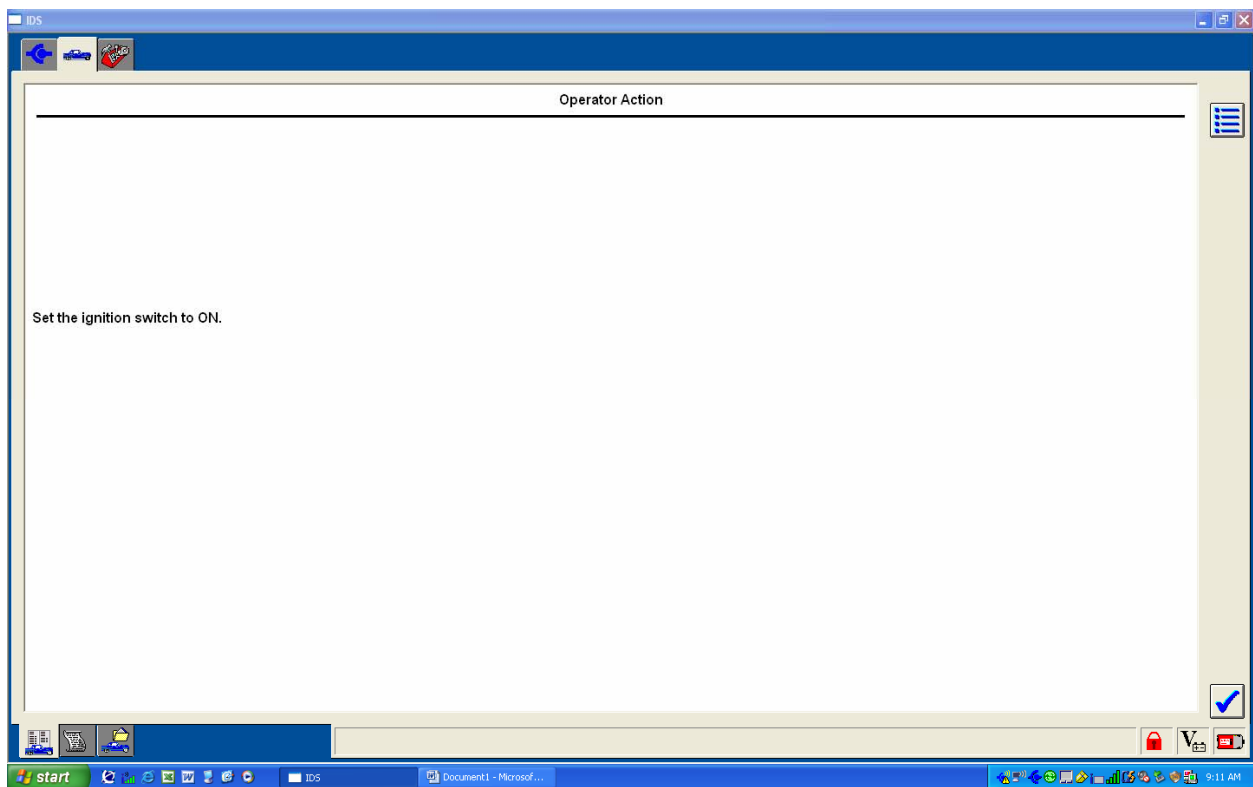
Screen shows “set ignition switch to off position”, it is already off. Press tick.



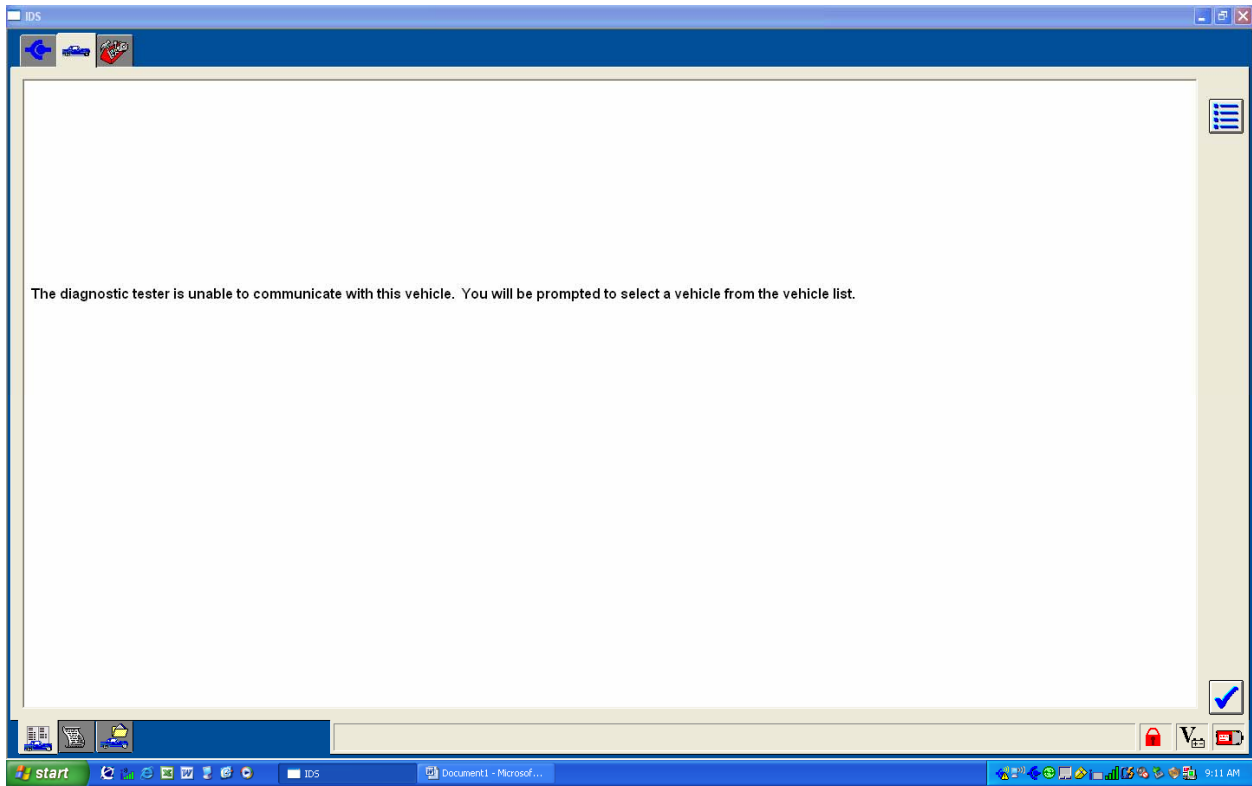
Screen shows “set ignition switch to on position”, **do not** turn on just press tick.



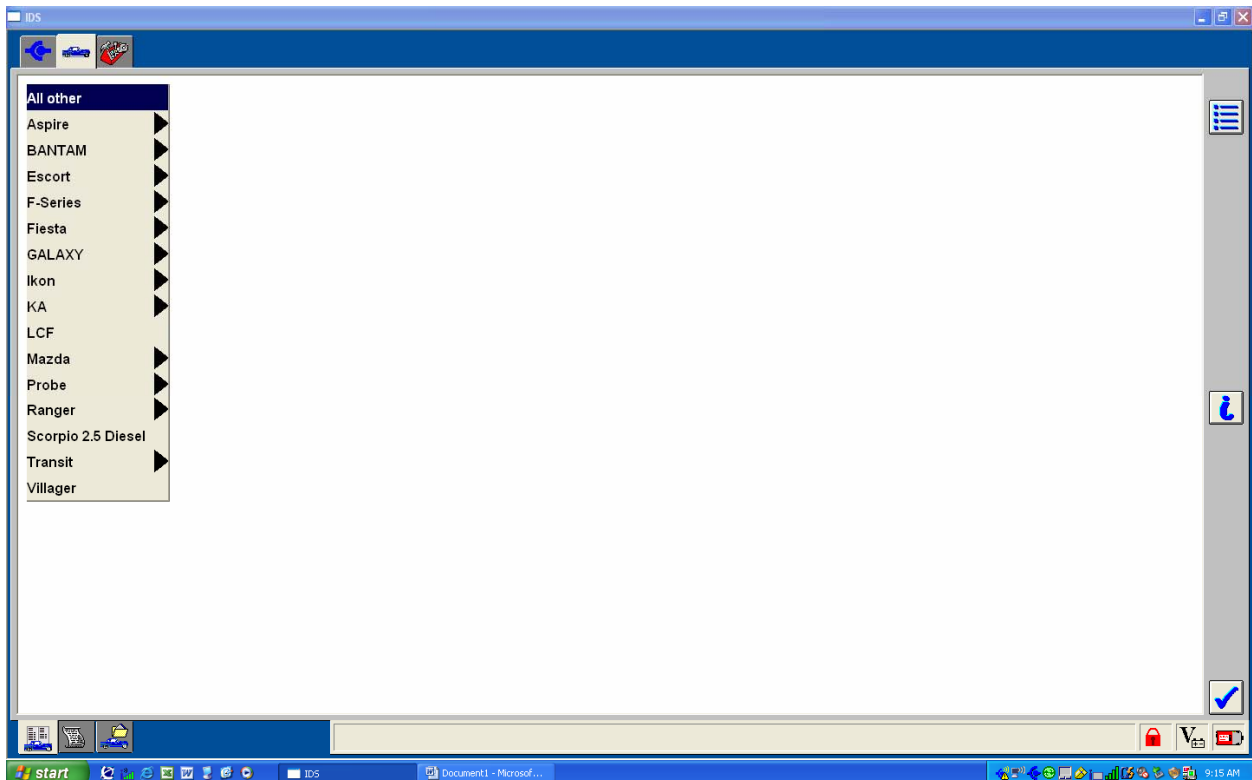
Screen shows “set ignition switch to off position”, press tick.



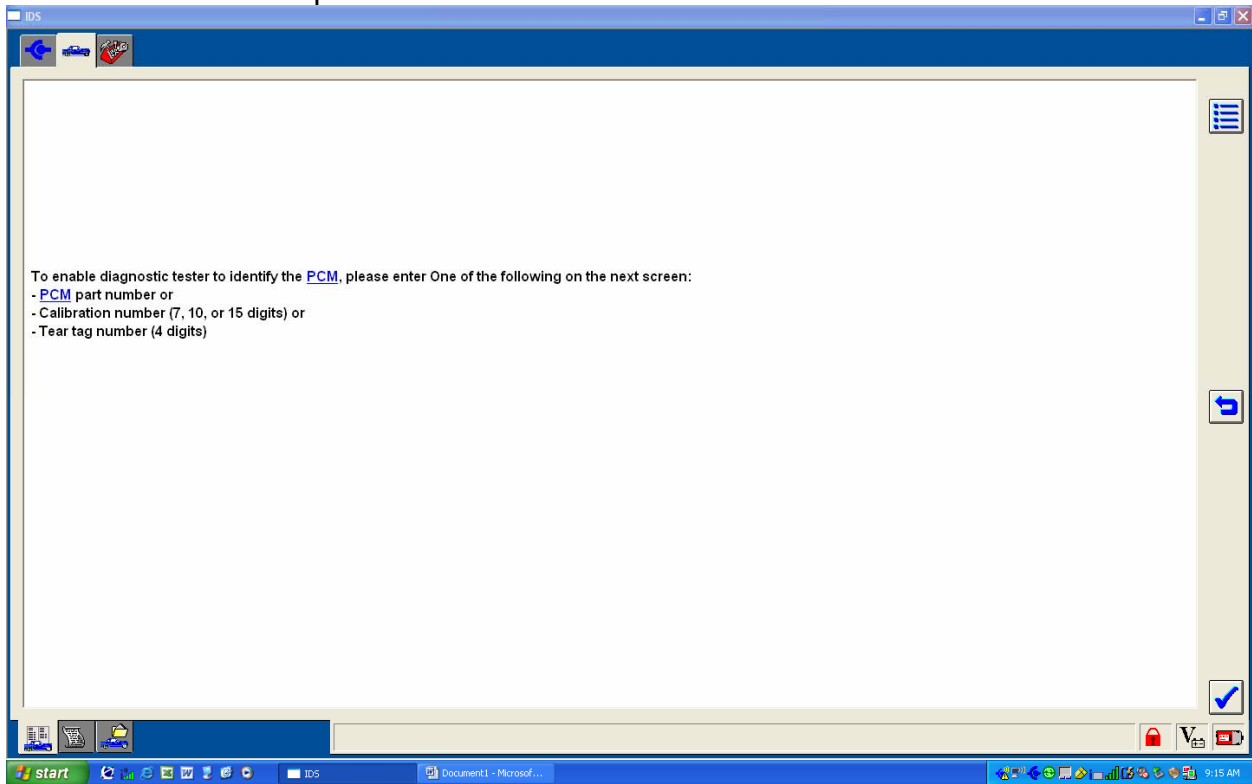
Screen shows “set ignition switch to on position”, **do not** turn on just press tick.



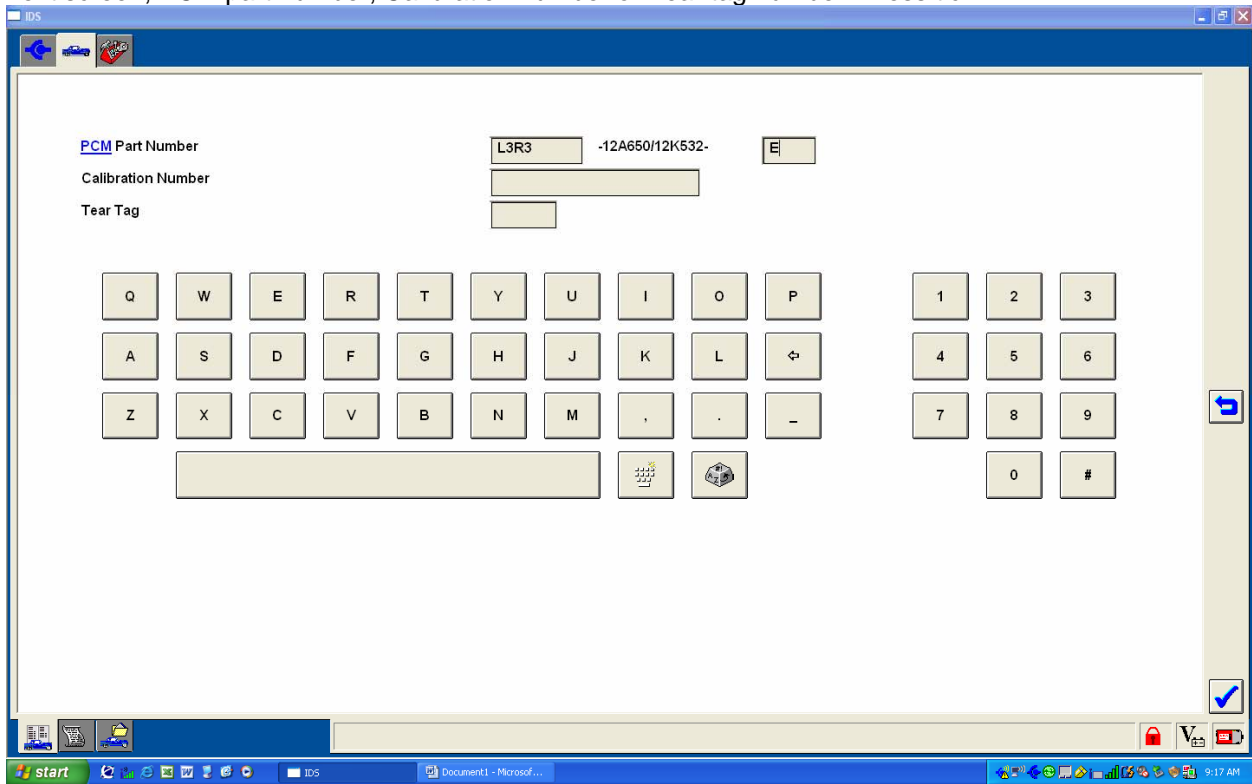
Screen shows "The diagnostic tester is unable to communicate with this vehicle. You will be prompted to select a vehicle from the vehicle list". Press tick.



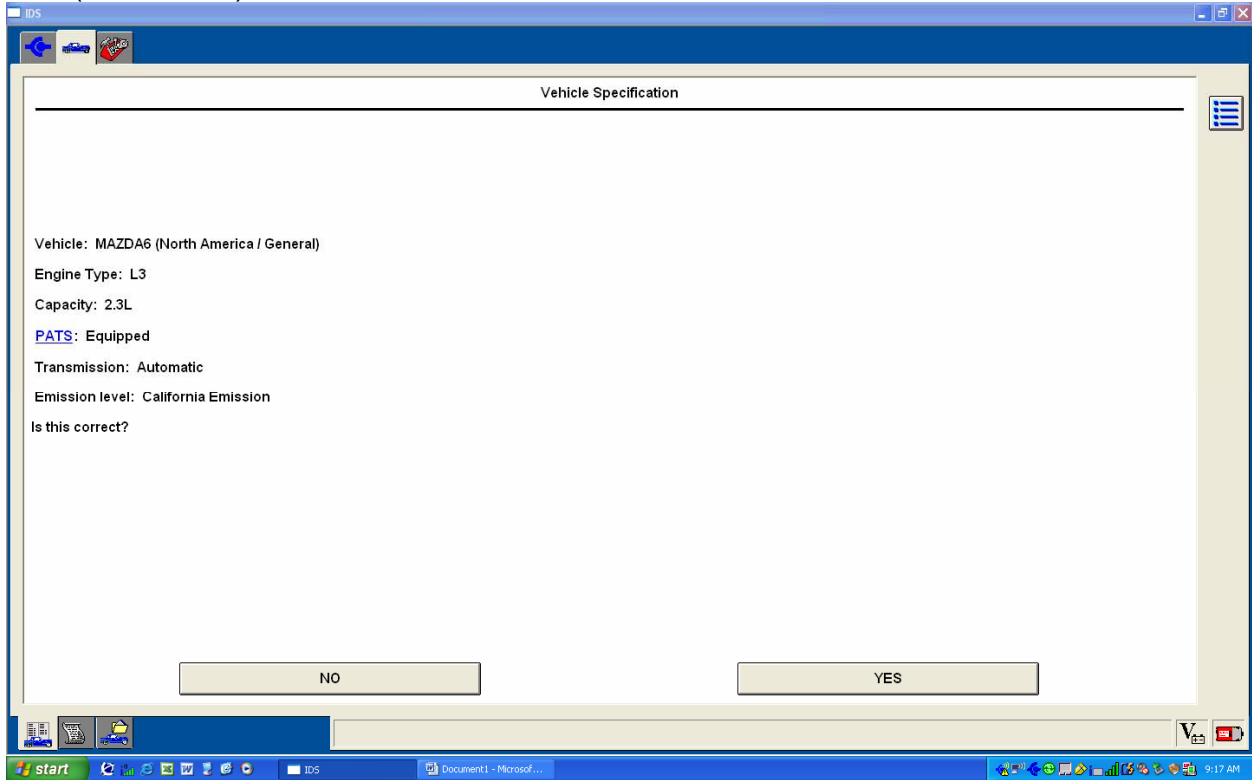
Select "All other" at top of the list. Press tick.



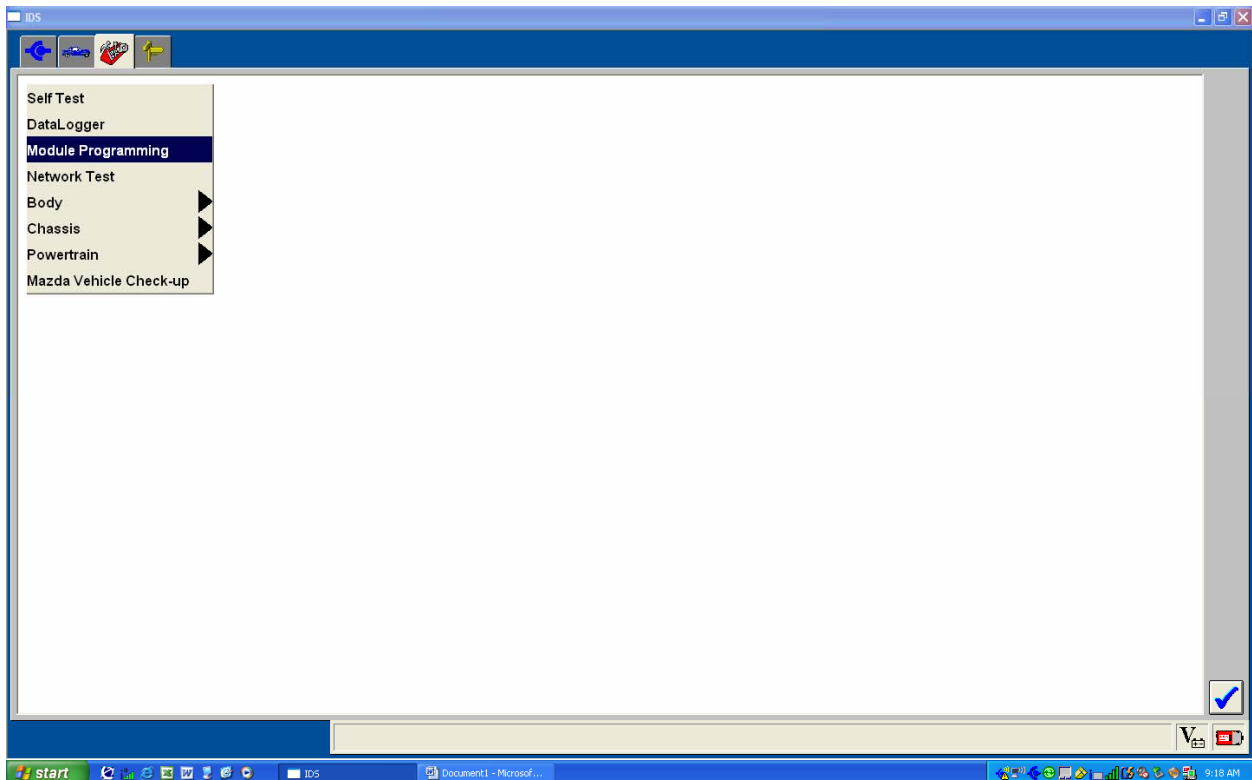
Screen shows "To enable diagnostic tester to identify the PCM, please enter one of the following on the next screen, PCM part number, Calibration number or Tear tag number. Press tick.



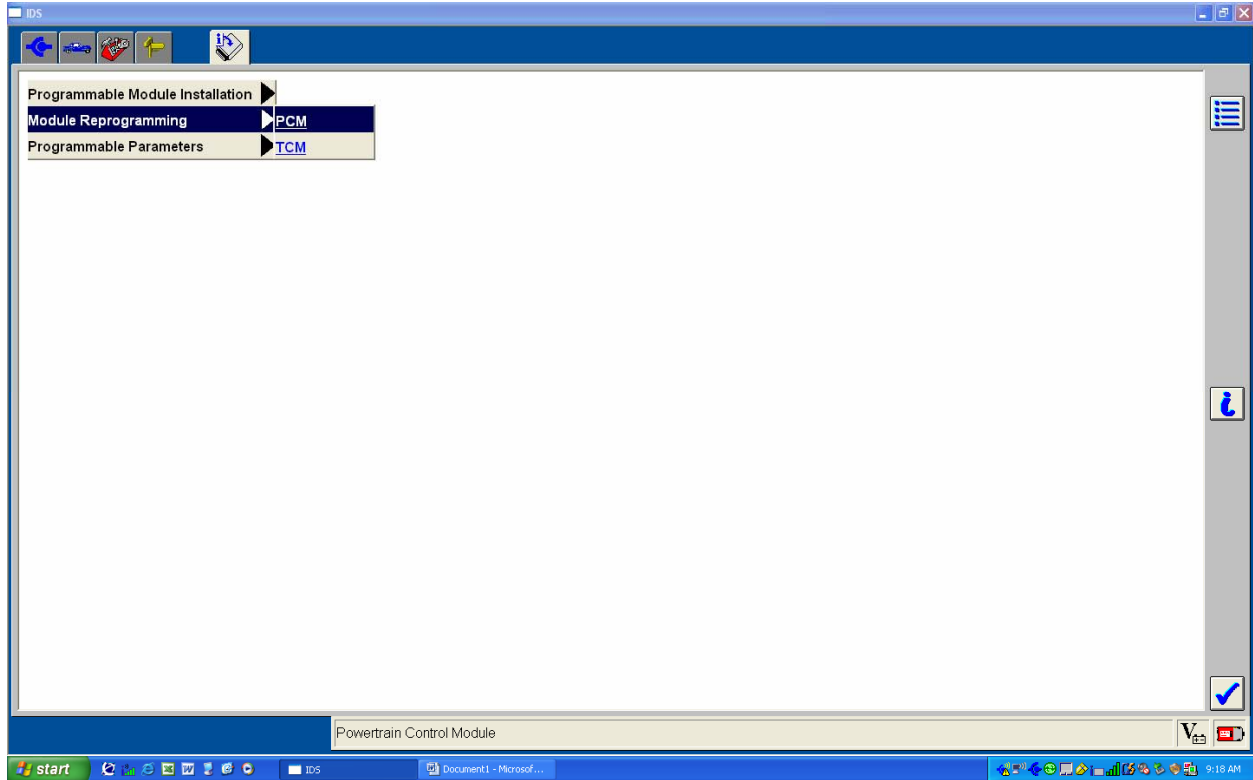
Enter the first 4 digits and the last letter of the PCM part number printed on PCM. Press tick. (See above)



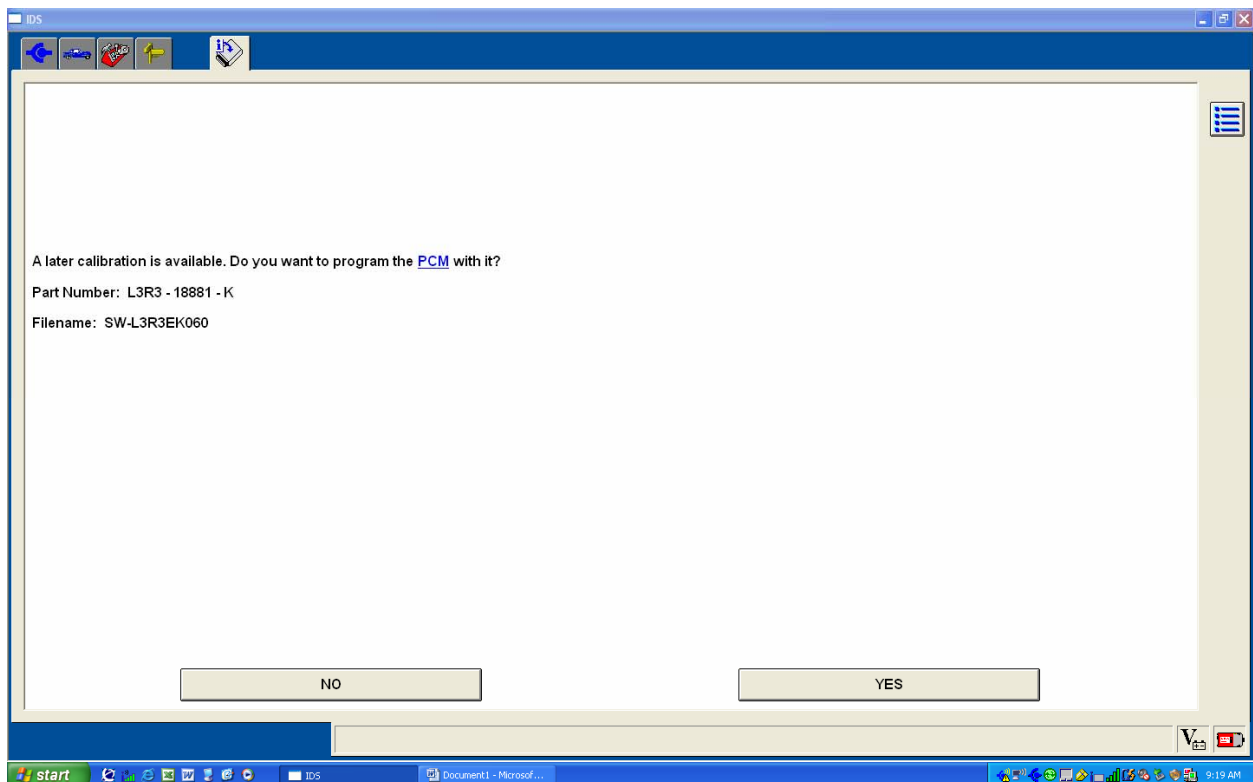
Screen shows Vehicle specification screen, if all correct, select yes.



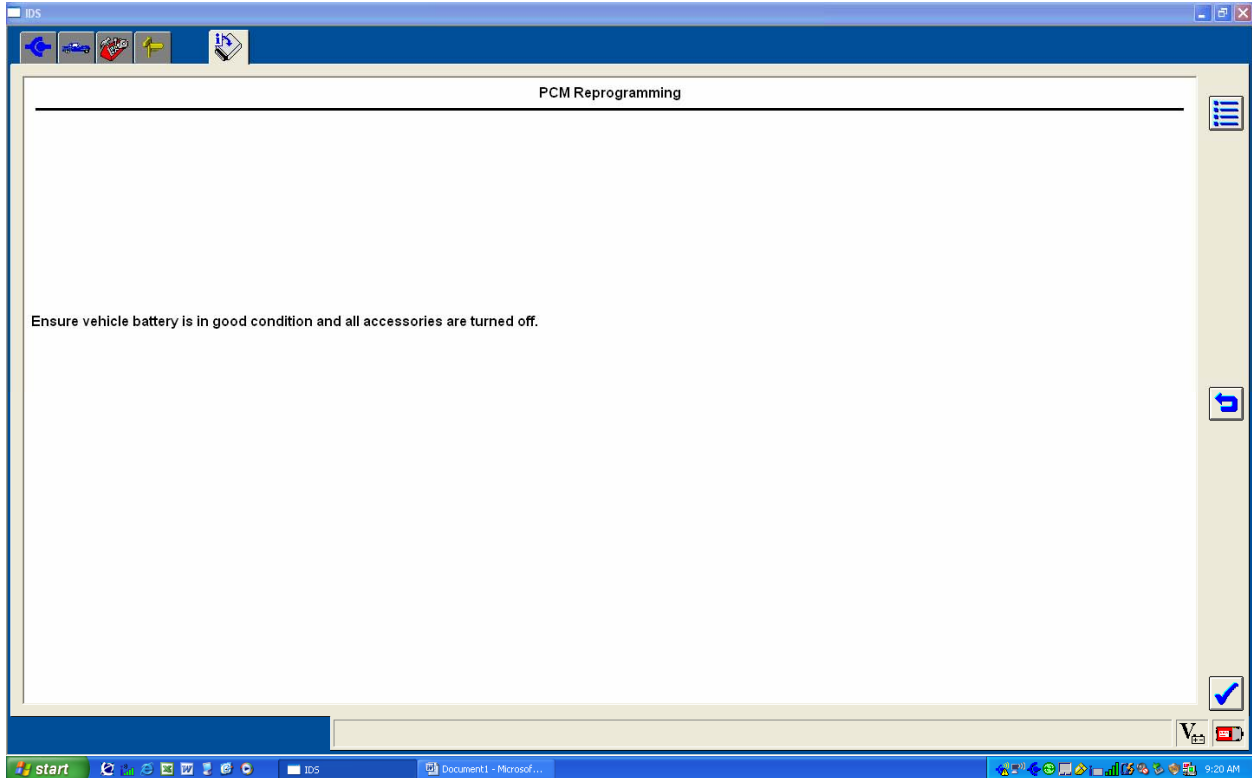
Select tool box icon at top of screen. Select module programming. Press tick.



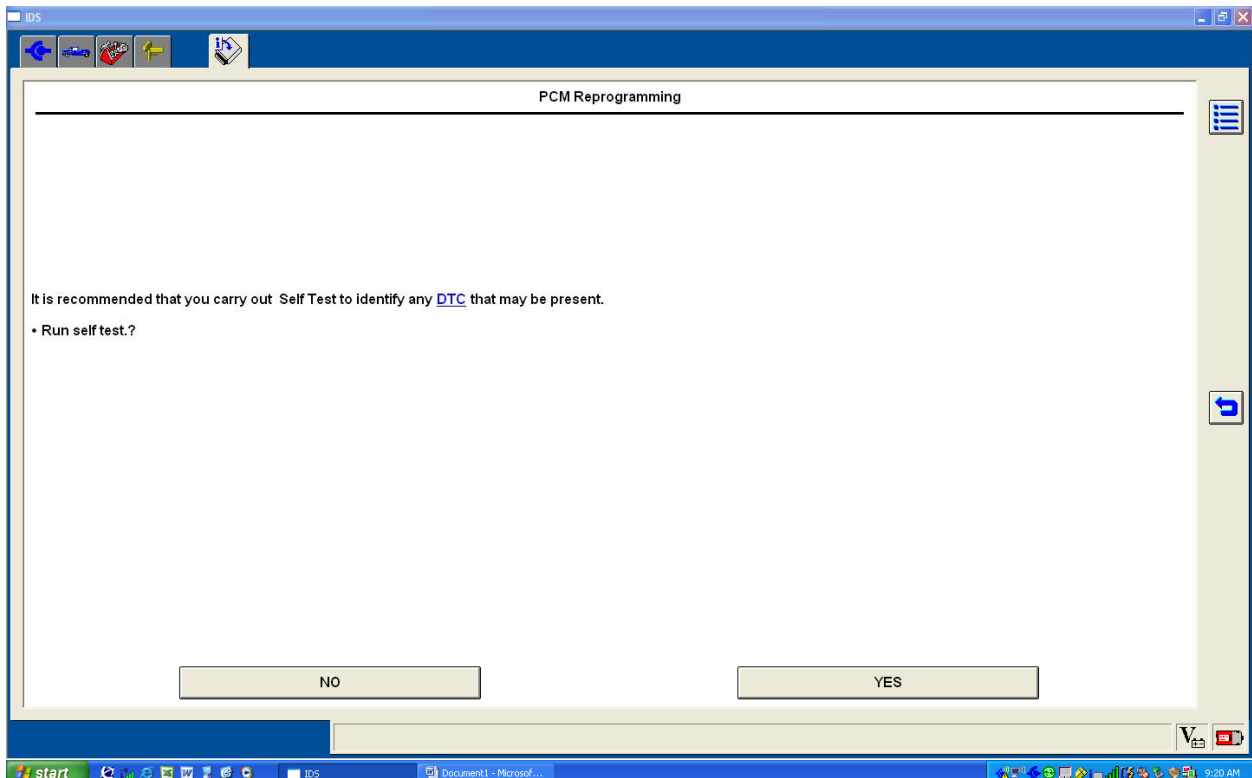
Select Module Reprogramming, PCM, press tick.



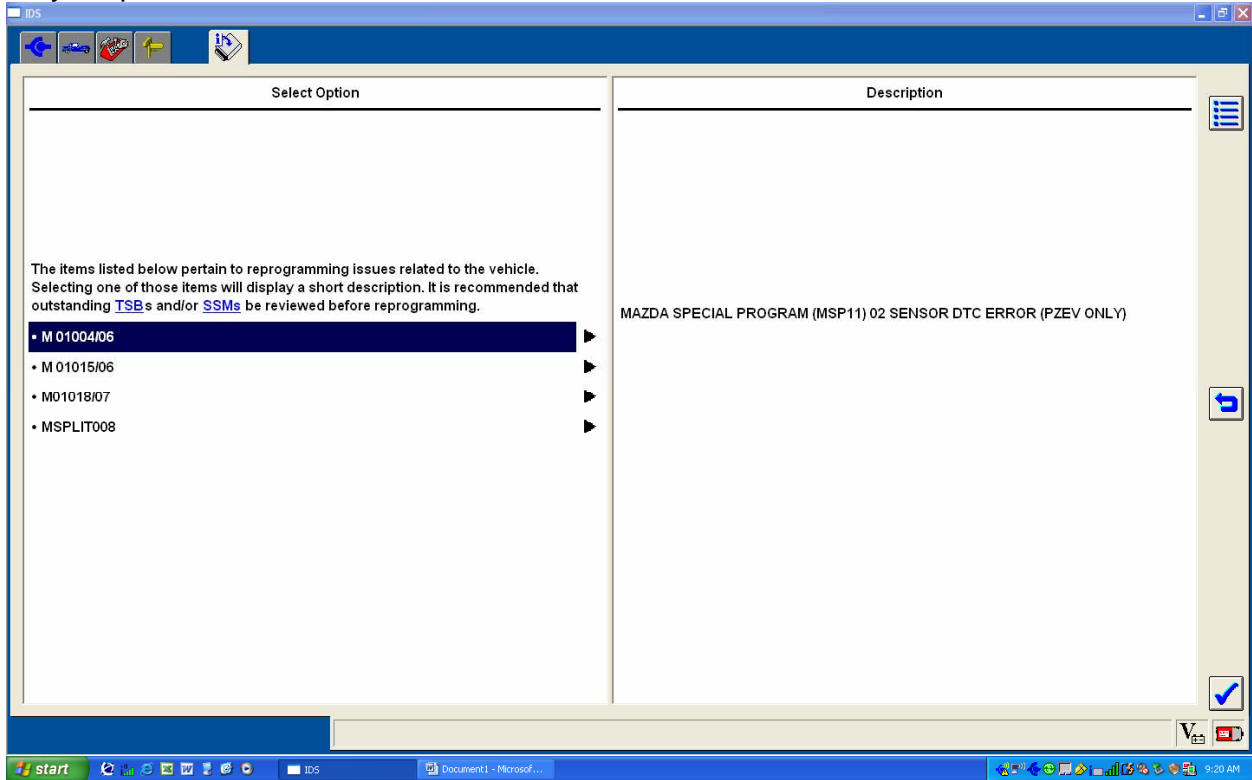
Screen shows “A later calibration is available. Do you want to program the PCM with it?”
Select “YES”



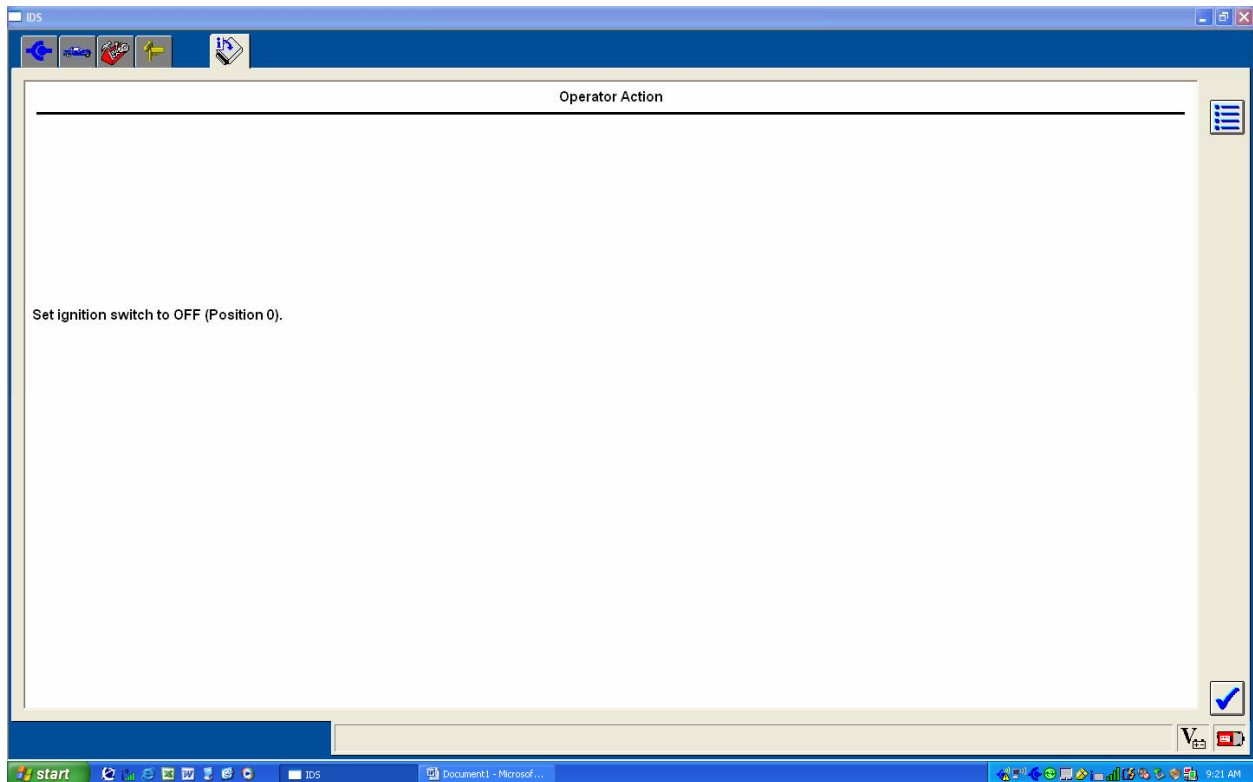
Screen shows “Ensure vehicle battery is in good condition and all accessories are turned off.” Press Tick.



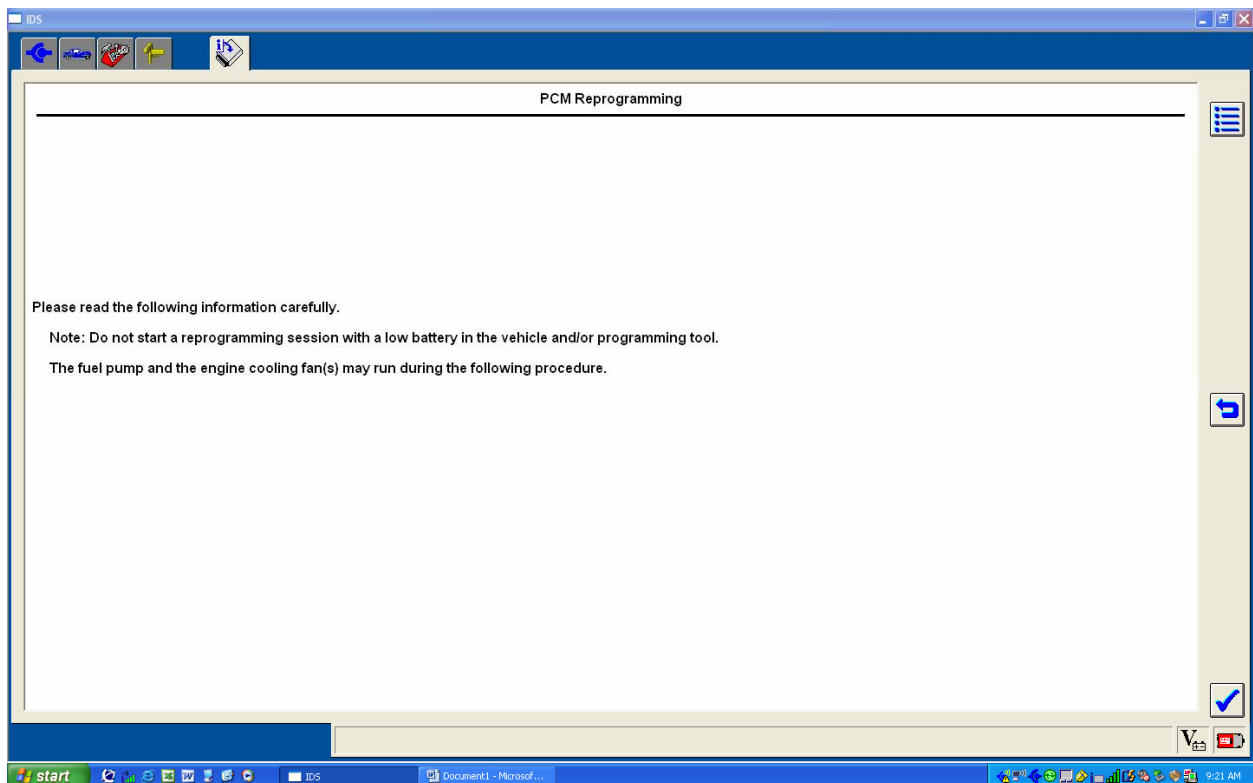
Screen shows “It is recommended that you carry out Self Test to identify any DTC that may be present.” Select “NO”



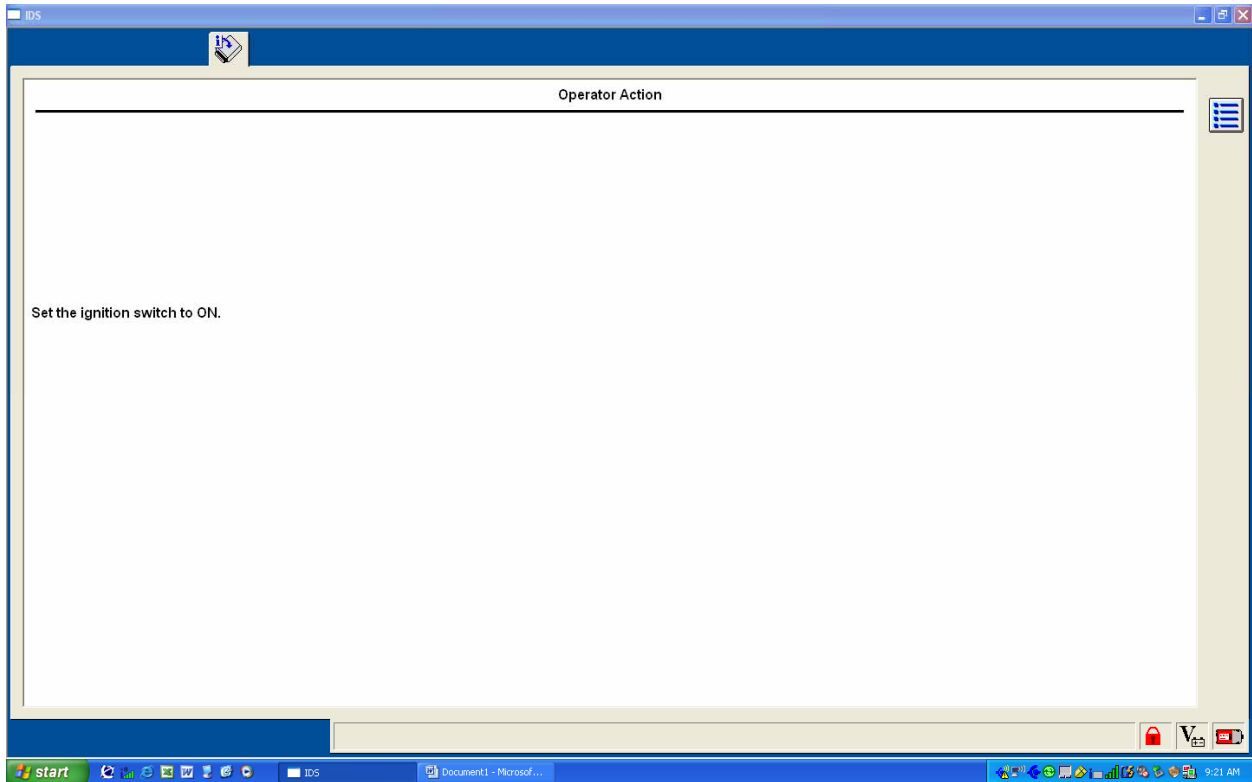
Screen may or may not show a list of reprogramming issues related to the vehicle. Press Tick.



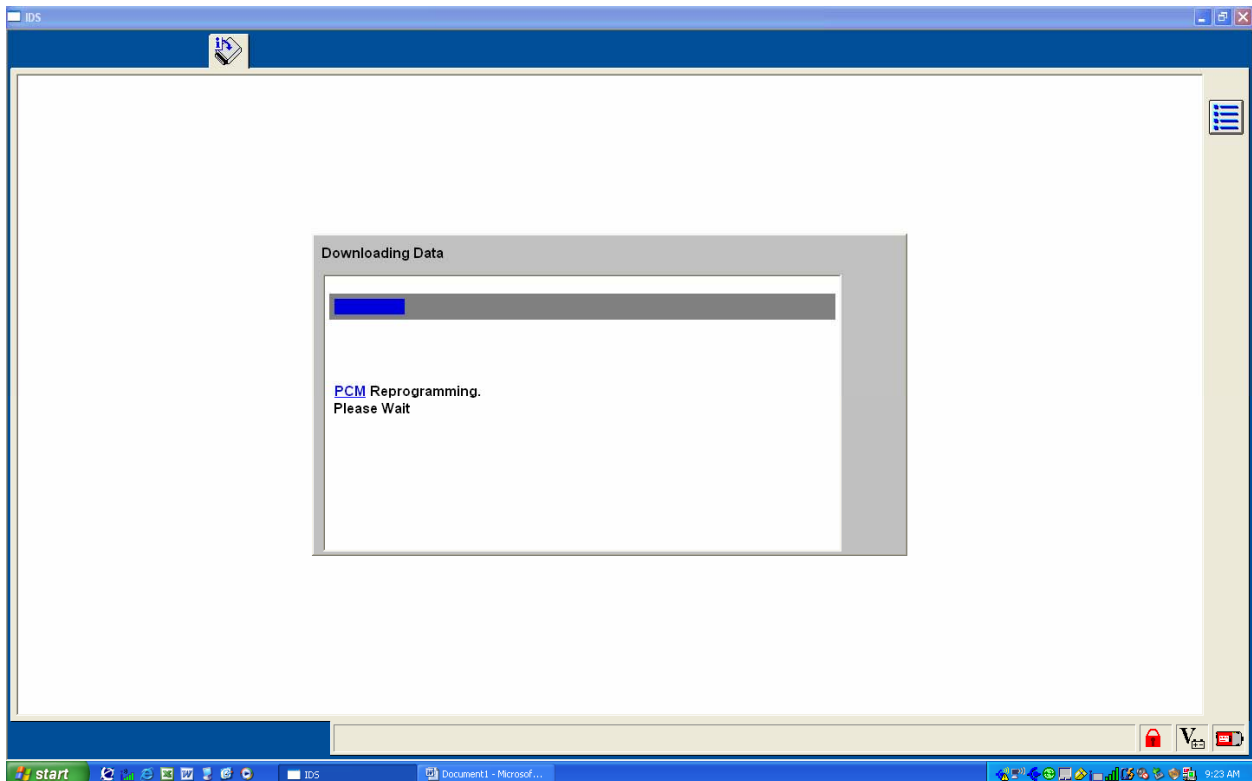
Screen shows “Set ignition switch to the off position” it is already off. Press Tick.



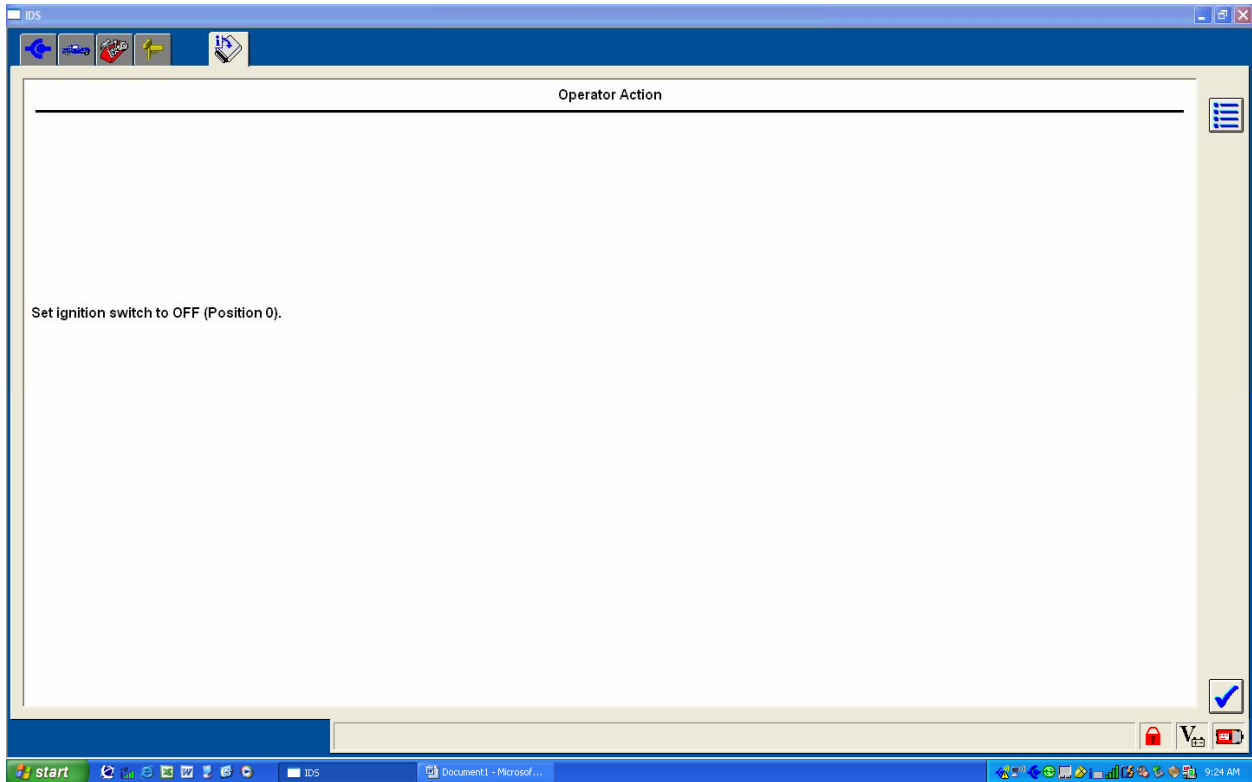
Screen shows “Please read the following information carefully. Note: Do not start a reprogramming session with a low battery in the vehicle and/or programming tool. The fuel pump and the engine cooling fan’s my run during the following procedure.” Press tick.



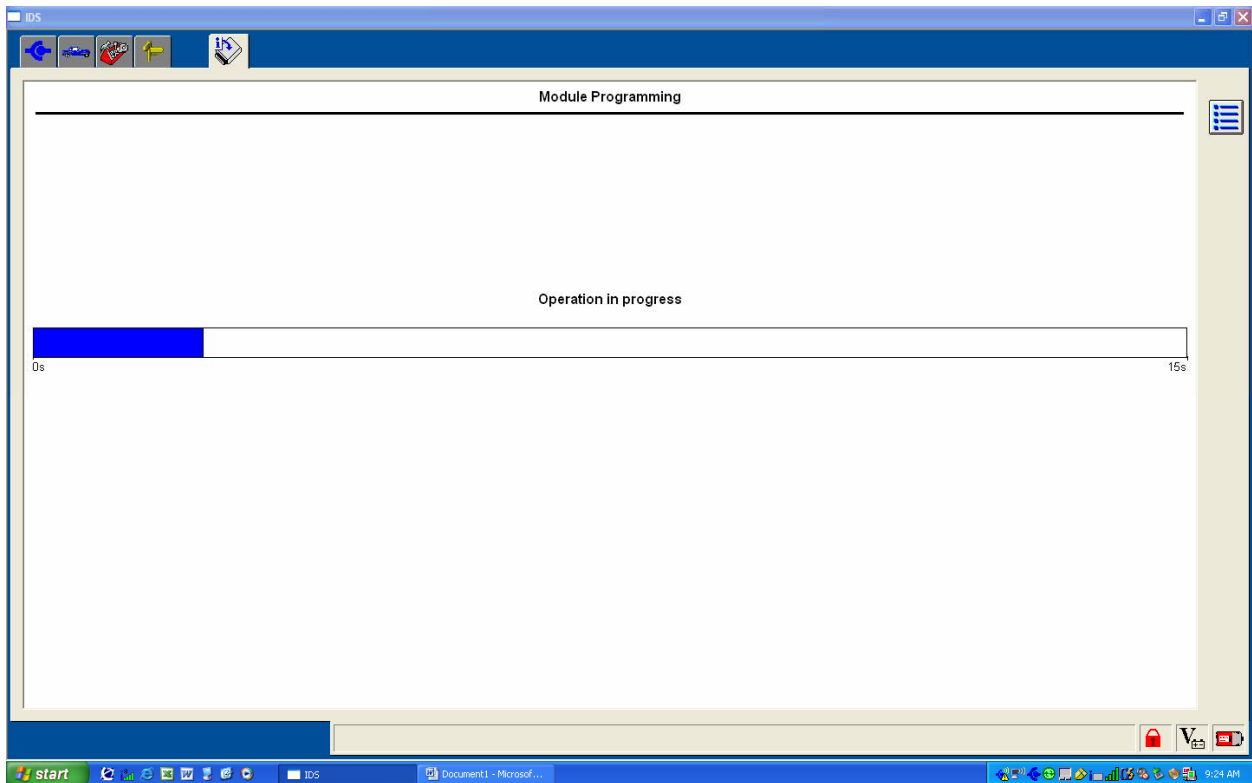
Screen shows “Set ignition switch to ON (Position 2)”. **Do this and press tick.**



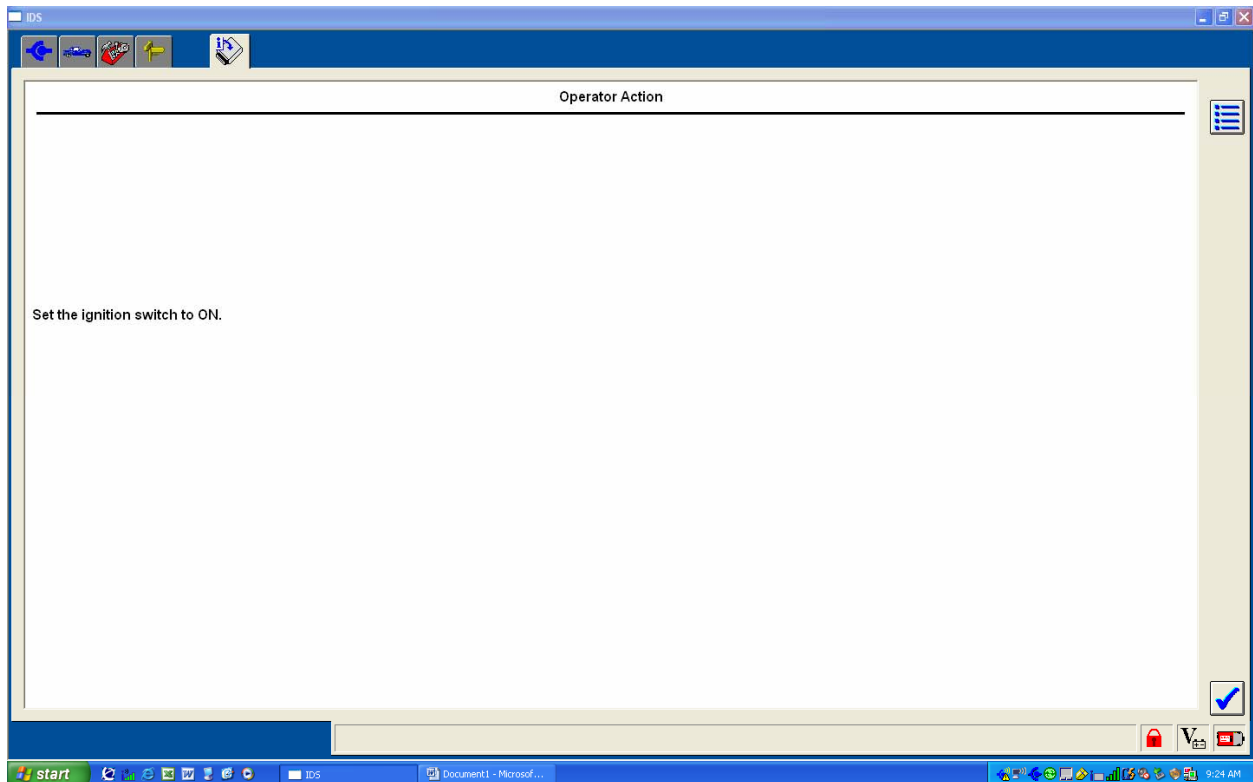
Screen shows “Downloading data, PCM programming please wait.”



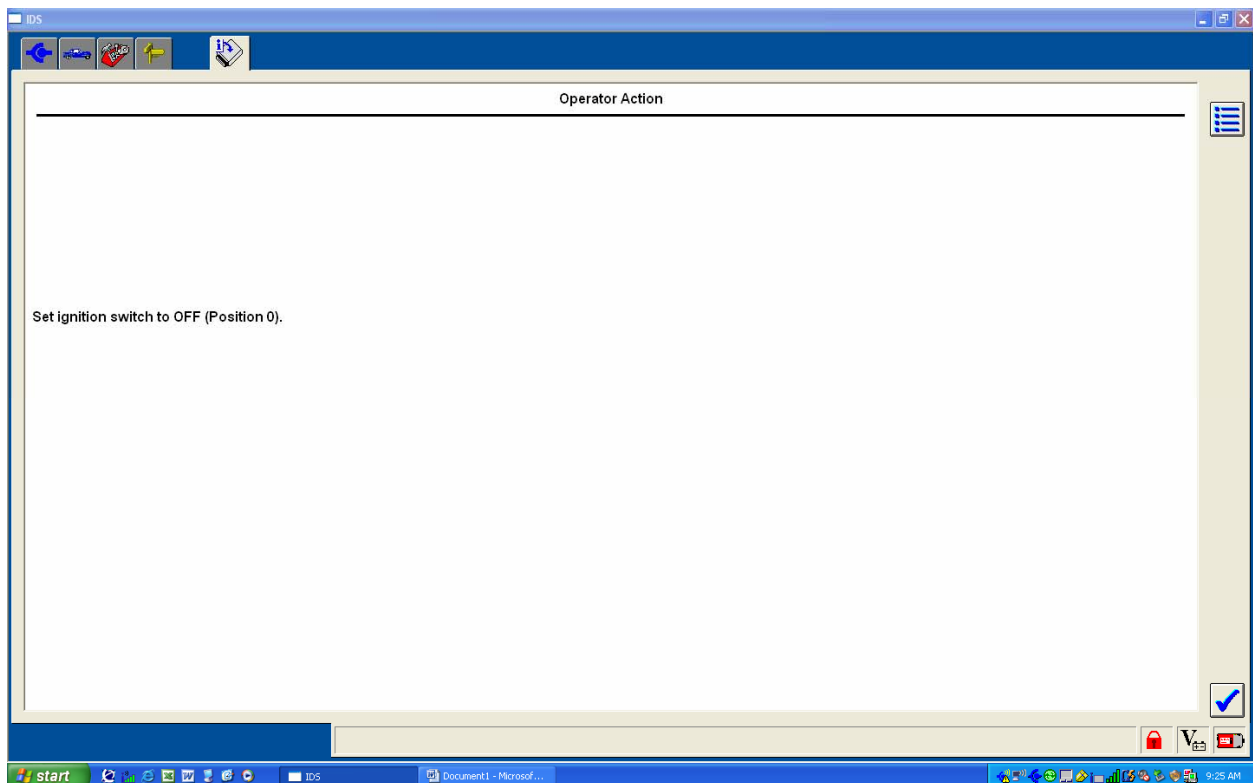
Screen shows “Set ignition switch to OFF (Position 0)”. Do this and press tick.



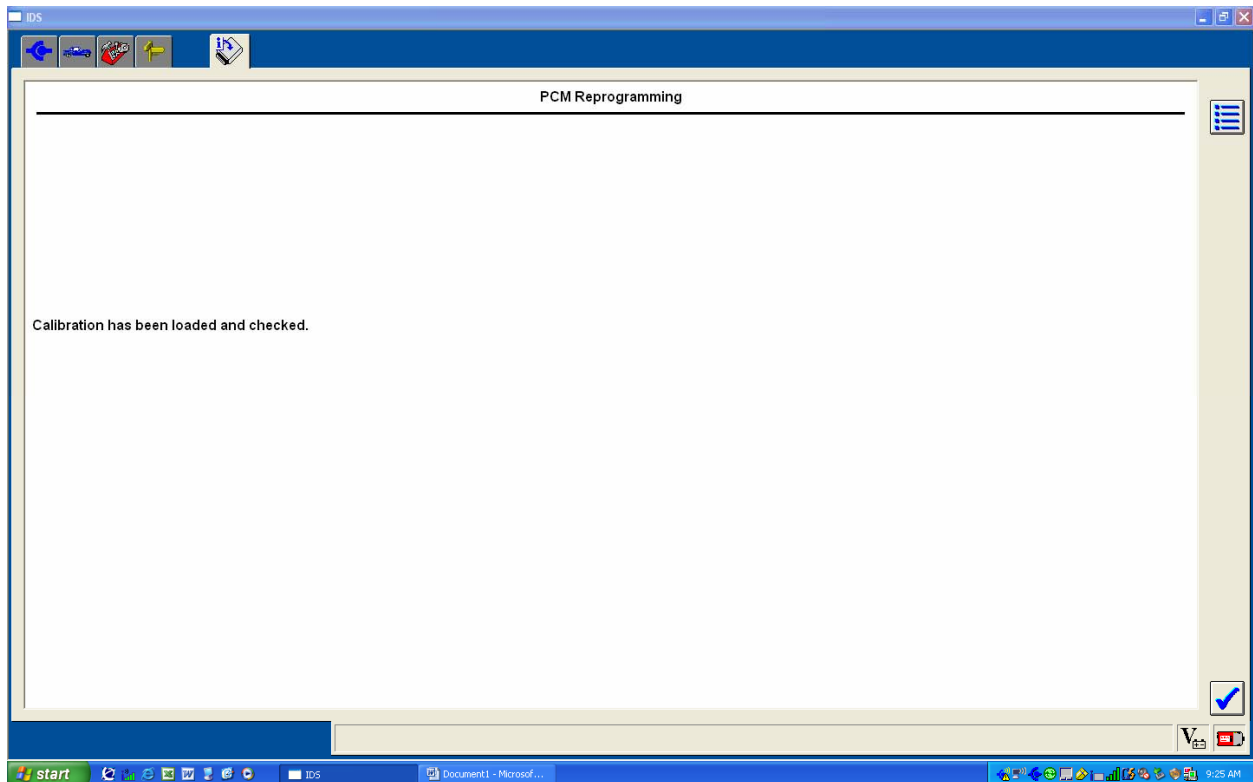
Screen shows “Module Programming, Operation in progress”.



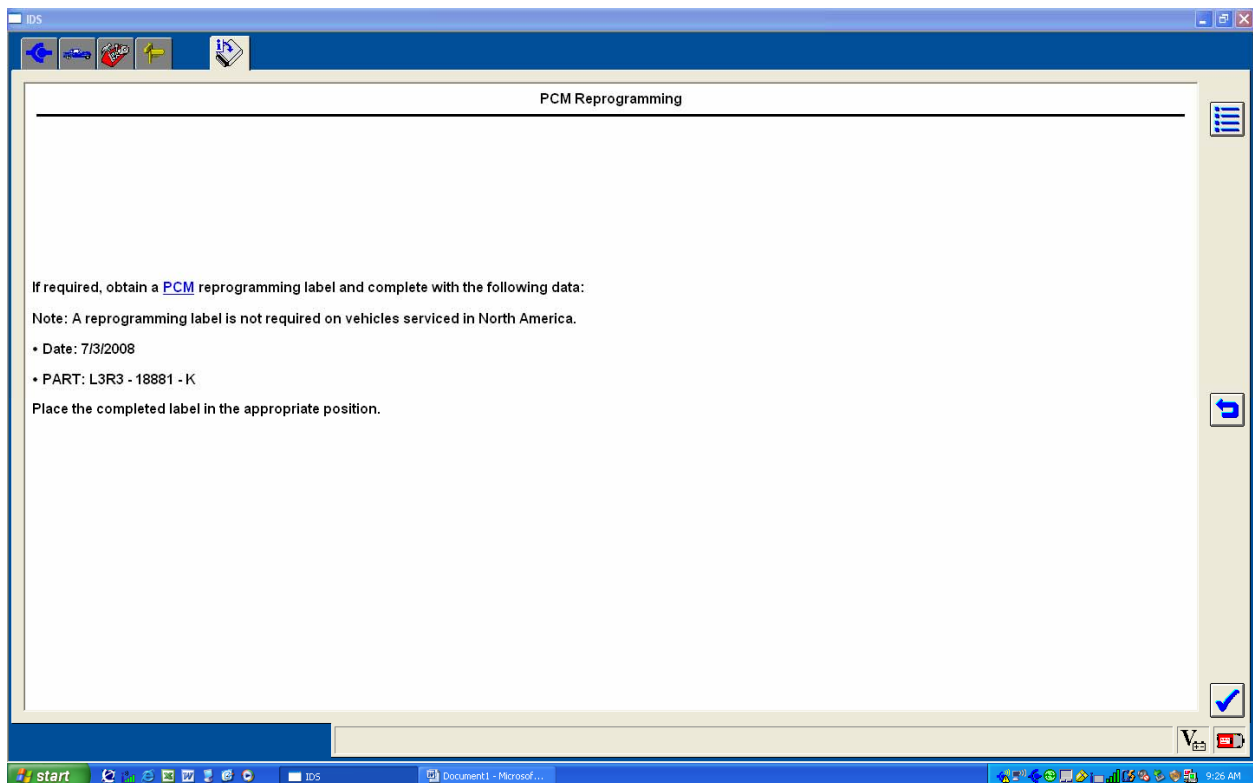
Screen shows “set ignition switch to on position”. Do this and press tick.



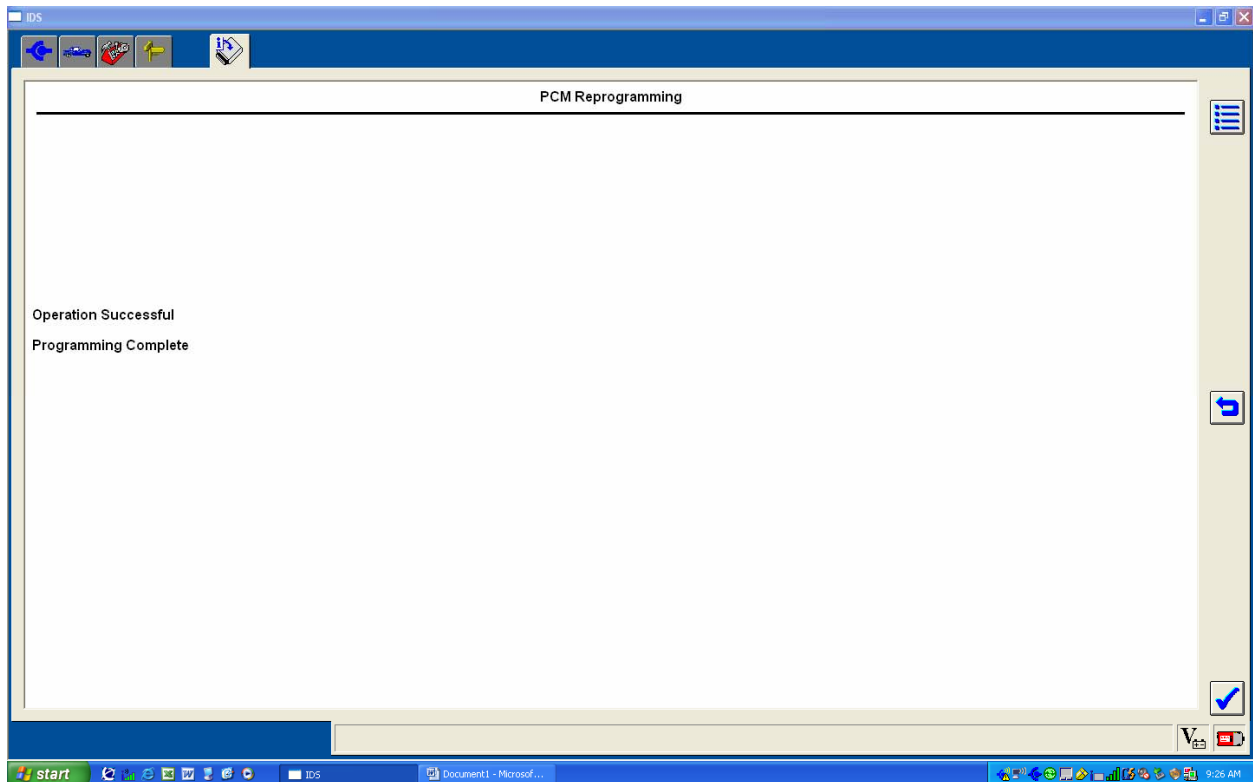
Screen shows “set ignition switch to off position”. Do this and press tick.



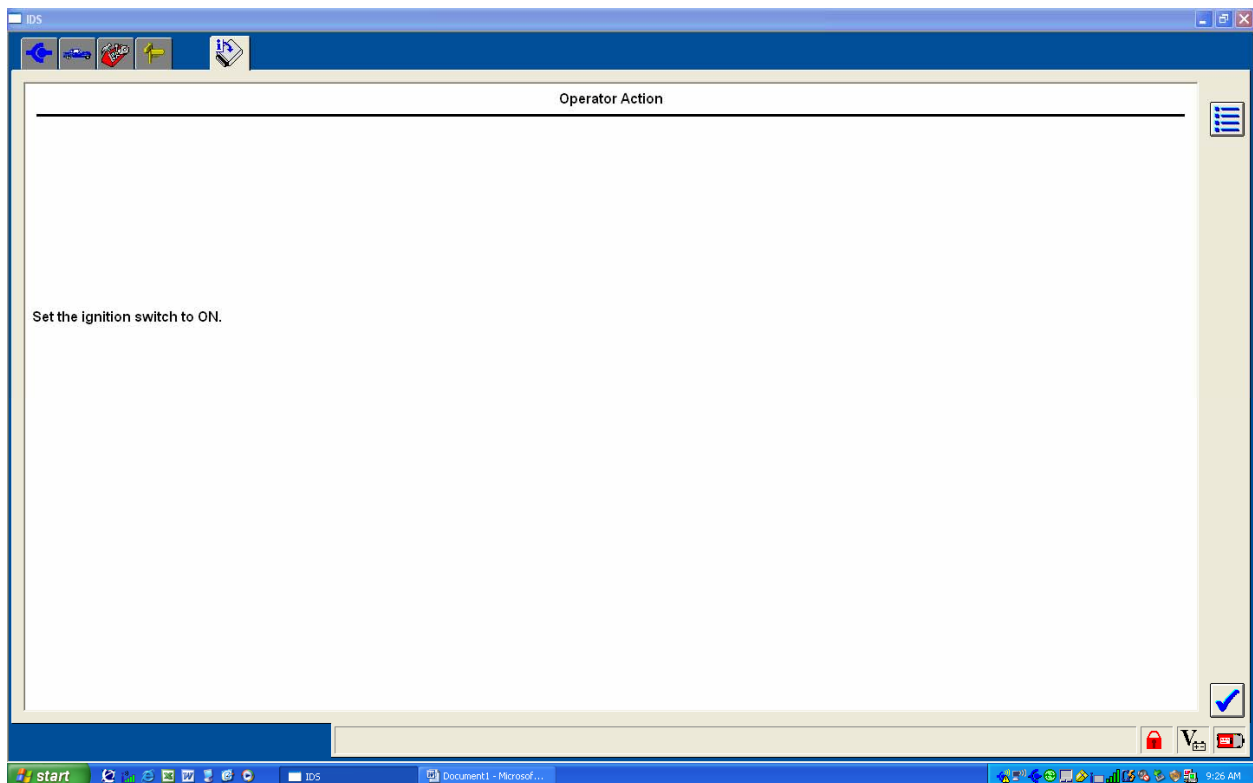
Screen shows "Calibration has been loaded and checked". Press tick.



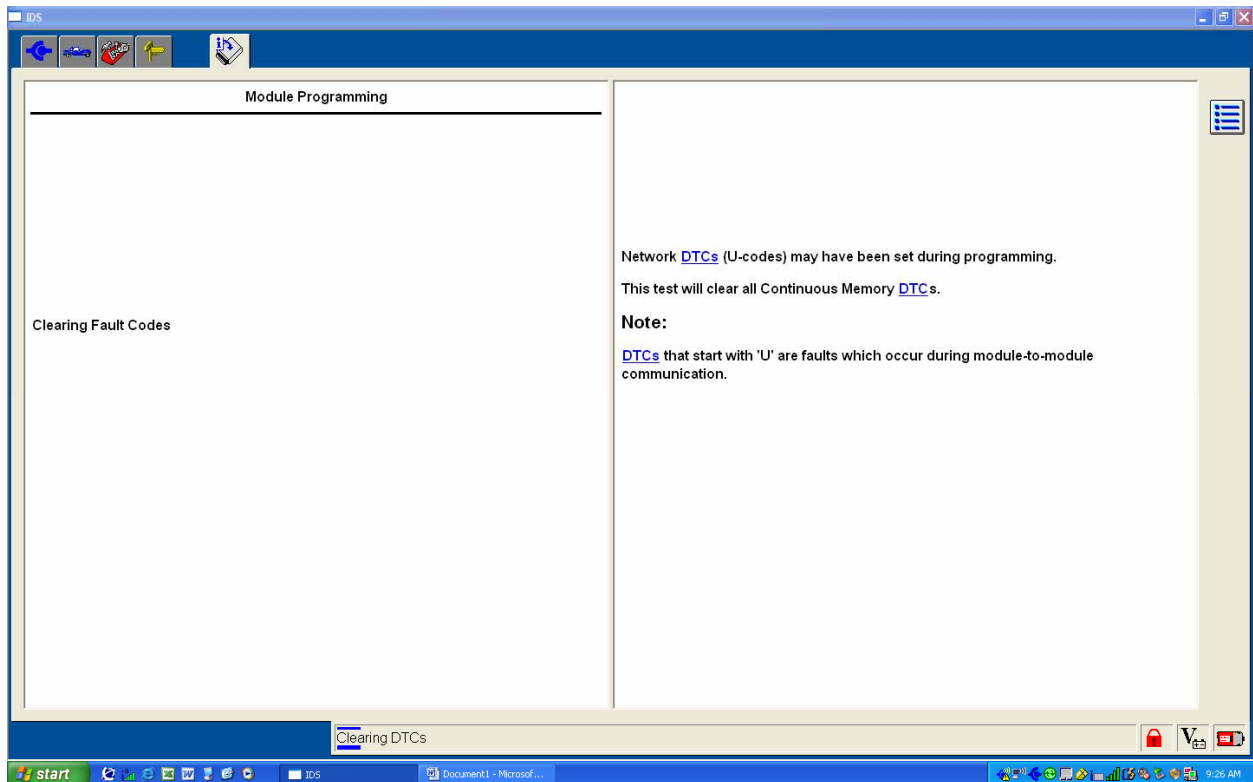
Screen shows "If required obtain a PCM reprogramming label and complete with the following data "Date" "Part #". Press tick.



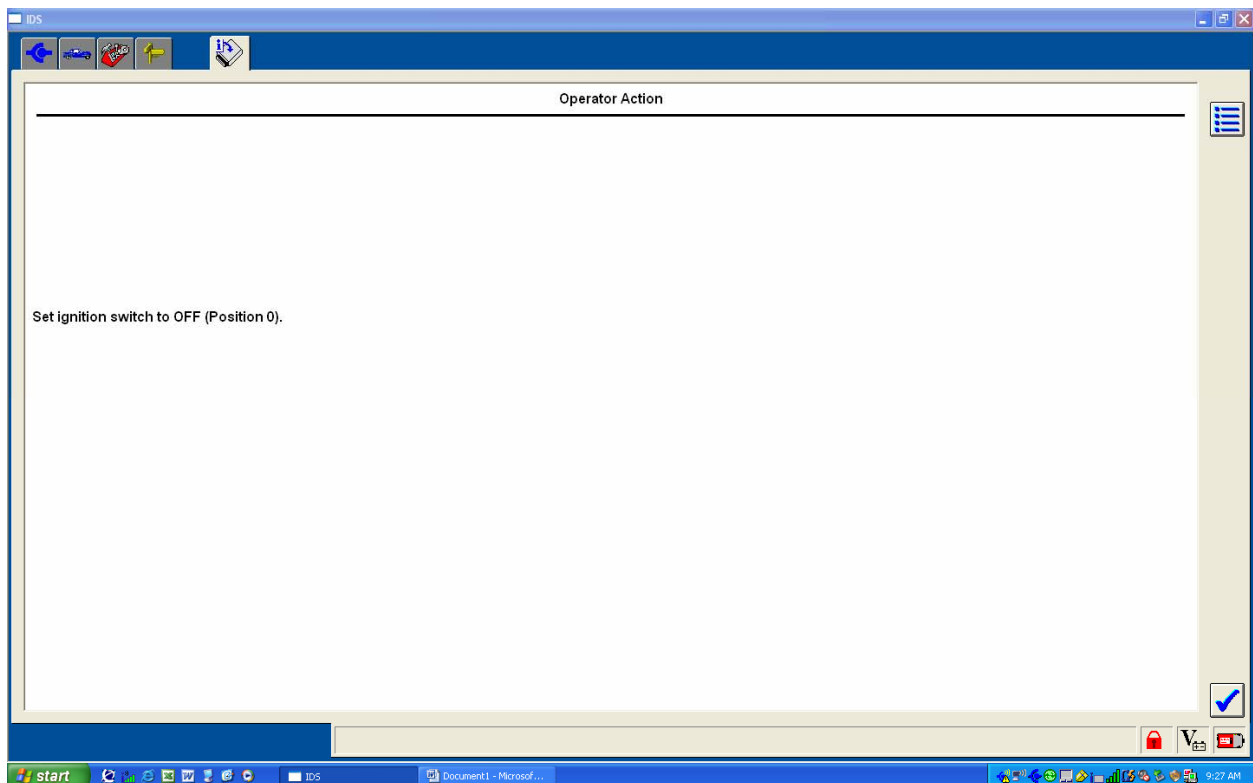
Screen shows "Operation successful, Programming complete". Press tick.



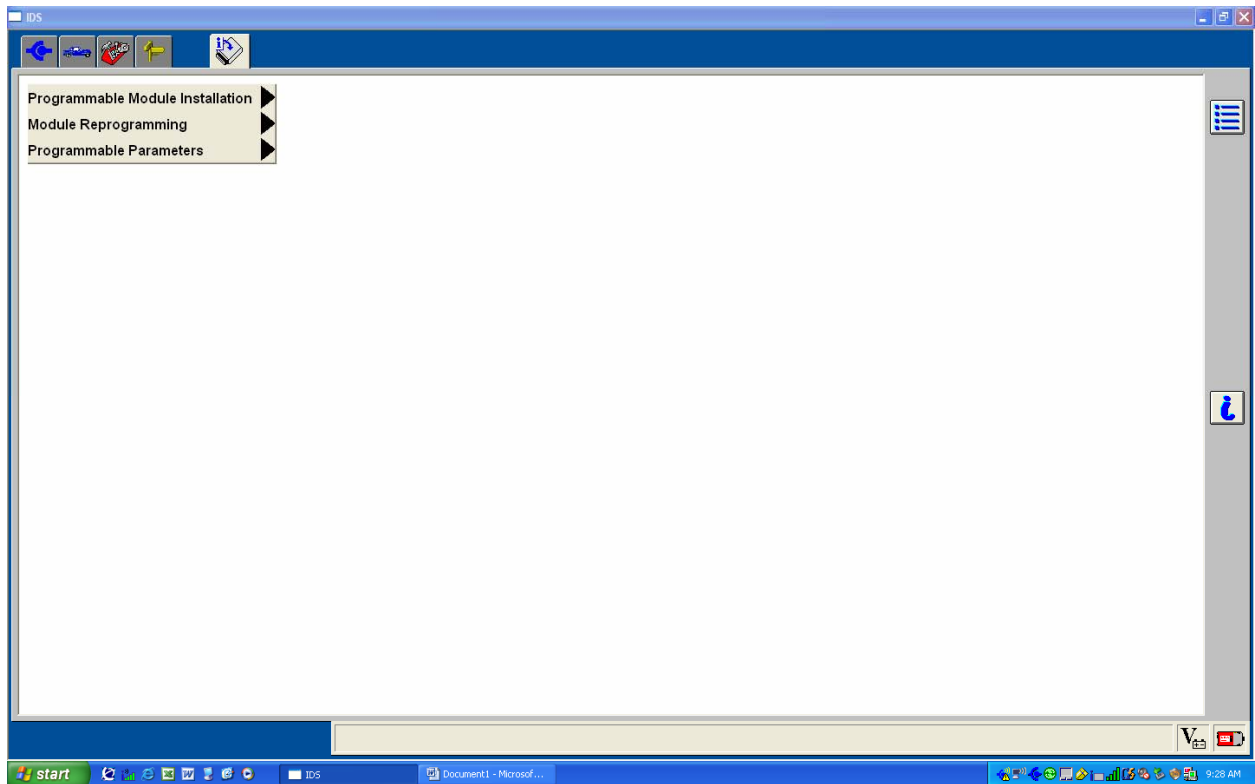
Screen shows "Set ignition switch to ON". Do this and press tick.



Screen shows “Clearing fault codes”.



Screen shows “Set ignition switch to OFF (Position 0)”. Do this and press tick.



Module recovery is now complete.