

035-04227

- 1 Panel, Roof
w/Sunroof F1Y3-70-60X
w/o Sunroof F1Y1-70-60X
- 2 Panel, Front Header F151-70-641
- 3 Panel, Rear Header F151-70-700
- 4 Reinf, Roof F151-70-660
- 5 Gusset, Roof Panel
w/Sunroof R F153-70-635
L F153-71-635
w/o Sunroof R F151-70-635
L F151-71-635
- 6 Brkt, Sunroof R F153-70-623
L F153-71-623
- 7 Moulding Assy, Roof
Brilliant Black (Code A3F) R F151-50-9H0-PZ
L F151-50-9L0-PZ
Lightning Yellow (Code A4J) R F151-50-9H0-93
L F151-50-9L0-93
Nordic Green (Code 27C) R F151-50-9H0-97
L F151-50-9L0-97
Sunlight Silver (Code 22V) R F151-50-9H0B-67
L F151-50-9L0C-67
Titanium Gray (Code 29Y) R F151-50-9H0-66
L F151-50-9L0C-01
Velocity Red (Code 27A) R F151-50-9H0-87
L F151-50-9L0-87
Winning Blue (Code 27B) R F151-50-9H0-94
L F151-50-9L0-94

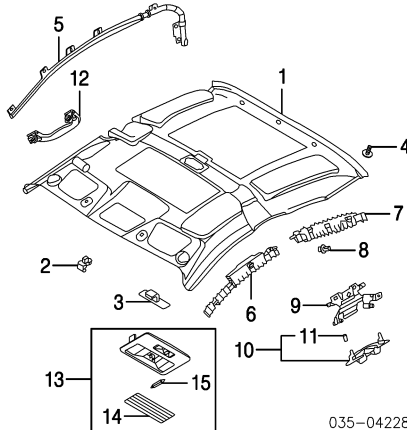
- 8 Cap, Front Moulding
Brilliant Black (Code A3F) R F151-50-9H1-PZ
L F151-50-9L1-PZ
Lightning Yellow (Code A4J) R F151-50-9H1-93
L F151-50-9L1-93
Nordic Green (Code 27C) R F151-50-9H1-97
L F151-50-9L1-97
Sunlight Silver (Code 22V) R F151-50-9H1A-67
L F151-50-9L1A-67
Titanium Gray (Code 29Y) R F151-50-9H1-66
L F151-50-9L1-66
Velocity Red (Code 27A) R F151-50-9H1-87
L F151-50-9L1-87
Winning Blue (Code 27B) R F151-50-9H1-94
L F151-50-9L1-94
- 9 Protector, Moulding (2/Side) R/L GJ6A-50-9H9
- 10 Cap, Rear Moulding
Brilliant Black (Code A3F) R F151-50-9H2-PZ
L F151-50-9L2-PZ
Lightning Yellow (Code A4J) R F151-50-9H2-93
L F151-50-9L2-93
Nordic Green (Code 27C) R F151-50-9H2-97
L F151-50-9L2-97
Sunlight Silver (Code 22V) R F151-50-9H2A-67
L F151-50-9L2A-67
Titanium Gray (Code 29Y) R F151-50-9H2-66
L F151-50-9L2-66
Velocity Red (Code 27A) R F151-50-9H2-87
L F151-50-9L2-87
Winning Blue (Code 27B) R F151-50-9H2-94
L F151-50-9L2-94

- 11 Clip, Moulding (3/Side) R/L GJ6A-50-629

INTERIOR TRIM

Illustration Located in Next Column

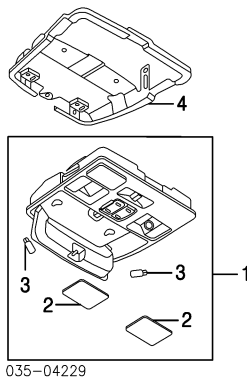
- 1 Headliner
w/Sunroof FE03-68-030D-77
w/o Sunroof FE01-68-030H-77
- 2 Clip, Visor-See Windshield Section
- 3 Clip, Ctr Headliner F151-68-0C0A
- 4 Clip, Rear Headliner (3) GJ21-68-885B-03
- 5 Module, Side Curtain Air Bag-See Air Bag System Section
- 6 Pad, Front Impact R FE01-68-H10C
L FE01-68-H20C
- 7 Pad, Rear Impact R F152-68-H50C
L F152-68-H60C
- 8 Clip, Rear Pad R/L H380-68-885
- 9 Bracket, Side Trim R F151-68-DL1A
L F151-68-DL6A
- 10 Trim Assy, Side R F151-68-12XA-02



035-04228

- 11 Clip, Trim (2/Side) L F151-68-12YA-02
R/L LA10-68-D21
*Included w/Side Trim Assy
- 12 Handle, Assist R GJ6A-69-470B-77
- 13 Lamp Assy, Dome D350-51-310D-77
- 14 Lens, Dome Lamp D350-51-311B
- 15 Bulb, Dome Lamp 9970-05-100L
*Included w/Dome Lamp Assy

OVERHEAD CONSOLE



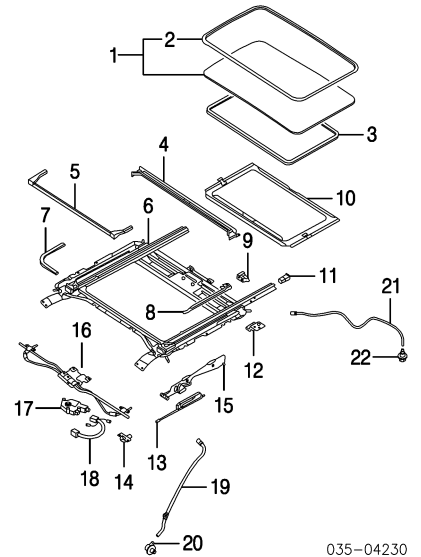
035-04229

- 1 Console Assy, Overhead
w/Sunroof GK2A-69-970B-77
w/o Sunroof GK2E-69-970-77
- 2 Lens (3) R GJ6A-69-973
L GJ6E-69-973
- 3 Bulb (1) R/L 0000-11-0194
*Included w/Overhead Console Assy
- 4 Brkt, Overhead Console
w/Sunroof F153-69-98X
w/o Sunroof F151-69-98XA

SUNROOF

Illustration Located in Next Column

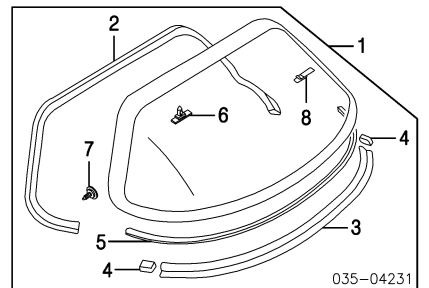
- 1 Glass Assy, Sunroof F153-69-810
- 2 W/Strip, Glass (1) F153-69-825
*Included w/Sunroof Glass Assy
- 3 Welt, Sunroof F153-69-981-77
- 4 Rail, Drip F153-69-867
- 5 Deflector F153-69-880
- 6 Frame, Sunroof F153-69-840
- 7 Cushion, Frame F153-69-849
- 8 Link, Sunroof R F153-69-9H1
L F153-69-9H2
- 9 Plate, Set R F153-69-858
L F153-69-859
- 10 Sunshade F153-69-890-77
- 11 Stopper, Sunshade R/L F153-69-892
- 12 Bracket, Sunroof R/L F153-69-843-4
- 13 Cable, Drive R/L F153-69-912-3
- 14 Guide, Front Cable R F153-69-877
L F156-69-877
- 15 Guide, Rear Cable R/L F153-69-862-3
- 16 Drive Unit F153-69-860
- 17 Motor, Sunroof F153-69-870
- 18 Harness, Sunroof F153-69-872
- 19 Hose, Front Drain R N.A.
L F153-69-920A
- 20 Grommet, Front Hose R/L G14T-69-926A
- 21 Hose, Rear Drain R F156-69-920
L F160-69-920



035-04230

- 22 Grommet, Rear Hose R/L LC73-61-557A

BACK WINDOW

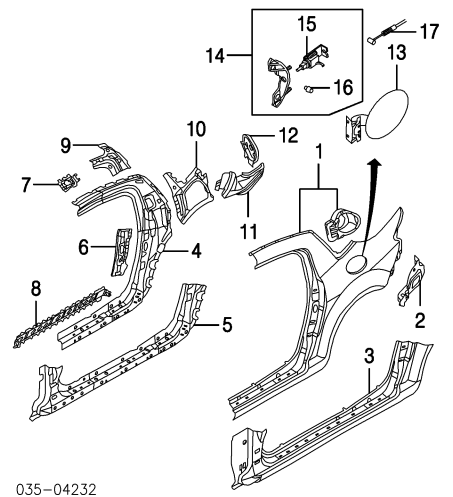


035-04231

- 1 Window Assy, Back Mazda FE01-63-930B
- 2 Moulding, Upper F151-50-611A
- 3 Moulding, Lower F151-50-614
- 4 Gasket, Joint (1) R/L F151-50-6G6A
- 5 Weatherstrip, Lower F151-50-899
- 6 Clip, Pin (3) Type 1 (3) D376-63-938
Type 2 F151-63-938A
- 7 Bolt, Stud (1) R/L F151-63-939A
- 8 Terminal, Glass (3) FB01-63-959
*Included w/Back Window Assy

QUARTER PANEL

SHEET METAL



035-04232

- 1 Panel, Outer Quarter R F1Y1-70-410D
L F1Y1-71-410C