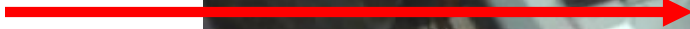
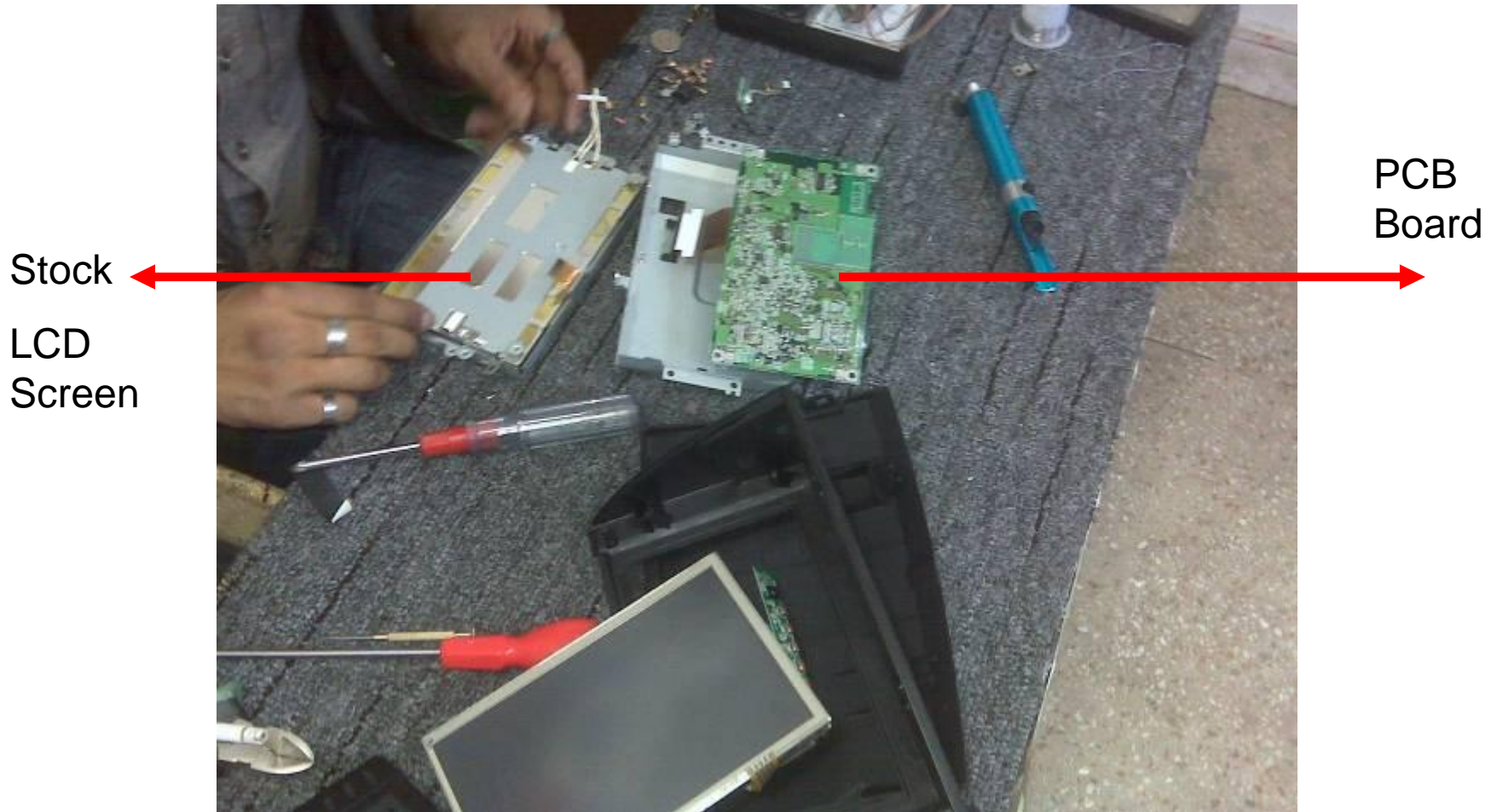


Picture of Nav Holder

Picture of
insides of
Nav Holder



Nav Holder has a PCB Board at the Back and Lcd in the front. Take out the LCD screen and keep the board. You need the board for open/close functionality of Nav Holder



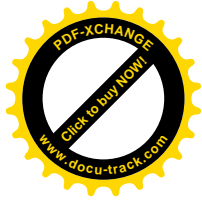


Replace the Nav LCD Screen with Lilliput LCD Screen + PCB Board



Lilliput LCD

Lilliput Board



Steps to Nav Screen Replacement

- Take out Nav Holder
- Open Nav Holder
- Replace Lcd of Nav with LCD + PCB of Lilliput.
- Put the LCD+ PCB of Lilliput and PCB of Stock Navigation inside the Nav Holder.
- Close the Nav HolderJ
- You are done but do it carefully because I put a small crack on my screen while doing it.