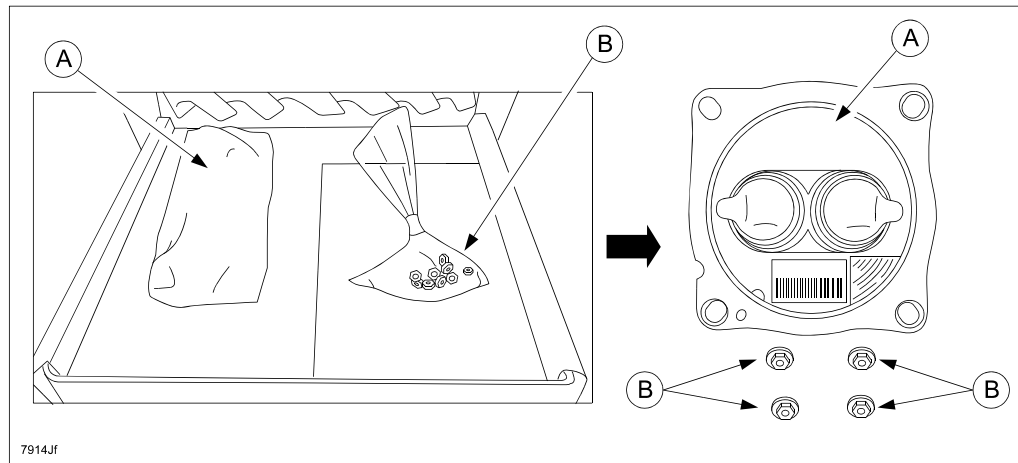


2004-2007 Mazda6, 2006-2007 Mazdaspeed6, and 2004-2008 RX-8:

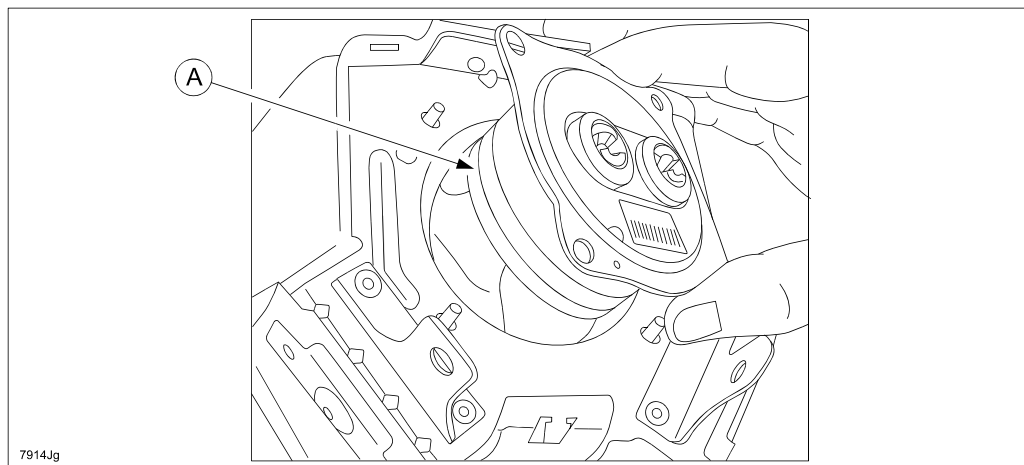
Driver-Side Air Bag Inflator Replacement Procedure:

Parts Information: The service parts are available in one box [Inflator (A) and 4 Nuts (B)].



Outline:

1. Remove the inflator (A) from the air bag module then replace it with a modified one.



2. Pack and return the removed inflator as follows:

IMPORTANT: Be sure to follow the packing and shipping instructions provided in the carton and in Attachment IV, Air Bag Inflator Return Instructions.

CAUTION:

- Use the same carton which was used to deliver a new inflator. It is a specialized box that is internationally accepted for shipping an inflator.
- Pack the old inflator in the box exactly in the same manner as the new inflator was packed.

Air Bag Module Removal:**WARNING:**

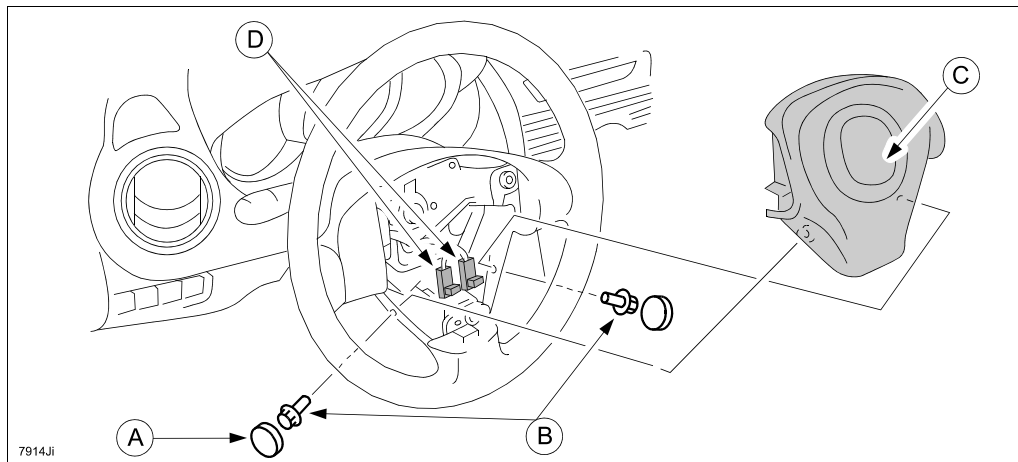
- Perform the replacement in a clean environment. Oil, grease, water, etc. on components may cause the air bag modules to fail to deploy in an accident, which may cause serious injury. Do not allow oil, grease, water, etc., on components.
- Inserting a screwdriver, etc., into the connector of an air bag module may damage the connector and cause the air bag module to deploy improperly, which may cause serious injury. Do not insert any foreign objects into the connector.
- Do not disassemble the vehicle, other than instructed here.
- Do not make an attempt to directly supply electrical power to the module and the inflator.
- Keep the module facing of the pad surface upwards at all times, except during replacement.
- Do not use the module and new inflator if they were dropped on the ground.
- Avoid module and inflator exposure to temperatures of 194 degrees F (90 degrees C) or more.

1. Turn the ignition switch to the LOCK position.
2. Record the customer's preset radio stations.
3. Disconnect the negative battery cable and wait for one (1) minute or more.
4. Remove the driver-side air bag module.
 - a. Remove the covers (A).
 - b. Remove the bolts (B).
 - c. Disconnect the connectors (D). Using a flathead screwdriver, pry out the connector's stopper plate.

CAUTION:

- Be careful when prying out the stopper plate. Otherwise, damage to the stopper plate could occur. Or if it pops off and is lost, it is not available as a separate part.
- The stopper plate must be pryed up before disconnecting the connector. Otherwise, the connector could be damaged if trying to disconnect it with the stopper plate engaged.
- Use extreme care when disconnecting the connector. Otherwise, damage to the connector could occur.

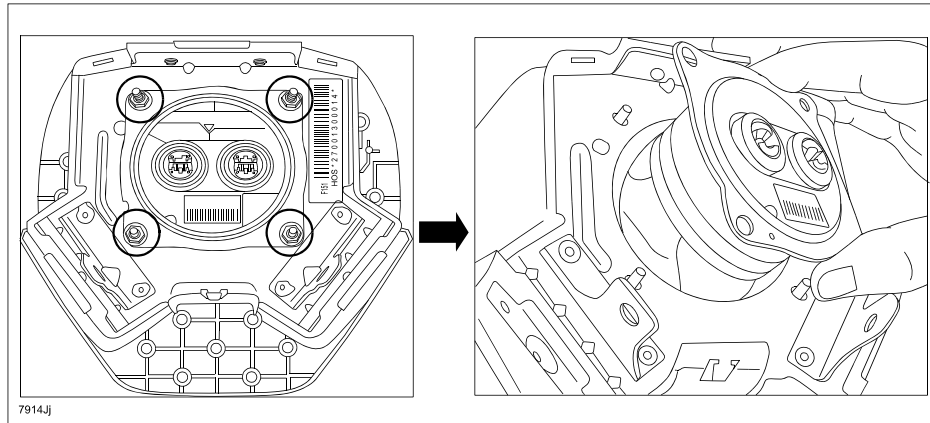
- d. Remove the air bag module (C).



Inflator Replacement:

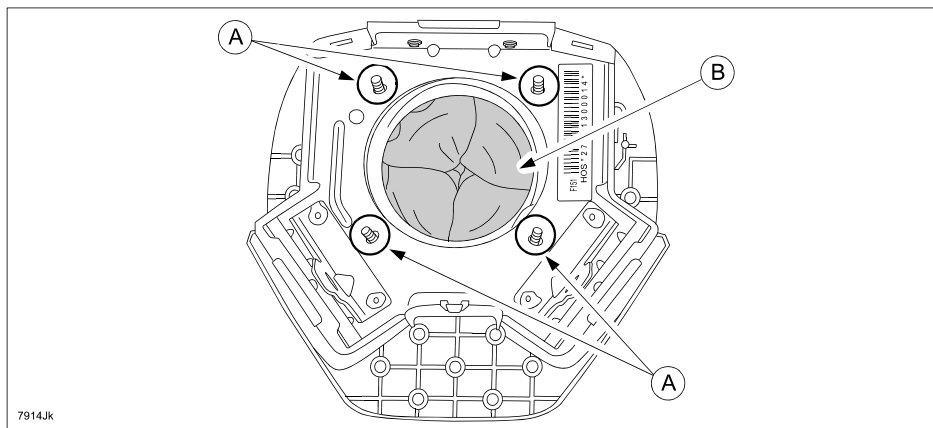
1. Set the airbag face down onto a surface that will not scratch or damage the airbag face.
2. Remove the 4 nuts, then remove the inflator from the air bag body. Discard the original nuts

NOTE: DO NOT use an impact wrench.

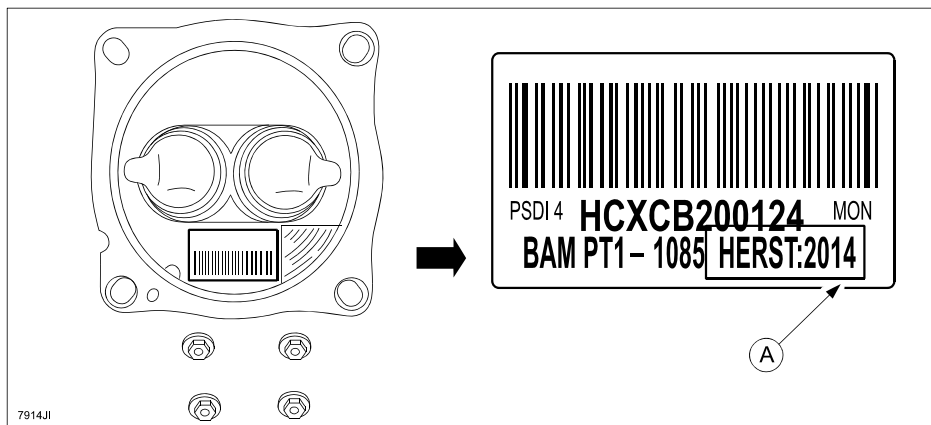


CAUTION:

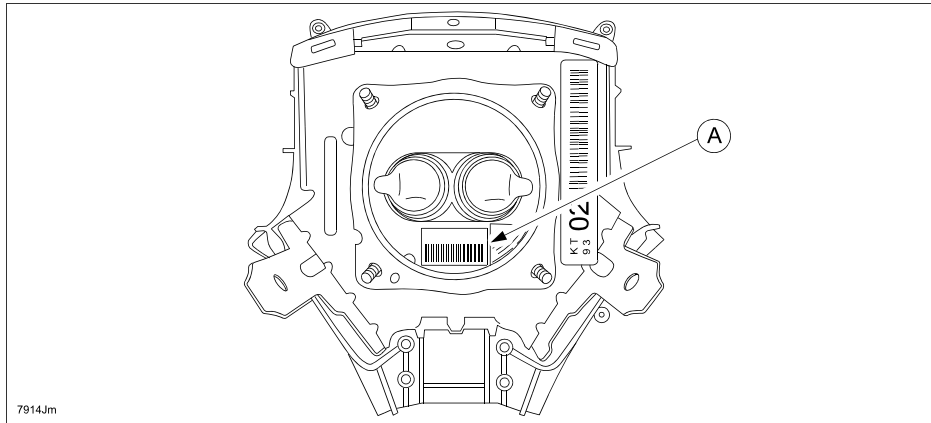
- DO NOT touch the bolts (A) or the cloth (B).
- DO NOT drop nuts or foreign materials in the air bag body.



3. Make sure that the installing inflator is a modified one by looking the description of “2014” on the label (A) as shown.

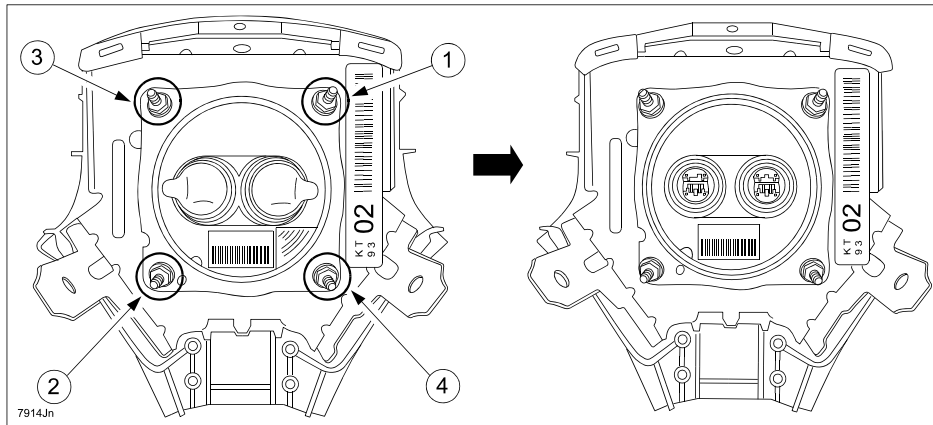


- Facing the side having the label (A) downward, carefully insert the modified inflator into the air bag body as shown



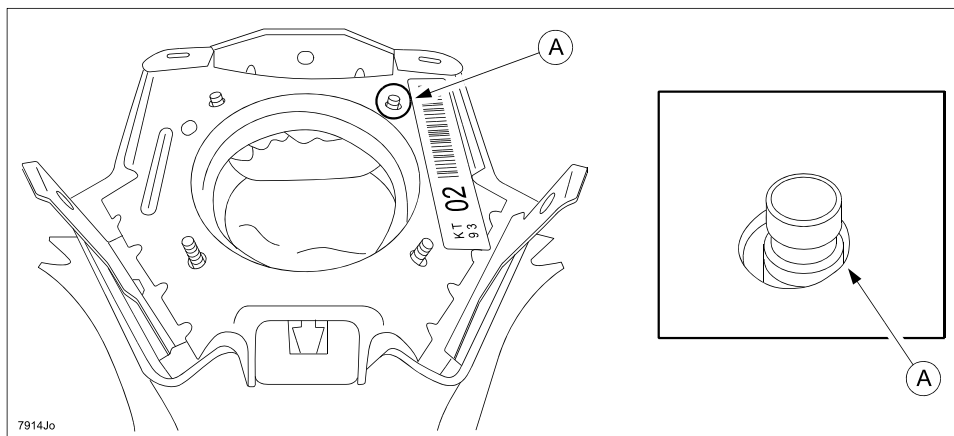
- Tighten the new nuts (with self-lock) finger tight at first, then tighten them to the specified torque in the order of (1) – (2) – (3) – (4) as shown.

Tightening Nut Torque: 3.9 ± 0.4 Nm (34 ± 3.5 in-lb)

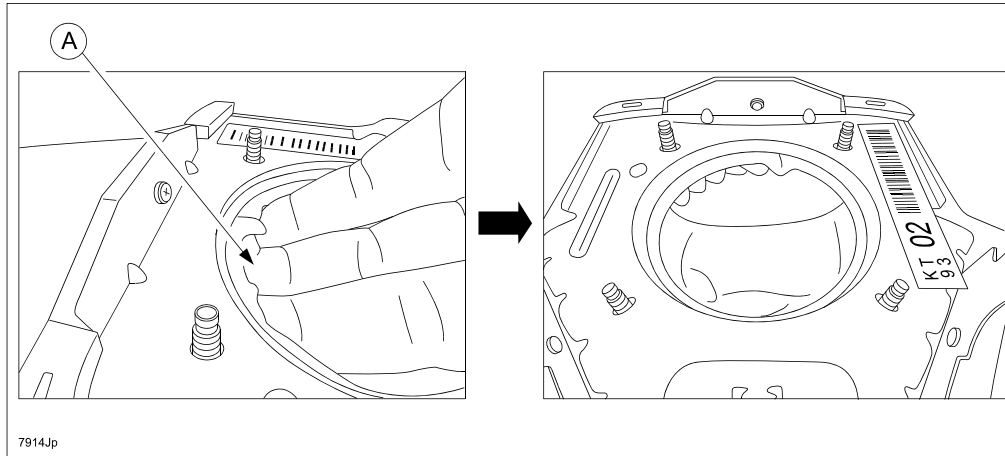


NOTE:

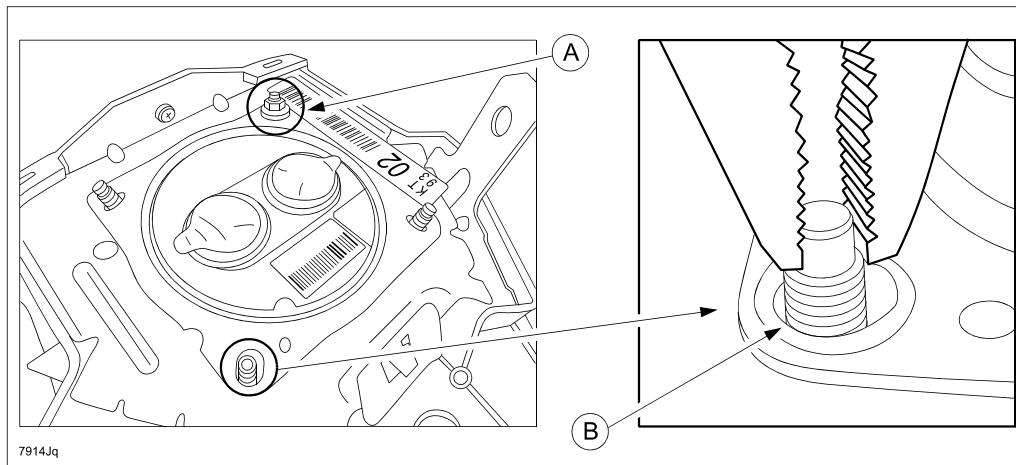
- Peel off the dust-proof seal and confirm the two terminals of red and yellow layouts correctly as shown in the right photo.
- In the event that it is difficult to install the nut because the bolt is not coming out enough (A), refer to the following steps:



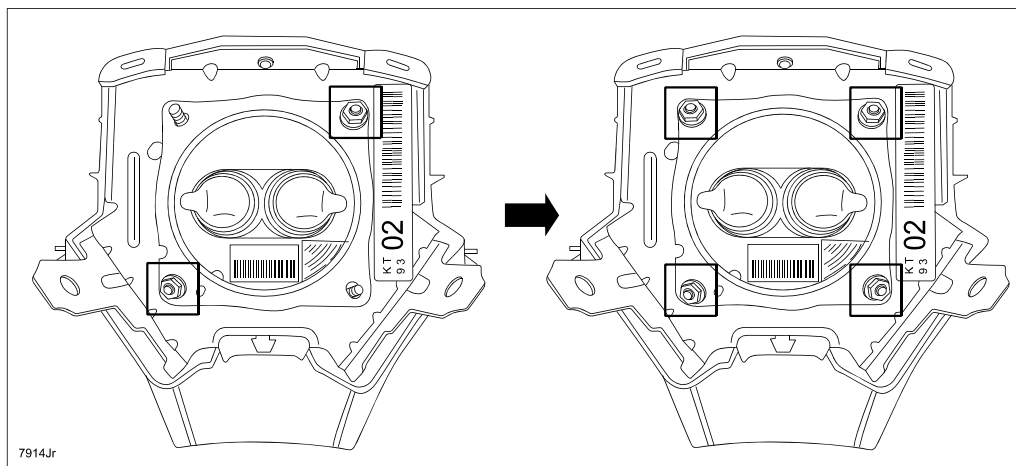
- a. Get out the bolts out as much as possible by pulling up on the bag ring by hand.



- b. Install one nut to one bolt (A), then pull out the next bolt diagonally from that one using needle-nose pliers (B), being careful not to damage the bolt threads.



- c. Install the nut to the bolt which has been pulled out with pliers, then install the other nuts to the two remaining bolts.

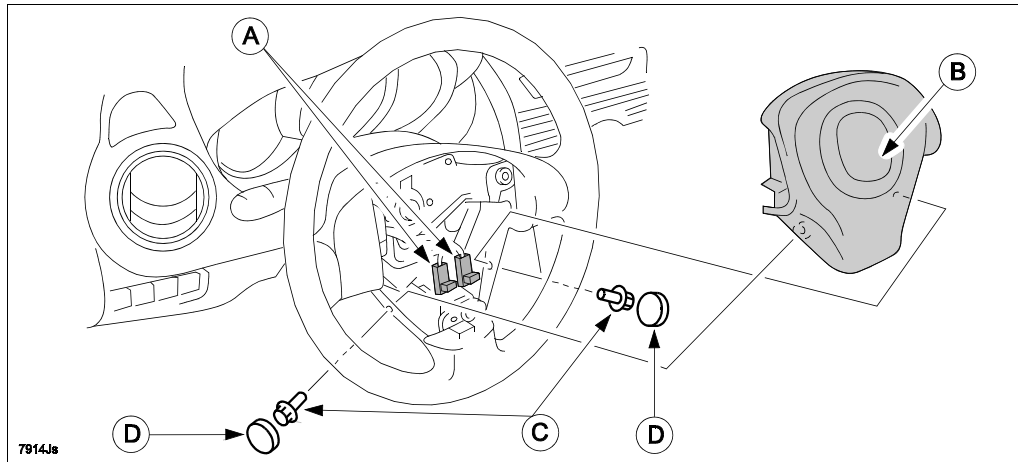


Air Bag Module Reinstallation:

1. Install the driver-side air bag module.
 - a. Re-connect the connectors (A) to air bag module, securely locking the connectors by depressing the stoppers on the connector back.
 - b. Install the air bag module (B).
 - c. Install the bolts (C).

Tightening Torque: 70 - 103 in-lbf. {81 - 119 kgf-cm, 7.9 - 11.7 Nm}

 - d. Install the covers (D).



2. Reconnect the negative battery cable.
3. Turn the ignition switch to the ON position.
4. Verify that the air bag system warning light illuminates for approx. 6 sec., then goes out.

NOTE: If the air bag system warning light does not operate in the manner described above, there is a malfunction in the system. Inspect the system following the on-board diagnostic system procedure according to MS3 online or the Workshop Manual (section 08 Restraints).

5. Re-enter the customer's preset radio stations.
6. Proceed to "C. CAMPAIGN LABEL INSTALLATION".

C. CAMPAIGN LABEL INSTALLATION

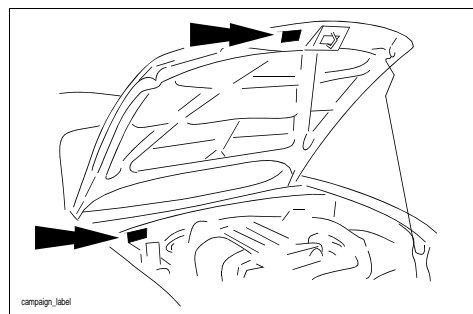
1. Fill out a blue "Campaign Label" (9999-95-065A-06) with Campaign No: "7914J", your dealer code, today's date.

CAMPAIGN LABEL	
CAMPAIGN NO:	_____
DEALER CODE:	_____
DATE:	/ /

P/N 9999-95-065A-06

1326b

2. Affix it to the hood or bulkhead as shown:



3. Return the vehicle to customer.