

Service Information

Mazda Motor Corporation

3-1, Shinchi, Fuchu-cho, Aki-gun
Hiroshima 730-8670, Japan
TEL : 81(82)287-5323
FAX : 81(82)287-5220



Category S	Repair Guidance	Ref. No. R044/12A	Page 1 of 8
Coverage <input type="checkbox"/> Distributor only <input checked="" type="checkbox"/> Please inform your dealers		Date Issued June 18, 2012	
Please convey this information to your <input type="checkbox"/> Director <input checked="" type="checkbox"/> General Manager <input checked="" type="checkbox"/> Warranty Dept. <input checked="" type="checkbox"/> Parts Dept. <input checked="" type="checkbox"/> Training Dept. <input checked="" type="checkbox"/> Field Rep.		Date Revised June 13, 2014	
Applicable Model CX-5 (KE)		Applicable Countries or Specifications Worldwide	

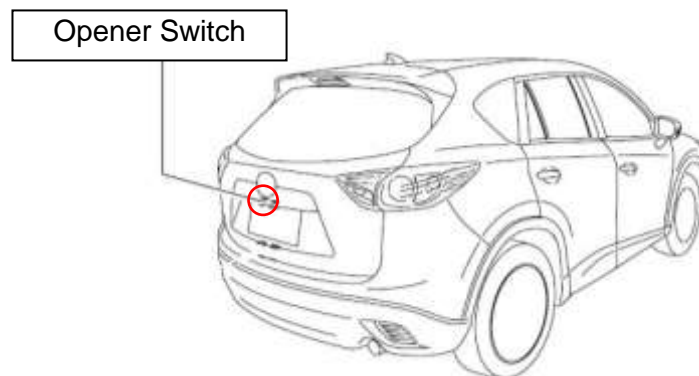
REVISED

Revision Note: Following the implementation of further mass-production change, the related information has been revised.

Subject: Liftgate Opener Switch Not Operate

DESCRIPTION

Some vehicles may exhibit that the liftgate does not open when the liftgate opener switch (hereafter called "opener switch") is pushed on.



CAUSE

1. The concern may be due to water entering in the connector of the opener switch during car washing with high pressure water or by condensation, which causes the connector terminals to get rusty.
2. As mass-production change, a water-proof sheet was additionally installed to cover the opener switch from water entry; however the sheet may not be installed correctly during production.

MASS PRODUCTION CHANGE

Use of the water-proof sheet has been discontinued; instead a water-proof protector has been installed to protect the opener switch.

NOTE: For the additional installation of water-proof protector, the shape of the rear harness No. 2 has also been changed. This change was implemented prior to installation of the water-proof protector.

Mass-Production Change Specifications

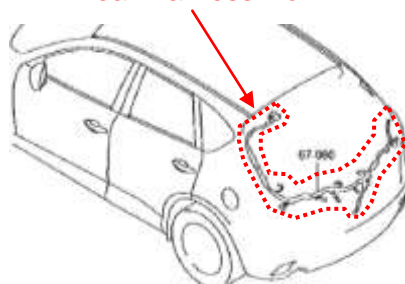
Item	Subject Vehicle			Modified Vehicle
	Vehicle A	Vehicle B	Vehicle C	Vehicle D
Water-proof <u>Sheet</u>	Not Equipped	Equipped	Equipped	Not Equipped
Rear Harness No.2	Old Type	Old Type	New Type	New Type
Water-proof <u>Protector</u>	Not Equipped			Equipped

Illustration

Water-proof sheet



Rear Harness No.2



Water-proof protector



■ Rear Harness No.2 (New shape)

NOTE: Preceding to the implementation of water-proof protector, the shape of the rear harness No.2 was changed.

NOTE: There are various designs of rear harness No.2 according to vehicle specifications as listed in the below table. Confirm the correct part number of the vehicle in repair by EPC.

No.	New	Old	No.	New	Old
1	KF61-67-060C	KF61-67-060B	11	KD77-67-060C	KD77-67-060B
2	KD45-67-060C	KD45-67-060B	12	KE78-67-060C	KE78-67-060B
3	KD53-67-060C	KD53-67-060B	13	KE86-67-060C	KE86-67-060B
4	KD47-67-060C	KD47-67-060B	14	KF15-67-060C	KF15-67-060B
5	KD62-67-060C	KD62-67-060B	15	KH24-67-060C	KH24-67-060B
6	KE66-67-060C	KE66-67-060B	16	KR90-67-060A	KR90-67-060
7	KD33-67-060C	KD33-67-060B	17	KR11-67-060A	KR11-67-060
8	KD37-67-060C	KD37-67-060B	18	KR14-67-060A	KR14-67-060
9	KE04-67-060C	KE04-67-060B	19	KS30-67-060A	KS30-67-060
10	KE08-67-060C	KE08-67-060B			

Note: No.17-19 China Production

REPAIR PROCEDURE

There are three types of vehicle categories depending on the mass-production change specifications. Use the applicable repair procedures according to the following tables.

Table : Repair Menu

Items	Parts	Vehicle A	Vehicle B	Vehicle C
Inspection of Rust Condition at connector terminals		(*) (Procedure A)		
(*) RUST at the connector terminals	Opener Switch	(Procedure B) Replace with a new one.		
	Rear Harness No.2	(Procedure C) Replace with a modified one.		(Procedure C) Replace with a new one (modified one).
	Water-proofness	(Procedure E) Install a new water-proof <u>protector</u> .	(Procedure E) Remove the old water-proof <u>sheet</u> and install a water-proof <u>protector</u> .	
(*) NO RUST at connector terminals	Opener Switch	(Procedure B) Replace with a new one.		
	Rear Harness No.2	The replacement is not necessary.		
	Water-proofness	(Procedure D) Install a new water-proof <u>sheet</u> .	(Procedure D) Remove the old water-proof <u>sheet</u> and install a new one.	(Procedure E) Remove the old water-proof <u>sheet</u> and install a water-proof <u>protector</u> .

Note: (*) Inspect for rust occurrence at the connector terminals by the procedure A.

Note: A water-proof protector can NOT be installed to the old rear harness No.2.

VIN Ranges

Note:

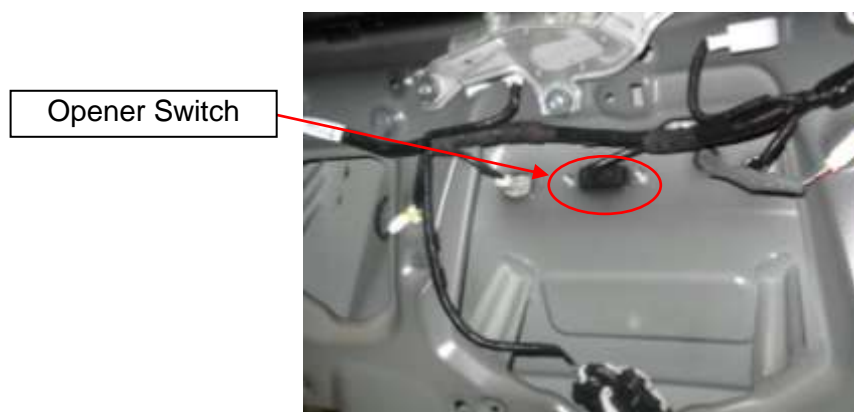
- ※b indicates the ending VIN of vehicles equipped with the **old rear harness No.2**.
- ※c indicates the beginning VIN of vehicles equipped with the **new rear harness No.2**.
- Since there are various designs of rear harness No.2 and their implementation dates are all different, it is difficult to list all the applicable VIN ranges. Please therefore confirm by EPC which rear harness No.2 is installed on the vehicle in repair, and perform the applicable repair. The old and new part numbers of rear harness No.2 are listed in the previous page.

		Vehicle A	Vehicle B	Vehicle C
EU Spec.	JMZ KE**** **	100001-120270	120271 - ※b	※c - 251722
UK Spec.	JMZ KE**** **			※c - 163830
Israel Spec.	JMZ KE**** **	100001-108517	108518 - ※b	※c - 225797
US Spec.	JM3 KE**** **	100001-119967	119968 - ※b	※c - 398856
ADR Spec.	JM0 KE**** **	100001-108517	108518 - ※b	※c - 225797
General Spec.	JM6 KE**** **			
	JM8 KE**** **			
Algeria Spec.	KE**** **			
China spec.	JM7 KE **** **			
China Production	LVR HD**** **	-	TBD	TBD

PROCEDURE

A. Inspection of Rust Occurrence at connector terminals (For all vehicles A, B and C)

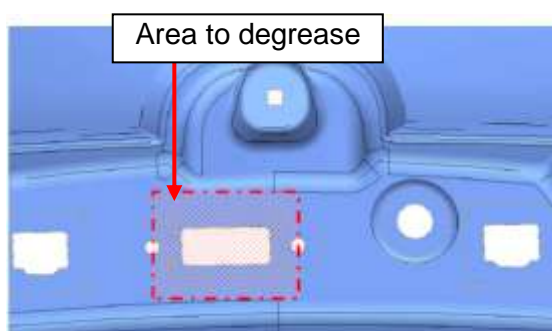
1. Remove the liftgate trim. Refer to Workshop Manual [LIFTGATE LOWER TRIM INSTALLATION/REMOVAL].
2. Disconnect the connector from the opener switch and check for any water intrusion and any rust on the terminals in the connector at the opener switch and at the rear harness No.2.



B. Replacement of Opener Switch

(For all vehicles A, B and C regardless rust occurrence or not)

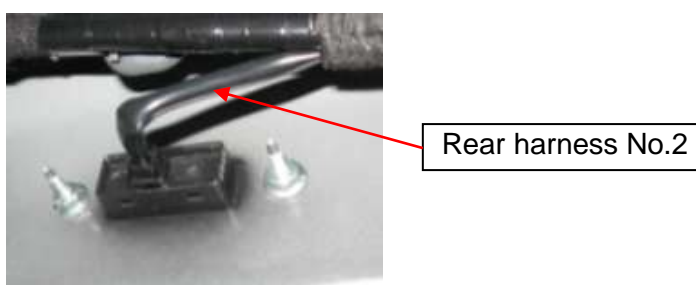
1. Remove the opener switch. Refer to Workshop Manual [LIFTGATE OPENER SWITCH REMOVAL/INSTALLATION].
2. Degrease the liftgate panel around the area where the opener switch is installed to.



3. Install a new opener switch.

C. Replacement of Rear Harness No.2 with a modified one. (For Vehicle A, B and C with RUST occurrence)

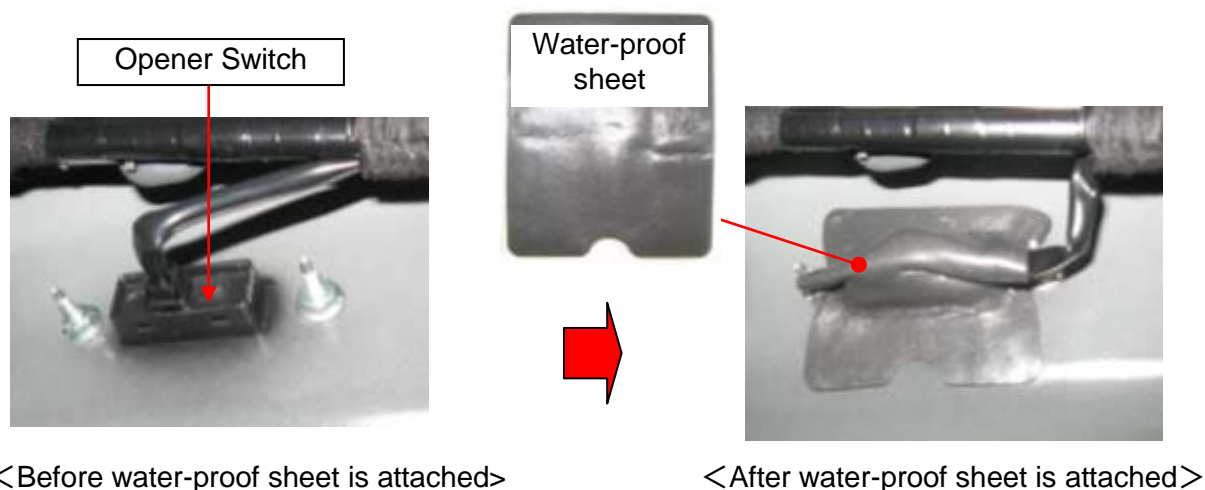
1. Replace the rear harness No.2 with a new one (modified one)



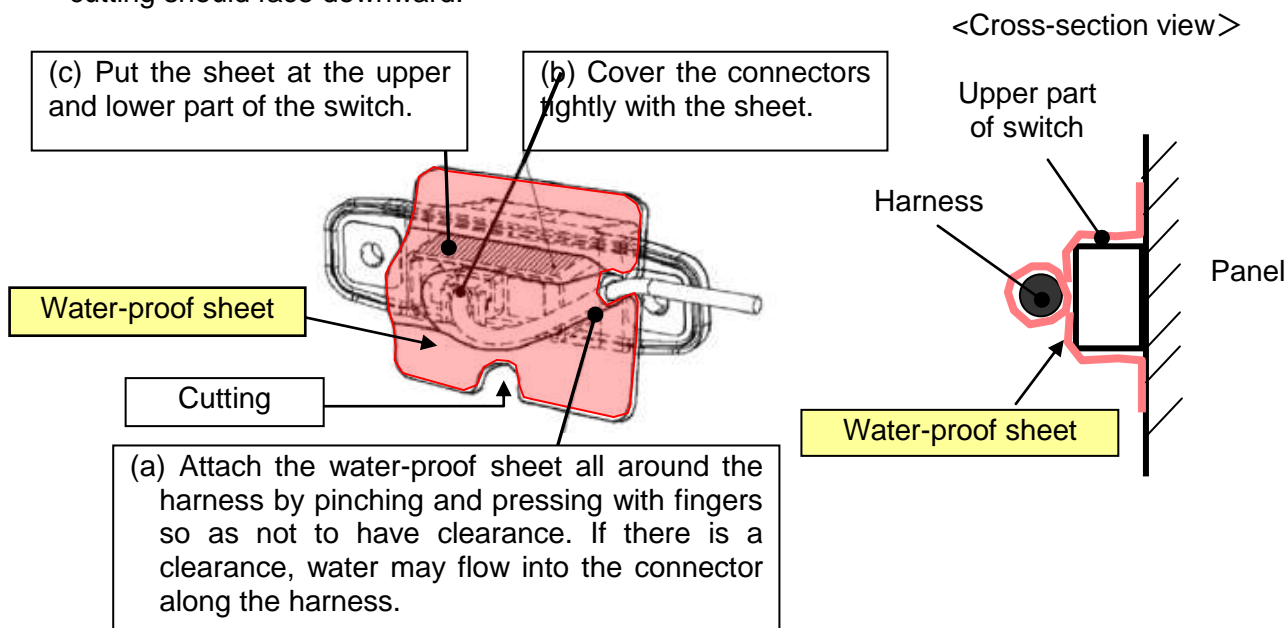
D. Installation of Water-proof Sheet

(For Vehicle A and B with NO RUST occurrence)

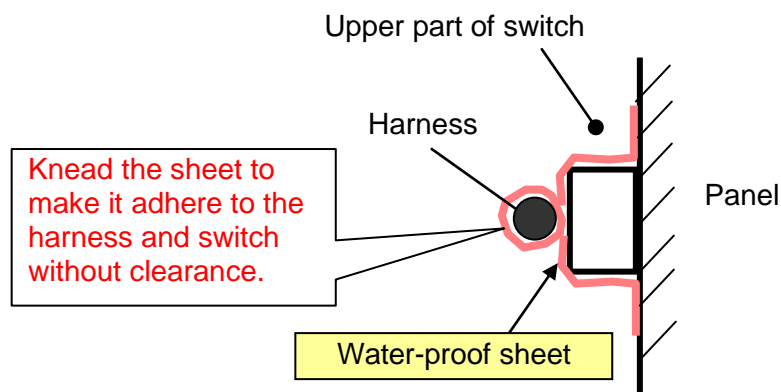
Note: Remove the old water-proof sheet for Vehicle B.



1. Attach the water-proof sheet in the order of (a)→(b)→(c) to cover the opener switch. The cutting should face downward.



2. Knead the water-proof sheet attached to the rear harness No.2 with your fingers so that the sheet adheres to the harness and switch without clearance to avoid water intrusion.

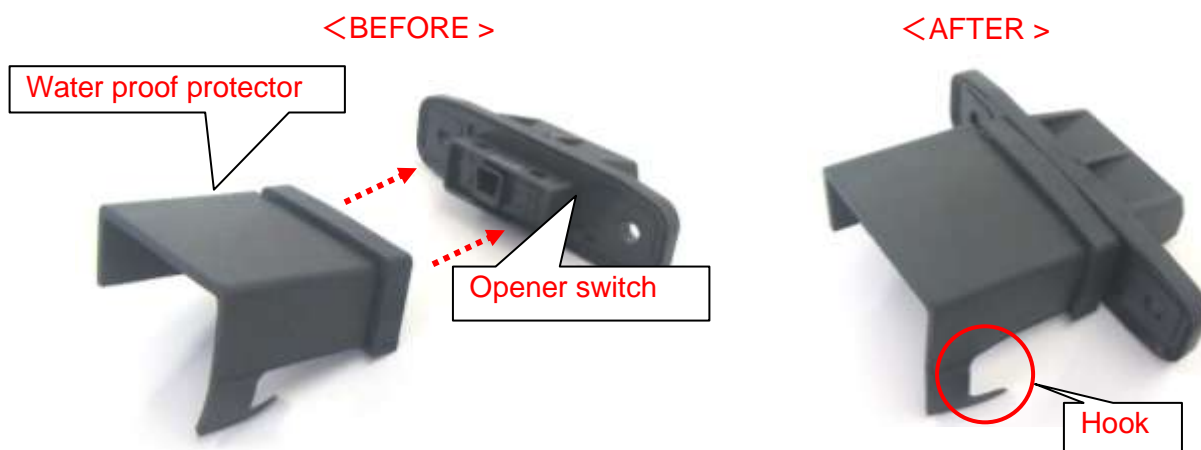


E. Installation of Water-proof Protector

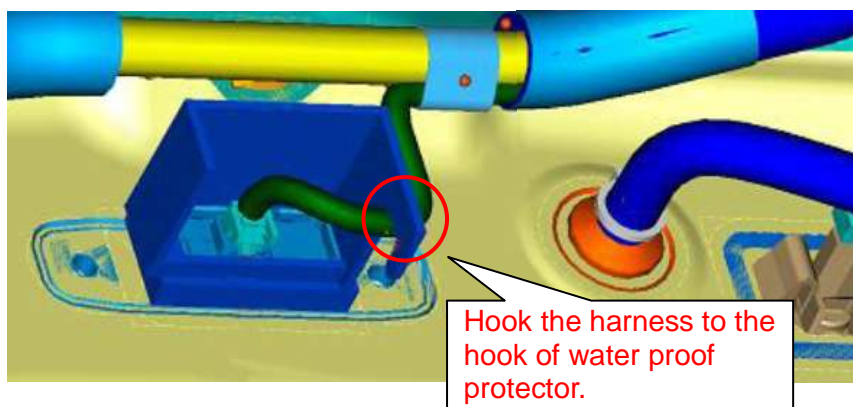
(For Vehicle A and B with RUST occurrence, and Vehicle C regardless rust occurrence or not.)

Note: Remove the old water-proof sheet for Vehicle B and C.

1. Install the water-proof protector over the opener switch.
※The pictures show the protector and opener switch not being installed to the vehicle.



2. Hook the rear harness No.2 to the hook of water-proof protector and connect the connector.



PARTS INFORMATION

Part Number	Part Name	Q'ty	Note	
			Rear Harness No.2	
			If NOT RUSTED.	If RUSTED
KD53-62-4B0	Opener Switch	1	For Vehicle A, B and C	
BC1B-58-862	Water-proof sheet	1	For Vehicle A, B	-
KD53-62-4B2	Water-proof protector	1	For Vehicle C	For Vehicle A, B and C
****-67-060*	Rear Harness No.2	1	-	For Vehicle A, B and C

Note: If you need to replace the rear harness No.2 (****-67-060*), please check the part number applicable to the vehicle in repair by parts catalog.

Note: It may take some time to obtain the rear harness No.2.

Note: Water-proof protector compatibility

		Water-proof <u>Sheet</u>	Water-proof <u>Protector</u>
Rear Harness No.2	Old	○	✗
	New	○	○

○: applicable

✗: not applicable

WARRANTY INFORMATION

Note: Select 1 or 2 depending on the rust occurrence condition, and then select one operation number applicable to the vehicle type and specification.

1. There is NO RUST at the terminals of rear harness No.2.

Assembly group	S - Body
Subassembly group	05 - BONNET (HOOD) & TRUNK LID
Symptom Code	61
Damage Code	9Y
Causal Part No.	KD53-62-4B0
Q'ty	1
Operation No. & Labor Hours	XXK58ARX & 0.5H (Vehicle A, B / with i-stop) XXK58BRX & 0.4H (Vehicle C / with i-stop) XXK58CRX & 0.4H (Vehicle A,B ,C / without i-stop)
Period Covered	Normal warranty period

Note: For BC1B-58-862 (Vehicle A, B) and KD53-62-4B2 (Vehicle C), please submit it as related parts.

2. There is RUST at the terminals of rear harness No.2.

Assembly group	S - Body
Subassembly group	05 - BONNET (HOOD) & TRUNK LID
Symptom Code	61
Damage Code	9Y
Causal Part No.	KD53-62-4B0
Q'ty	1
Operation No. & Labor Hours	XXK59ARX & 0.6H (with i-stop) XXK59BRX & 0.5H (without i-stop)
Period Covered	Normal warranty period

Note: For KD53-62-4B2 (Vehicle A, B and C) and ****-67-060* (Vehicle A, B and C), please submit it as related parts.

Ryu Shimizugawa
Manager,
Technical Information Gr.
Technical Service Dept.
Mazda Motor Corporation
2C32104040 (MC Internal Use)