

Service Information

Mazda Motor Corporation

3-1, Shinchi, Fuchu-cho, Aki-gun
Hiroshima 730-8670, Japan
TEL : 81(82)287-5323
FAX : 81(82)287-5220



Category S	Repair Guidance	Ref. No. R001/14 B	Page 1 of 4
Coverage <input type="checkbox"/> Distributor only <input checked="" type="checkbox"/> Please inform your dealers		Date Issued January 6, 2014	
Please convey this information to your <input type="checkbox"/> Director <input checked="" type="checkbox"/> General Manager <input checked="" type="checkbox"/> Warranty Dept. <input checked="" type="checkbox"/> Parts Dept. <input checked="" type="checkbox"/> Training Dept. <input checked="" type="checkbox"/> Field Rep.		Date Revised July 29, 2014	
Applicable Model Mazda3(BM)		Applicable Countries or Specifications Worldwide	

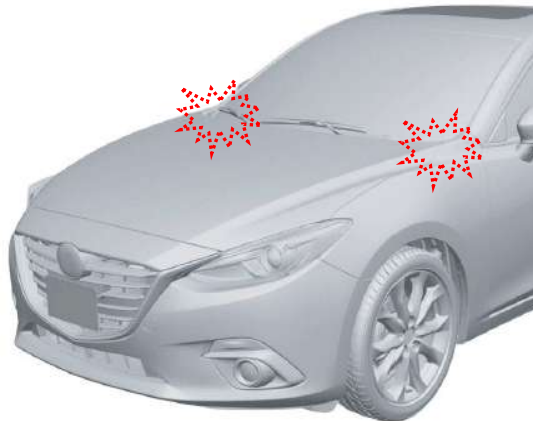
Revised

"MASS PRODUCTION CHANGE", "BEGINNING VIN & DATE OF MODIFICATION" and "REPAIR PROCEDURE" have been changed.

Subject: Rattle noise from bottom of A-pillar

DESCRIPTION

When driving on rough roads or over bumps, some vehicles may exhibit a rattle noise from the bottom of the A-pillar.



CAUSE

The cowl upper plate and/or dash upper panel interferes with the wiper bracket causing a noise.

MASS PRODUCTION CHANGE

TBD

~~Spot-welding locations to the dash and cowl assembly have been optimized to eliminate this concern.~~

BEGINNING VIN & DATE OF MODIFICATION

TBD

~~US Spec.~~

~~From JM1BM**** ** 189736 March 01, 2014~~

~~EC Spec.~~

~~From JMZBM**** ** 140923 March 01, 2014~~

~~Israel Spec.~~

~~From JMZBM**** ** 116456 March 01, 2014~~

~~ADR Spec.~~

~~From JM0BM**** ** 116456 March 01, 2014~~

~~General Spec.~~

~~From JM6BM**** ** 116456 March 01, 2014~~

~~From JM7BM**** ** 116456 March 01, 2014~~

REPAIR PROCEDURE

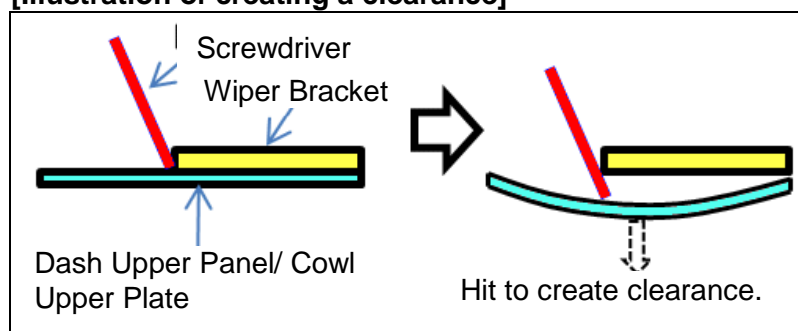
When you encounter a customer complaint on this concern, create a clearance between the affected panels. (Between wiper bracket~Cowl upper plate and between wiper bracket~dash upper panel) by using the following procedure.

Procedure:

1. Remove **the bonnet and** the cowl grille according to workshop manual.
2. Place the tip of a covered ^(*) flat-blade screwdriver between two panels at joint. (Wiper Bracket~Cowl Upper Plate and Wiper Bracket~Dash Upper Panel) Then hit the head of the screwdriver by hammer to create a clearance of approx. 0.5mm between the two panels.

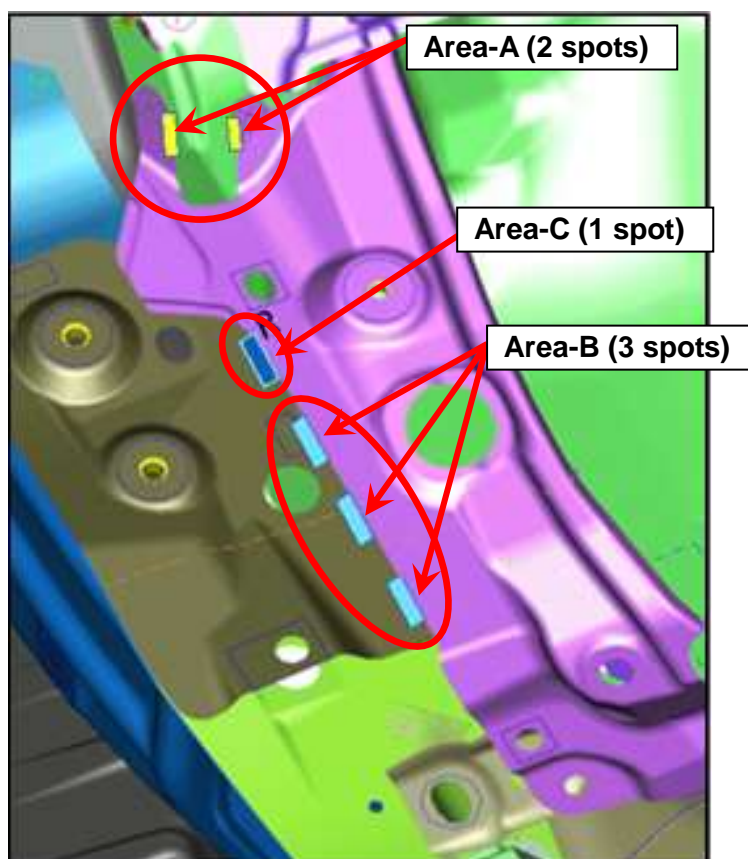
^(*) **Note:** To avoid damaging the paint, wrap protection tape around the tip of the screwdriver. If there are scratches on the panels, apply appropriate corrosion protection primer.

[Illustration of creating a clearance]

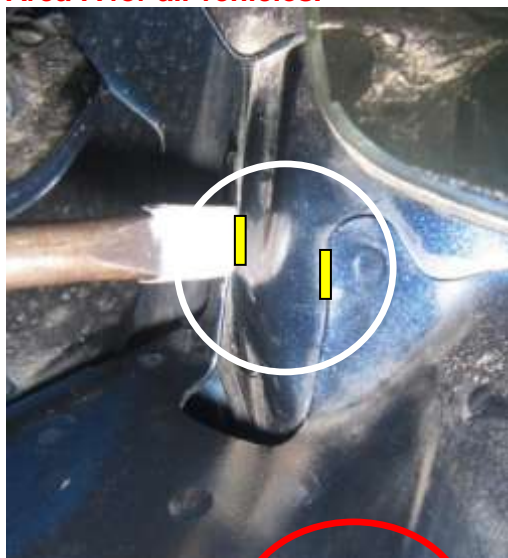


[Locations to create a clearance]

- Area-A and B: Create a clearance for all vehicles
- Area-C: Create a clearance for vehicles with the indicated limited VIN ranges.



Area-A for all vehicles.



Area-B for all vehicles.

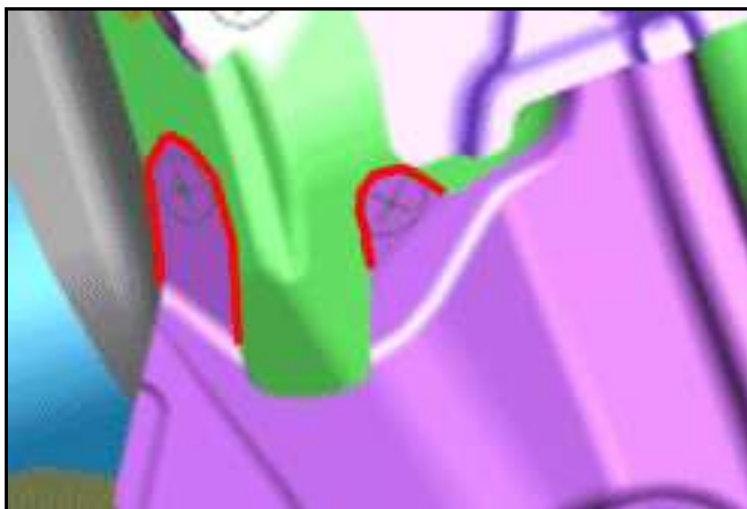


Area-C for vehicles with the following VIN ranges

US Spec.	From JM1BM**** ** 100001 - 189735
EC Spec.	From JMZBM**** ** 100001 - 140922
Israel Spec.	From JMZBM**** ** 100001 - 116455
ADR Spec.	From JM0BM**** ** 100001 - 116455
General Spec.	From JM6BM**** ** 100001 - 116455
	From JM7BM**** ** 100001 - 116455



3. Apply a body adhesive to the Area-A between the wiper bracket and the dash upper panel (two locations shown in the figure).



4. Re-install the cowl grille and the bonnet.

WARRANTY INFORMATION

Symptom Code	82
Damage Code	98
Causal Part No.	BHR1 53 5DX (Wiper Bracket)
Q'ty	0
Operation No. & Labor Hours	XXK8PXRX & 0.6 H (One side or Both sides)
Period Covered	Normal warranty period

Note: Claim adhesive sealant as related part.

Ryu Shimizugawa
Manager, Technical Information Gr.
Technical Service Dept.
Mazda Motor Corporation
2D91910028 (MC Internal Use)