

2014 Mazda3, 2014 Mazda6 WITH MRCC

VEHICLE SPEED CHANGE WITH MAZDA RADAR CRUISE CONTROL (MRCC)

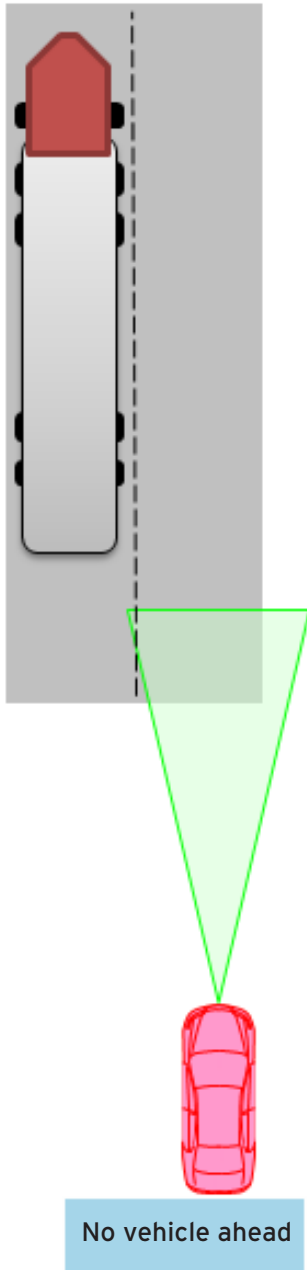
Some customers may complain that the vehicle speed changes automatically when driving with MRCC. This is not a defect of the MRCC system. The MRCC system changes vehicle speed when switching between Constant Speed Mode and Headway Control Mode.

MRCC operation mode changes depending on the vehicle ahead. If there is a vehicle ahead, MRCC changes to headway control mode; and if there is no vehicle ahead, MRCC changes to constant speed mode.

The following are examples of normal Constant Speed Mode and Headway Control Mode.

1. Driving close to the vehicle in the nearby lane which runs near center line. (Change from Constant Speed Mode to Headway Control Mode and speed reduction.)

Constant Speed Mode

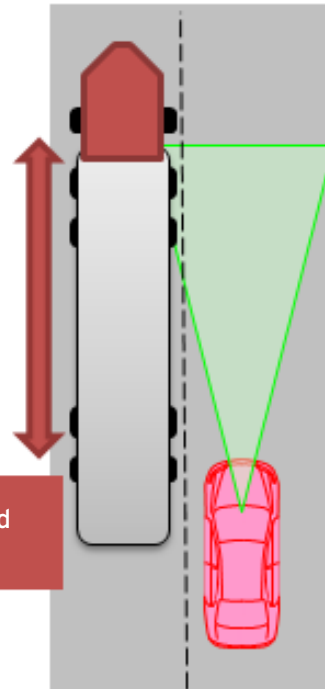


Headway Control Mode

Close to vehicle
in nearby lane

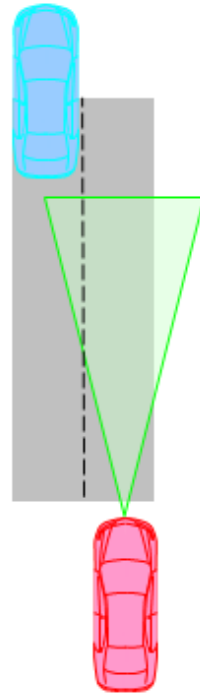


Vehicle speed
reduced



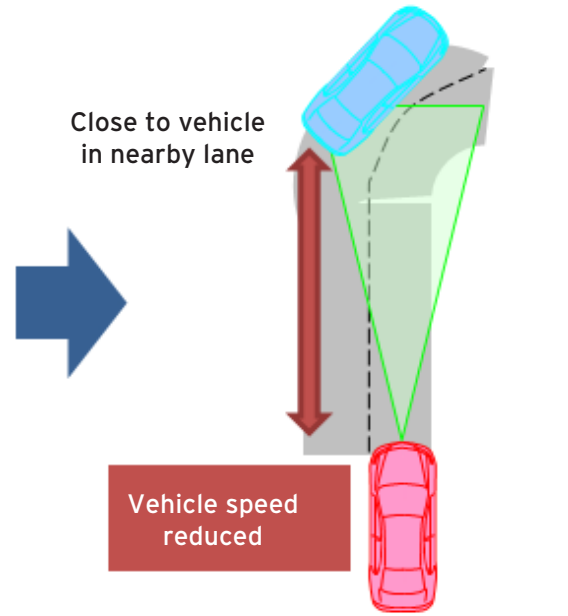
2. On a winding road, the vehicle in the nearby lane is entering the radar sensing area. (Change from Constant Speed Mode to Headway Control Mode and speed reduction.)

Constant Speed Mode



No vehicle ahead

Headway Control Mode

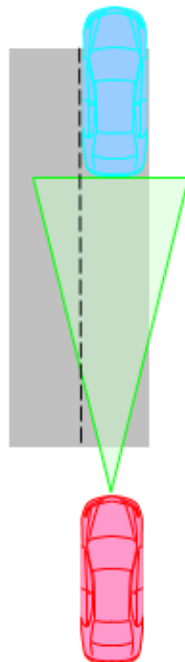


Vehicle speed reduced

The vehicle in nearby lane turns the curve on the road

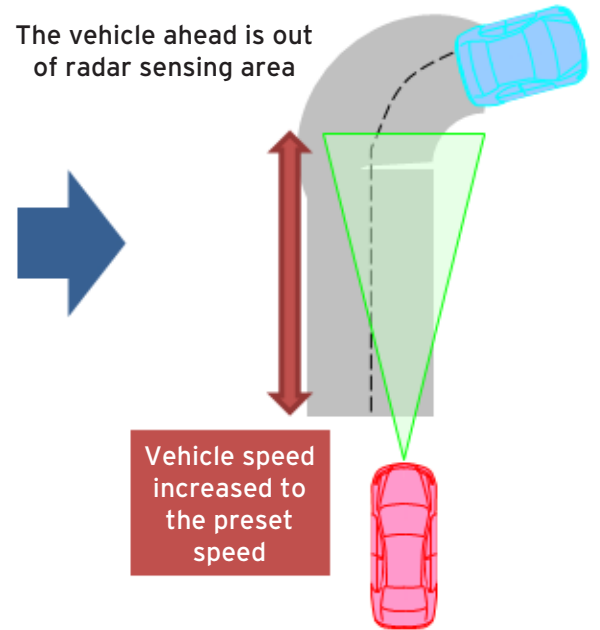
3. On a winding road, the vehicle running ahead is leaving the radar sensing area. (Change from Headway Control Mode to Constant Speed Mode and speed increase to preset speed.)

Headway Control Mode



Follow the vehicle ahead

Constant Speed Mode



Vehicle speed increased to the preset speed

The vehicle in the nearby lane turns the curve on the road