

Service Information

Mazda Motor Corporation

3-1, Shinchi, Fuchu-cho, Aki-gun
Hiroshima 730-8670, Japan
TEL : 81(82)287-5323
FAX : 81(82)287-5220



Category D	Technical	Ref. No. E002/14	Page 1 of 3
Coverage <input type="checkbox"/> Distributor only <input checked="" type="checkbox"/> Please inform your dealers		Date Issued January 7, 2014	
Please convey this information to your <input type="checkbox"/> Director <input checked="" type="checkbox"/> General Manager <input checked="" type="checkbox"/> Warranty Dept. <input checked="" type="checkbox"/> Parts Dept. <input checked="" type="checkbox"/> Training Dept. <input checked="" type="checkbox"/> Field Rep.		Date Revised	
Applicable Model All models with SKYACTIV-D 2.2		Applicable Countries or Specifications Europe, ADR	

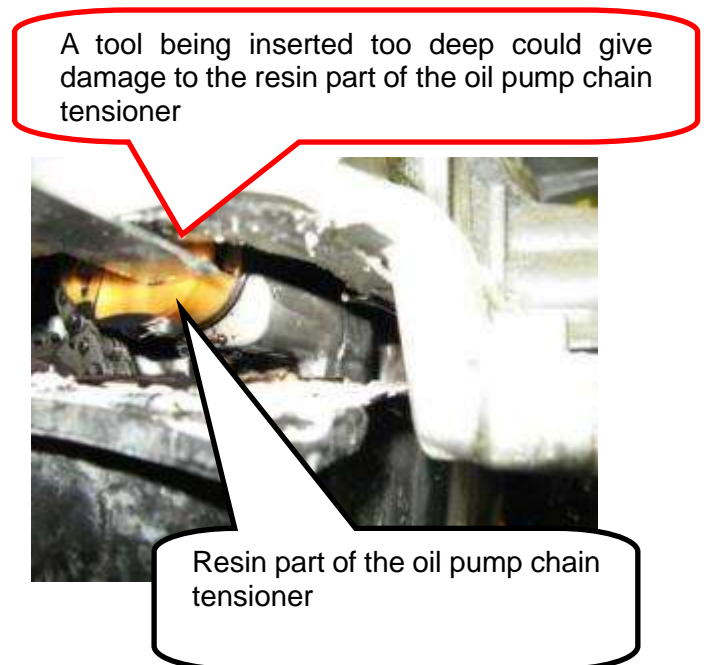
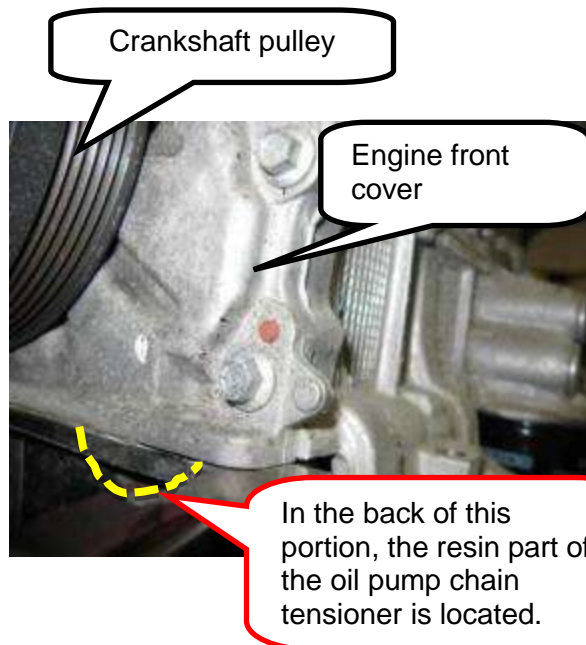
Subject: Service Caution for Oil Pan Removal and Installation

DESCRIPTION

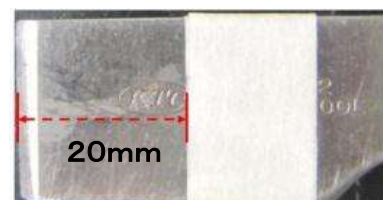
This Service Information is to advise you on service caution for Oil pan removal and installation of SKYACTIV-D 2.2.

1. Oil Pan Removal Caution

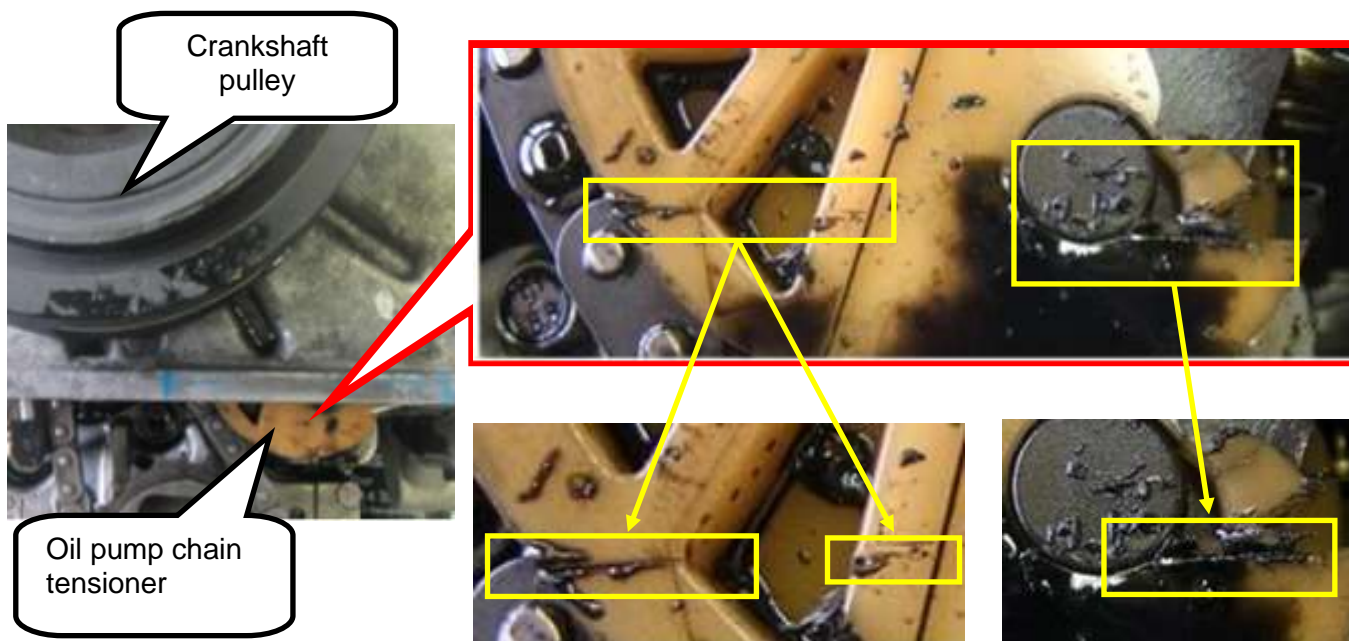
When separating the oil pan from the engine front cover using a cutting tool, DO NOT insert the tool deeper than 20mm, or it could damage the resin part of the oil pump chain tensioner. Refer to the location of the resin part of oil pump chain tensioner in the below photos and the sample photos of the damaged resin on the next page.



Note: In order to prevent inserting the cutting tool too deep, put a masking tape at the mark of 20mm from the edge of the tool as shown in the picture.



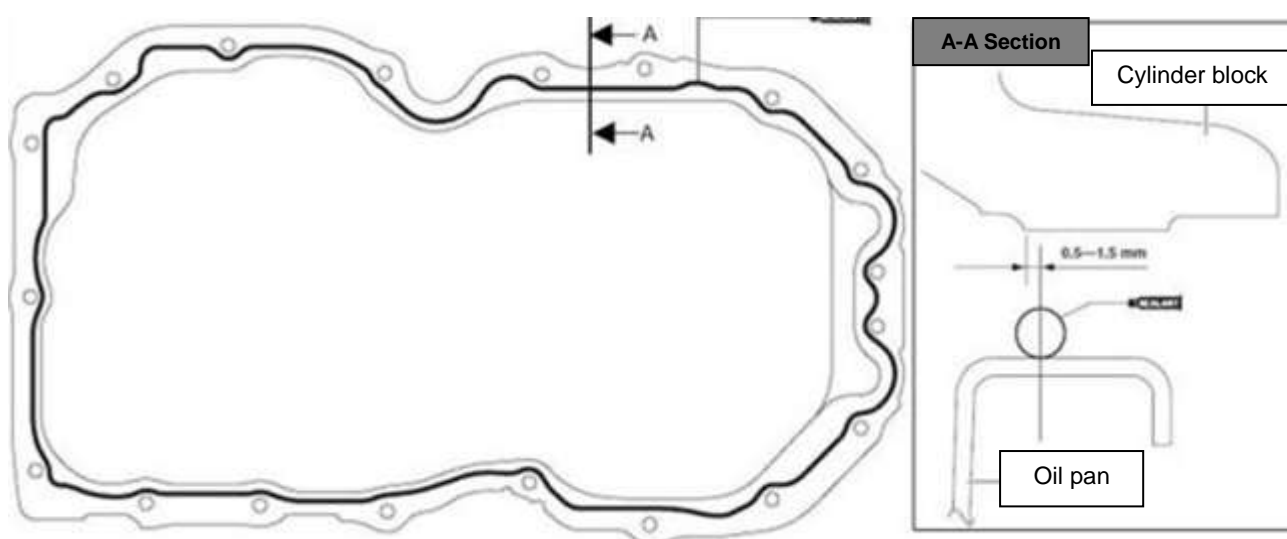
Samples of damaged resin caused by the cutting tool inserted too deep.



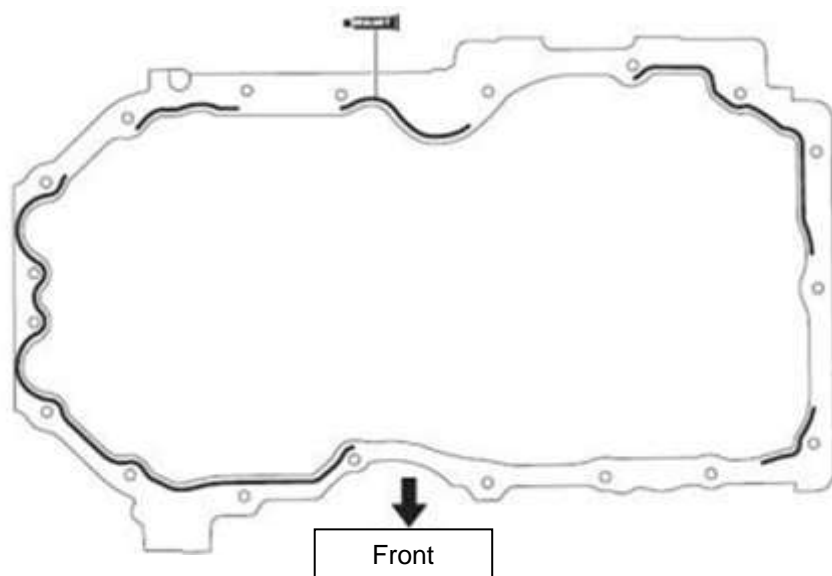
2. Oil Pan Installation Caution

When installing the oil pan, apply silicone sealant properly on both sides, the oil pan and the cylinder block as shown in the below pictures. If the silicone sealant application position is incorrect or if there is any break in the application track, engine oil leakage will occur due to poor sealing. It takes an hour to harden the silicone sealant completely. Therefore, refill the engine oil after more than 1 hour upon sealant application.

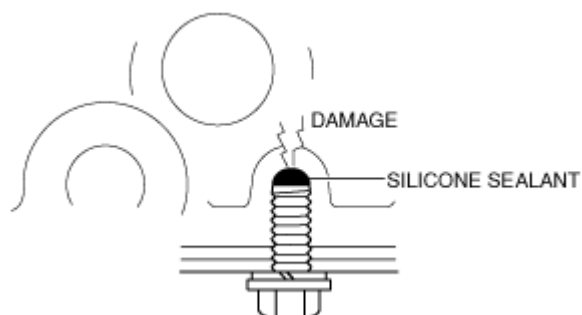
Oil pan



Cylinder block



Note: Remove any silicone sealant which oozes out into an oil pan installation bolt hole.
If silicone sealant penetrates an oil pan installation bolt hole, the cylinder block could become damaged.



Ryu Shimizugawa
Manager, Technical Information Gr.
Technical Service Dept.
Mazda Motor Corporation
2D31212023 (MC Internal Use)