

Service Information

Mazda Motor Corporation

3-1, Shinchi, Fuchu-cho, Aki-gun
Hiroshima 730-8670, Japan
TEL : 81(82)287-5323
FAX : 81(82)287-5220

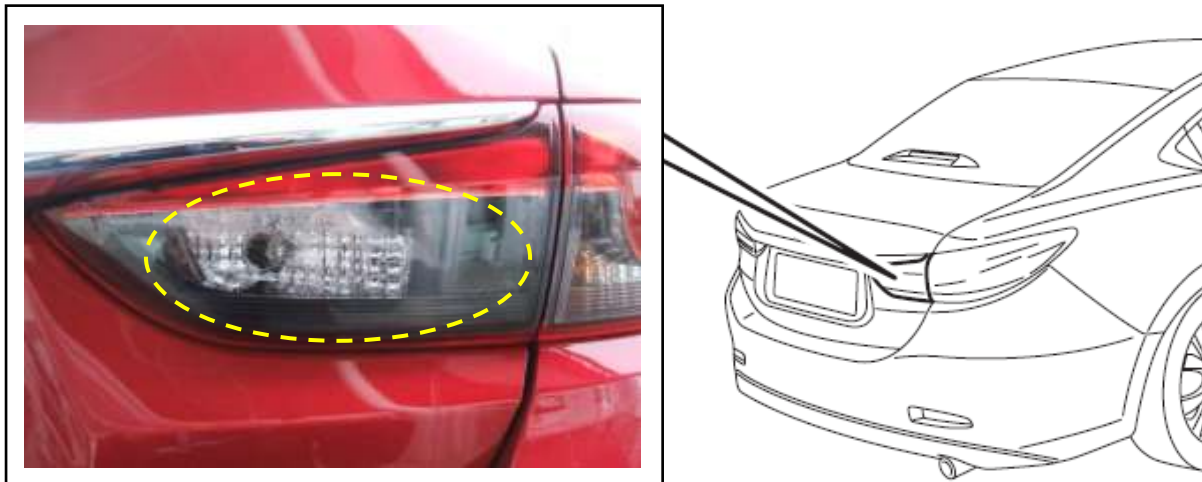


Category T	Repair Guidance	Ref. No. R090/13	Page 1 of 3
Coverage <input type="checkbox"/> Distributor only <input checked="" type="checkbox"/> Please inform your dealers		Date Issued November 7, 2013	
Please convey this information to your <input type="checkbox"/> Director <input checked="" type="checkbox"/> General Manager <input checked="" type="checkbox"/> Warranty Dept. <input checked="" type="checkbox"/> Parts Dept. <input checked="" type="checkbox"/> Training Dept. <input checked="" type="checkbox"/> Field Rep.		Date Revised	
Applicable Model Mazda6 (GJ) Sedan		Applicable Countries or Specifications Europe, Russia	

Subject: Water Entry into Trunk Lid Light at high pressure car washing

DESCRIPTION

Some vehicles may exhibit a condition that water enters into the trunk lid light while washing the vehicle with a high pressure cleaner.



CAUSE

Water enters through the trunk lid light gasket and the body panel due to a lack of sealing performance against the usage of high pressure cleaner.

MASS PRODUCTION CHANGE

TBD

BEGINNING VIN & DATE OF MODIFICATION

EU Spec.

JMZ GJ ***** TBD

REPAIR PROCEDURE

-OUTLINE-

Replace the trunk lid light with a new one. At this time, remove and discard the gasket attached to the new trunk lid light and use a modified gasket newly established as a service part instead.

-DETAILS-

1. Verify the symptom of customer concern whether it is "Water Entry" or "Dew Condensation".

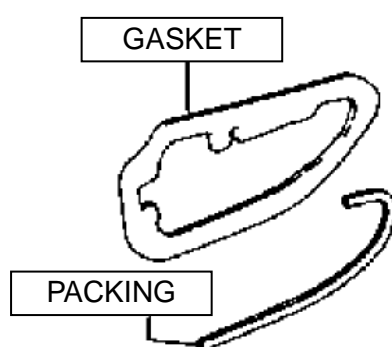
In case of "Dew Condensation"

DO NOT replace the trunk lid light. Explain to the customer that this is a natural phenomenon and not a quality defect. Refer to the Service Information E006/09 "Foggy Lens (Condensation) of Headlight, Rear Combination Light and Other Lamps"

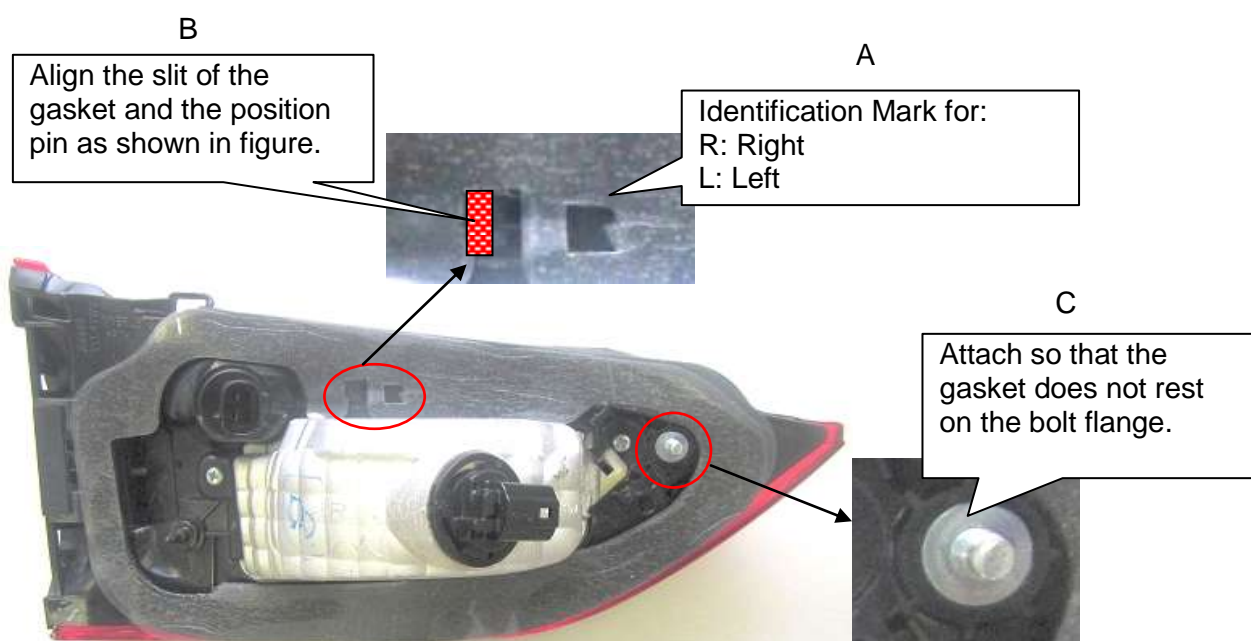
In case of "Water Entry"

Go to step 2.

2. Remove the trunk lid light from the vehicle according to the instructions in the Workshop Manual "TRUNK LID LIGHT REMOVAL/INSTALLATION".
3. Remove the gasket from the new trunk lid light. Remove the packing as well if attached. Discard them.



4. Attach the gasket (modified service part) to the new trunk lid light.
Note: A double-sided adhesive tape is attached to both sides of the gasket. Peel off the release paper before attaching the gasket.
Note: Attach the gasket taking note of information A to C in the figure.
Note: It is not necessary to install the packing.



5. Peel off the release paper (at body panel side) from the gasket and install the trunk lid light to the vehicle according to the instructions in the Workshop Manual "TRUNK LID LIGHT REMOVAL/INSTALLATION".

PARTS INFORMATION

Part Number	Part Name	Q'ty	Remark
GHY1-51-3H8	GASKET (RH)	1	Newly established Service Part
GHY1-51-3J8	GASKET (LH)	1	Newly established Service Part
GHK1-51-3F0B	TRUNK LID LIGHT (RH)	1	—
GHK2-51-3G0B	TRUNK LID LIGHT (LH)	1	—

WARRANTY INFORMATION

Assembly group	T – Body Electrical
Subassembly group	03 - EXTERIOR LIGHTING SYSTEM
Symptom Code	79
Damage Code	9F
Causal Part No.	GHY1-51-3H8 or GHY1-51-3J8
Q'ty	1
Operation No. & Labor Hours	<ul style="list-style-type: none"> ■ with i-stop <ul style="list-style-type: none"> XXJE3XRX & 0.4H (One side) XXJE4XRX & 0.5H (Both sides) ■ without i-stop <ul style="list-style-type: none"> XXJE5XRX & 0.3H (One side) XXJE6XRX & 0.4H (Both sides)
Period Covered	Normal warranty period

Note: If both sides of trunk lid lights should be replaced, prior approval is necessary according to current prior approval policy (MME-W004/09B).

Ryu Shimizugawa
 Manager, Technical Information Gr.
 Technical Service Dept.
 Mazda Motor Corporation
 2D31212023 (MC Internal Use)