

Service Information

Mazda Motor Corporation

3-1, Shinchi, Fuchu-cho, Aki-gun
Hiroshima 730-8670, Japan
TEL : 81(82)287-5323
FAX : 81(82)287-5220



Category P	Repair Guidance	Ref. No. R105/13	Page 1 of 2
Coverage <input type="checkbox"/> Distributor only <input checked="" type="checkbox"/> Please inform your dealers		Date Issued December 12 , 2013	
Please convey this information to your <input type="checkbox"/> Director <input checked="" type="checkbox"/> General Manager <input checked="" type="checkbox"/> Warranty Dept. <input checked="" type="checkbox"/> Parts Dept. <input checked="" type="checkbox"/> Training Dept. <input checked="" type="checkbox"/> Field Rep.		Date Revised	
Applicable Model Mazda6(GJ)		Applicable Countries or Specifications Europe	

Subject: Front Brake Judder

DESCRIPTION

Some customers may express a concern of vibration with the steering wheel, brake pedal and/or front seat when depressing the brake pedal at the vehicle speed of 80km/h - 130km/h.

CAUSE

Brake pad mark causes the DTV(Disc thickness variation) to increase.

MASS PRODUCTION CHANGE

The material of front brake pad has been changed.

BEGINNING VIN & DATE OF MODIFICATION

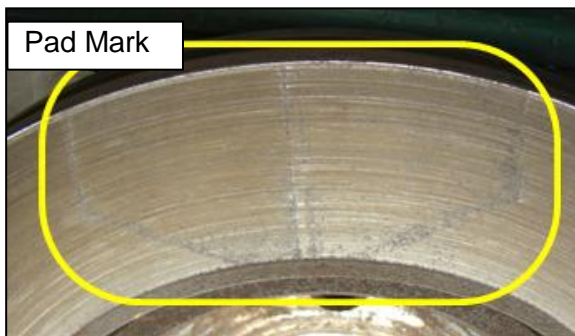
JMZ GJ** **** 158746

November 14, 2013

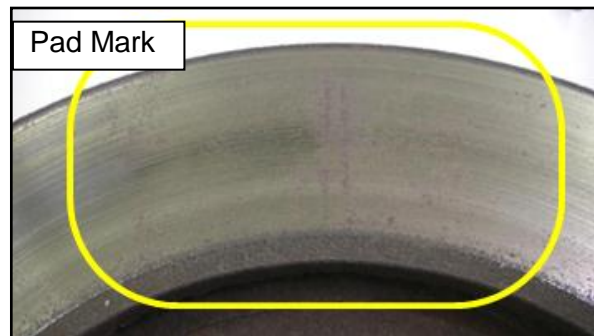
REPAIR PROCEDURE

When you encounter a customer complaint on this concern, inspect if there are pad marks on the disc plate surfaces first. If there are pad marks, repair as per the procedure below.

Initial pad mark



After being exposed to excessive heat generation, pad mark changes in its color.



OR

Both pictures show pad marks

Procedure:

- (1) Measure the lateral runout of front disc plate according to the Workshop Manual.
If it exceeds the limit, machine the disc plate using an on-the-car type lathe and adjust the disc thickness to within the limit.
- Front disc plate runout limit: 0.04mm (at the axial position of 10 mm from the disc plate edge)
 - Minimum front disc plate thickness after machining using a brake lathe on-vehicle: 26.8 mm
- (2) Replace the front brake pads with modified ones according to the Workshop Manual procedure.

Caution: DO NOT use an off-the-car type lathe because it causes the disc plate runout to increase.

PART INFORMATION

Part Number	Part Name	Q'ty	Remark
GHY1-33-28Z	PAD SUB SET	1	Modified one
GHP9-33-251A	PLATE DISC	2	-

WARRANTY INFORMATION

Assembly group	P – Braking System
Subassembly group	01 – FRONT BRAKE
Symptom Code	83
Damage Code	9B
Causal Part No.	7777-SP-J28
Q'ty	0
Operation No. / Labor Hours	Refer to the chart shown below
Period Covered	Normal Warranty Period

<Operation number & Labor hours>

Front disc Replacement	Front disc Machining	Pad Replacement	Operation Number	Labor Hours
X		X	XXJEAXRX	0.5 Hrs
	X	X	XXJEBXRX	1.1 Hrs

NOTE:

If the disc plate thickness is not within the specification, replace it and claim as a related part.

Ryu Shimizugawa
Manager, Technical Information Gr.
Technical Service Dept.
Mazda Motor Corporation
2D22811313 (MC Internal Use)