

# Service Information

Mazda Motor Corporation

3-1, Shinchi, Fuchu-cho, Aki-gun  
Hiroshima 730-8670, Japan  
TEL : 81(82)287-5323  
FAX : 81(82)287-5220



Category <b>P</b>	<b>Repair Guidance</b>	Ref. No. R021/14A	Page 1 of 3
Coverage <input type="checkbox"/> Distributor only <input checked="" type="checkbox"/> Please inform your dealers		Date Issued February 17, 2014	
Please convey this information to your <input type="checkbox"/> Director <input checked="" type="checkbox"/> General Manager <input checked="" type="checkbox"/> Warranty Dept. <input checked="" type="checkbox"/> Parts Dept. <input checked="" type="checkbox"/> Training Dept. <input checked="" type="checkbox"/> Field Rep.		Date Revised May 20, 2014	
Applicable Model CX-5(KE), Mazda6 (GJ) and Mazda3 (BM)		Applicable Countries or Specifications European Models	

**REVISED**

**Revision Note: Mazda6 (GJ) and Mazda3 (BM) models have been added to the applicable model, and the related information has been revised.**

## Subject: Grinding Noise from Front Brake

### DESCRIPTION

Some vehicles may experience a grinding noise from the front brake when applying brake.

### CAUSE

Snow-melting agent on the road causes various centric grooves on the brake disc plate surface. Corrosion occurring in the grooves causes a grinding noise when brake is applied.

### MASS PRODUCTION CHANGE

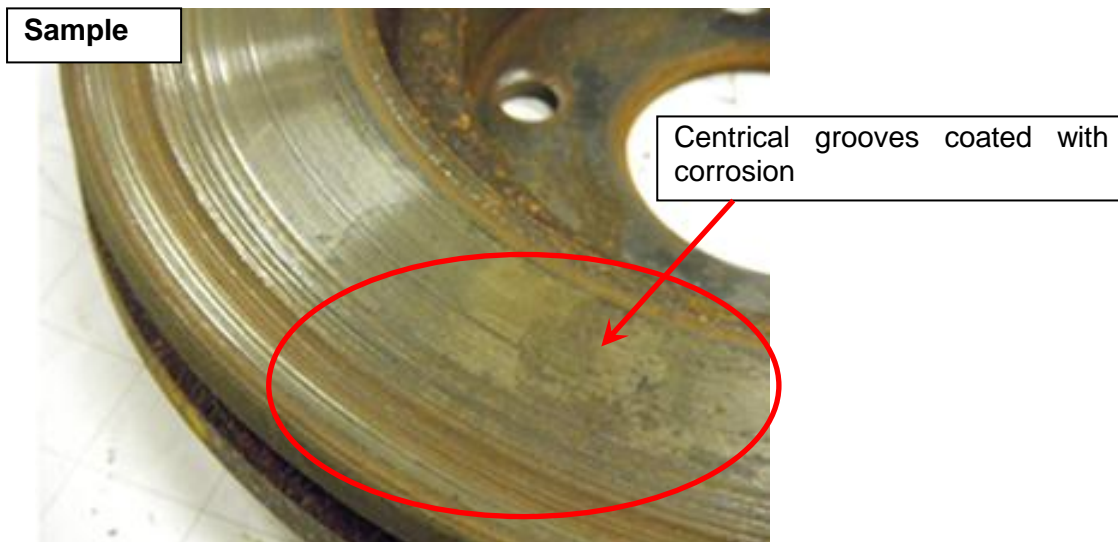
The shape of the front dust cover has been changed.

### BEGINNING VIN & DATE OF MODIFICATION

**CX-5:** **EC Spec.**  
JMZKE\*\*\*\* \*\* 276542 January 29, 2014  
**UK Spec.**  
JMZKE\*\*\*\* \*\*167065 January 29, 2014  
**Mazda6:** **EC Spec.**  
JMZGJ\*\*\*\* \*\* TBD  
**Mazda3:** **EC Spec.**  
JMZBM\*\*\*\* \*\* TBD

### REPAIR PROCEDURE

When you encounter a customer complaint on this concern, inspect if there is corrosion in the grooves on the disc plate (inner and outer) surface first. If corrosion can be confirmed, repair following the procedure below.



Procedure:

1. Replace the left and right dust covers with modified ones.
2. Replace the affected side disc plate with new one(s).
3. For CX-5 and Mazda6, replace the brake pad set with a modified one. For Mazda3, replace the brake pad set with a new one. (b/pads; normal warranty parameters apply)

PARTS INFORMATION

(For CX-5)

Part Number		Part Name	Q'ty	Remark
New	Old			
K0Y1 33 28ZA	-	Pad sub set	1	Modified part
K011 33 251B	-	Disc plate	2	-
D651 33 042A	-	*Nut	2	Replace part
KD45 33 261A	K011 33 261A	*Dust cover (R)	1	-
KD45 33 271A	K011 33 271A	*Dust cover (L)	1	-
T060 26 169A	-	*Snap Pin	2	Replace part

(For Mazda6)

Part Number		Part Name	Q'ty	Remark
New	Old			
GHY1 33 28Z	-	Pad sub set	1	Modified part
GHR1 33 251	-	Disc plate	2	-
D651 33 042A	-	*Nut	2	Replace part
KD45 33 261A	K011 33 261A	*Dust cover (R)	1	-
KD45 33 271A	K011 33 271A	*Dust cover (L)	1	-
T060 26 169A	-	*Snap Pin	2	Replace part

(For Mazda3)

Part Number		Part Name	Q'ty	Remark
New	Old			
BHY1 33 28ZA	-	Pad sub set	1	-
B45A 33 251A	-	Disc plate	2	For 1.5 & 1.6L engine model.
B45G 33 251A	-	Disc plate	2	For 2.0 & 2.2L engine model.
D651 33 042A	-	*Nut	2	Replace part
KD45 33 261A	K011 33 261A	*Dust cover (R)	1	-
KD45 33 271A	K011 33 271A	*Dust cover (L)	1	-
T060 26 169A	-	*Snap Pin	2	Replace part

**\*Note:** Common parts for all 3 models.

WARRANTY INFORMATION

(For CX-5, Mazda6 and Mazda3)

Assembly group	P – Braking System
Subassembly group	01 – FRONT BRAKE
Symptom Code	82
Damage Code	9D
Causal Part No.	KD45-33-261A
Q'ty	1
Operation No. & Labor Hours	XXK14XRX, 1.2 Hrs.
Period Covered	Normal Warranty Period 12500 miles for b/pads
Prior approval necessary	YES (for brake disc replacement)

**Note:** Claim KD45-33-271A (Dust Cover (L)) and other replaced parts as related part.

Ryu Shimizugawa  
Manager, Technical Information Gr.  
Technical Service Dept.  
Mazda Motor Corporation  
2D11404403 (MC Internal Use)