

Service Information

Mazda Motor Corporation

3-1, Shinchi, Fuchu-cho, Aki-gun
Hiroshima 730-8670, Japan
TEL : 81(82)287-5323
FAX : 81(82)287-5220



Category P	Repair Guidance	Ref. No. R021/14	Page 1 of 2
Coverage <input type="checkbox"/> Distributor only <input checked="" type="checkbox"/> Please inform your dealers		Date Issued February 17, 2014	
Please convey this information to your <input type="checkbox"/> Director <input checked="" type="checkbox"/> General Manager <input checked="" type="checkbox"/> Warranty Dept. <input checked="" type="checkbox"/> Parts Dept. <input checked="" type="checkbox"/> Training Dept. <input checked="" type="checkbox"/> Field Rep.		Date Revised	
Applicable Model CX-5(KE)		Applicable Countries or Specifications European Models	

Subject: Grinding Noise from Front Brake

DESCRIPTION

Some vehicles may experience a grinding noise from the front brake when applying brake.

CAUSE

Snow-melting agent on the road causes various central grooves on the brake disc plate surface. Corrosion occurring in the grooves causes a grinding noise when brake is applied.

MASS PRODUCTION CHANGE

The shape of the front dust cover has been changed.

BEGINNING VIN & DATE OF MODIFICATION

EC Spec.

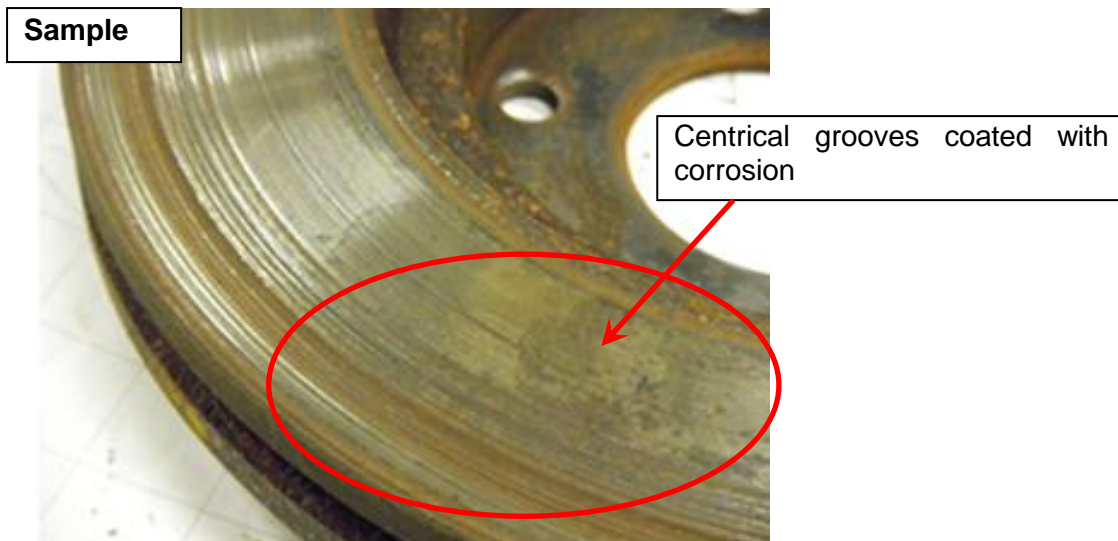
JMZKE**** ** 276542 January 29, 2014

UK Spec.

JMZKE**** **167065 January 29, 2014

REPAIR PROCEDURE

When you encounter a customer complaint on this concern, inspect if there is corrosion in the grooves on the disc plate (inner and outer) surface first. If corrosion can be confirmed, repair following the procedure below.



Procedure:

1. Replace the left and right dust covers with modified ones.
2. Replace the concerned disc plate with new one(s).
3. Replace the brake pad set with a modified one.

Note: Record this repair in the service documentation of the subject vehicle to remember the future use of PAD SUB SET below.

PARTS INFORMATION

Part Number		Part Name	Q'ty
New	Old		
K0Y1 33 28ZA	-	Pad sub set	1
K011 33 251B	-	Disc plate	2
D651 33 042A	-	Nut	2
KD45 33 261A	K011 33 261A	Dust cover (R)	1
KD45 33 271A	K011 33 271A	Dust cover (L)	1
T060 26 169A	-	Snap Pin	2

WARRANTY INFORMATION

Assembly group	P – Braking system
Subassembly group	01 - FRONT BRAKE
Symptom Code	82
Damage Code	9D
Causal Part No.	KD45-33-261A
Q'ty	1
Operation No.	XXK14XRX
Labor Hours	1.2 H
Period Covered	Normal Warranty Period
Prior approval necessary	YES

Note: Claim KD45-33-271A (Dust cover (L)) as related part.

Ryu Shimizugawa
Manager, Technical Information Gr.
Technical Service Dept.
Mazda Motor Corporation
2D11404403 (MC Internal Use)