

Service Information

Mazda Motor Corporation

3-1, Shinchi, Fuchu-cho, Aki-gun
Hiroshima 730-8670, Japan
TEL : 81(82)287-5323
FAX : 81(82)287-5220

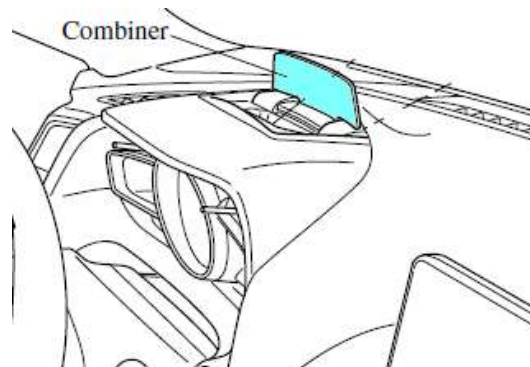


Category T	Repair Guidance	Ref. No. R026/14	Page 1 of 3
Coverage <input type="checkbox"/> Distributor only <input checked="" type="checkbox"/> Please inform your dealers		Date Issued February 27, 2014	
Please convey this information to your <input type="checkbox"/> Director <input checked="" type="checkbox"/> General Manager <input checked="" type="checkbox"/> Warranty Dept. <input checked="" type="checkbox"/> Parts Dept. <input checked="" type="checkbox"/> Training Dept. <input checked="" type="checkbox"/> Field Rep.		Date Revised	
Applicable Model Mazda3 (BM)	Applicable Countries or Specifications Worldwide		

Subject: Vibration of Active Driving Display Combiner

DESCRIPTION

Some customers may complain that the combiner of the Active Driving Display (ADD) vibrates when driving over a road bump or it is impossible to adjust the angle of the ADD up to the viewable position by the commander switch.



CAUSE

The customer might open/close the ADD combiner manually or close the ADD combiner with objects being placed in the ADD combiner storage area, causing the axis of the ADD combiner to pop out of the position.

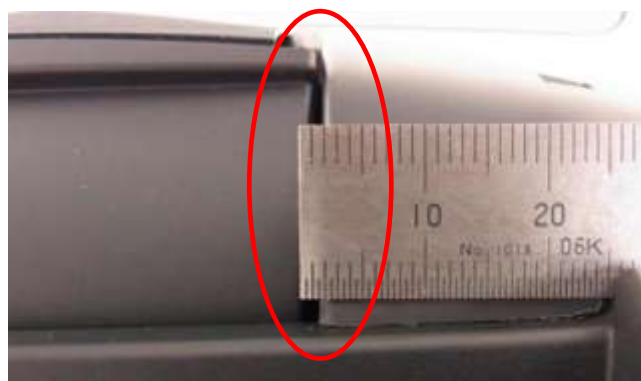
REPAIR PROCEDURE

Verify customer complaint. Use the following procedure to correct the concern.

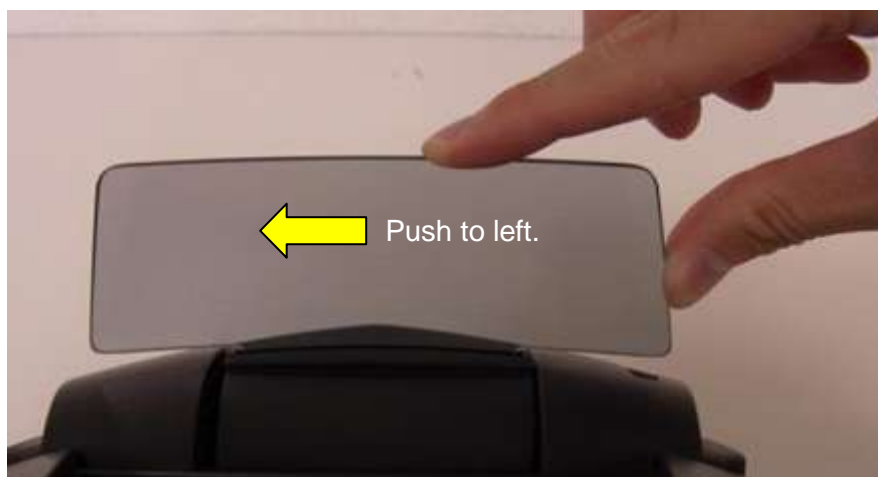
Note: Explain to the customer the ADD handling caution described in the Service Information E028/13.

Procedure:

1. Start the engine to open the ADD combiner, as the work is carried out with the ADD combiner in the open position.
2. To insert a tool, a clearance of 1.0 - 1.5 mm at the right side is necessary.



3. To establish the clearance, hold the edge of the ADD combiner and push it to left lightly.

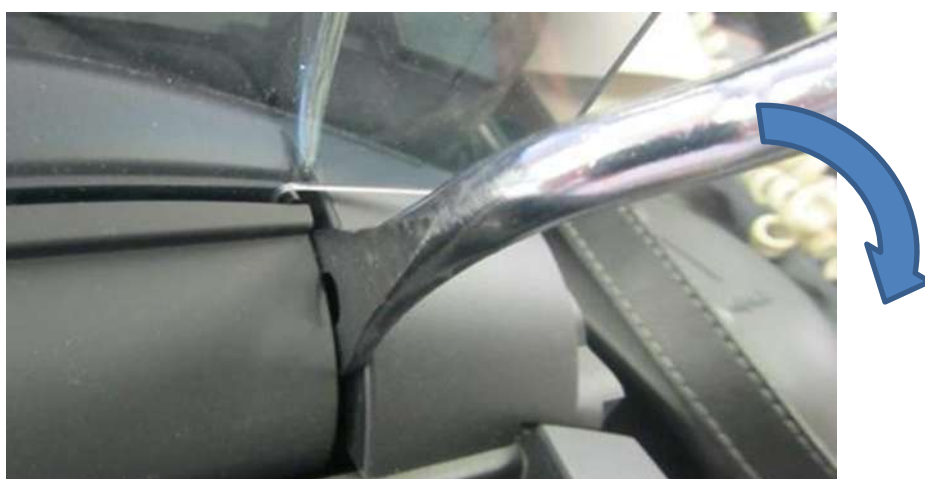


4. To avoid damaging the ADD combiner assembly, wrap protection tape around the tip of the tool, e. g. a retaining clip remover.



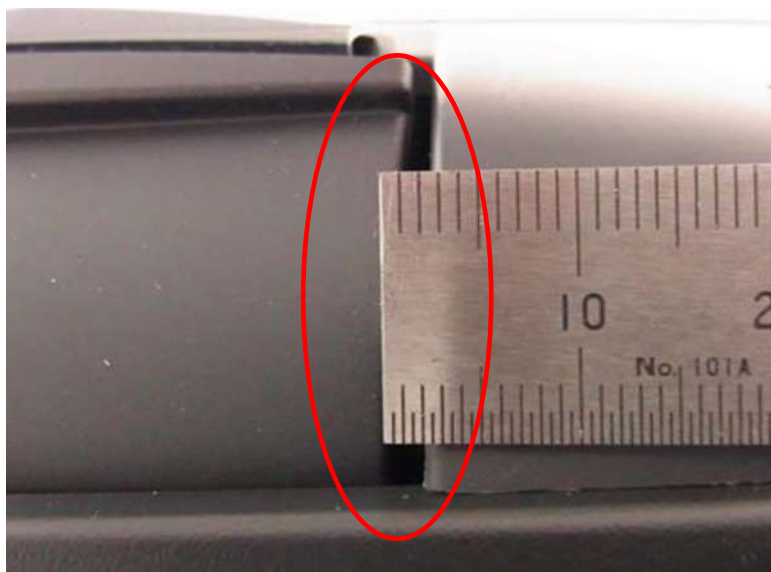
5. Insert the tool in the clearance then push the ADD combiner assembly to left by using the tool as leverage.

Note: Pay attention not to damage the ADD combiner assembly by the tool.



Note: Adjust force applied to the tool by carefully watching the clearance..

6. It is OK if the clearance turned to 2 mm.



7. Verify the repair by the following procedures.
- Turn off the engine and turn it on again. Verify that the ADD combiner closes/opens without problem.
 - Verify that it is possible to adjust the ADD position without problem by the center display and by the commander switch.

WARRANTY INFORMATION

Assembly group	T – Body electrical system
Subassembly group	06 - INSTRUMENT CLUSTER (METER)
Symptom Code	89
Damage Code	97
Causal Part No.	BHR1 55 44X
Q'ty	0
Operation No.	XXK5DXRX
Labor Hours	0.2 Hrs
Period Covered	Normal Warranty Period

Ryu Shimizugawa
Manager, Technical Information Gr.
Technical Service Dept.
Mazda Motor Corporation
1DA2952225 (MC Internal Use)