

Service Information

Mazda Motor Corporation

3-1, Shinchi, Fuchu-cho, Aki-gun
Hiroshima 730-8670, Japan
TEL : 81(82)287-5323
FAX : 81(82)287-5220

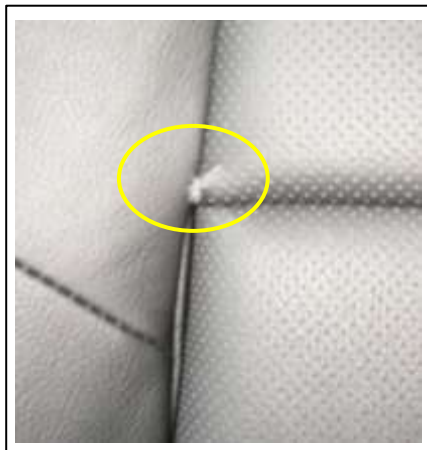


Category S	Repair Guidance	Ref. No. R069/13	Page 1 of 3
Coverage <input type="checkbox"/> Distributor only <input checked="" type="checkbox"/> Please inform your dealers		Date Issued September 6, 2013	
Please convey this information to your <input type="checkbox"/> Director <input checked="" type="checkbox"/> General Manager <input checked="" type="checkbox"/> Warranty Dept. <input checked="" type="checkbox"/> Parts Dept. <input checked="" type="checkbox"/> Training Dept. <input checked="" type="checkbox"/> Field Rep.		Date Revised	
Applicable Model CX-5 (KE) with leather seat	Applicable Countries or Specifications Worldwide		

Subject: Front seat back trim coming apart at seams

DESCRIPTION

Some vehicles may exhibit a condition where the front seat back trim is coming apart at the seams as shown in pictures.



CAUSE

Sewing at the concerned area is not strong enough.

MASS PRODUCTION CHANGE

The sewing method has been changed to increase strength.

BEGINNING VIN & DATE OF MODIFICATION

EU Spec.

JMZ KE***** 207039 March 1, 2013

US Spec.

JM3 KE***** 327345 March 1, 2013

ADR Spec.

JM0 KE***** 202569 March 1, 2013

General Spec.

JM6KE***** 202569 March 1, 2013

JM8KE***** 202569 March 1, 2013

Israel Spec.

JMZ KE***** 202569 March 1, 2013

Algeria Spec.

KE**** 202569 March 1, 2013

China Spec.

JM7KE***** 202569 March 1, 2013

REPAIR PROCEDURE

Replace the front seat back trim with a new modified service part.

PARTS INFORMATION

Part Number		Part Name	Q'ty	Remark
New (Service Part)	Original			
KFY2-88-131	KF39-88-131 02	seat back trim (RH)	1	Confirm the part number in the EPC for the subject VIN and place an order for the corresponding modified service part.
KFY2-88-181	KF39-88-181 02	seat back trim (LH)	1	
KDY2-88-131	KD51-88-131 02	seat back trim (RH)	1	
KDY2-88-181	KD51-88-181 02	seat back trim (LH)	1	
KDY1-88-131	KD51-88-131 34	seat back trim (RH)	1	
KDY1-88-181	KD51-88-181 34	seat back trim (LH)	1	
KFY1-88-131	KF39-88-131 34	seat back trim (RH)	1	
KFY1-88-181	KF39-88-181 34	seat back trim (LH)	1	

WARRANTY INFORMATION

US Spec.

Symptom Code	92
Damage Code	9A
Causal Part No.	****-88-*** ** (Service Part of Seat Back Trim)
Q'ty	1
Operation No. & Labor Hours	Select only one operation number which is applicable to the work performed. XXJBAXRX & 1.1H (Driver seat only) XXJBBXRX & 1.2H (Passenger seat only) XXJBCXRX & 2.1H (Both sides)
Period Covered	Normal warranty period

Except US Spec.

Assembly group	S - Body
Subassembly group	09 - SEATS & SEAT BELTS
Symptom Code	92
Damage Code	9A
Causal Part No.	****-88-*** ** (Service Part of Seat Back Trim)
Q'ty	1
Operation No. & Labor Hours	Select only one operation number which is applicable to the work performed. <u>Without i-stop</u> XXJBDXRX & 1.1H (Driver seat only) XXJBEXRX & 1.0H (Passenger seat only) XXJBFXRX & 1.9H (Both sides) <u>With i-stop</u> XXJBGXRX & 1.1H (One side) XXJBHXRX & 2.0H (Both sides)
Period Covered	Normal warranty period
Prior Approval necessary	YES

Ryu Shimizugawa
Manager, Technical Information Gr.
Technical Service Dept.
Mazda Motor Corporation
2C51711933 (MC Internal Use)