

Service Information

Mazda Motor Corporation

3-1, Shinchi, Fuchu-cho, Aki-gun
Hiroshima 730-8670, Japan
TEL : 81(82)287-5323
FAX : 81(82)287-5220

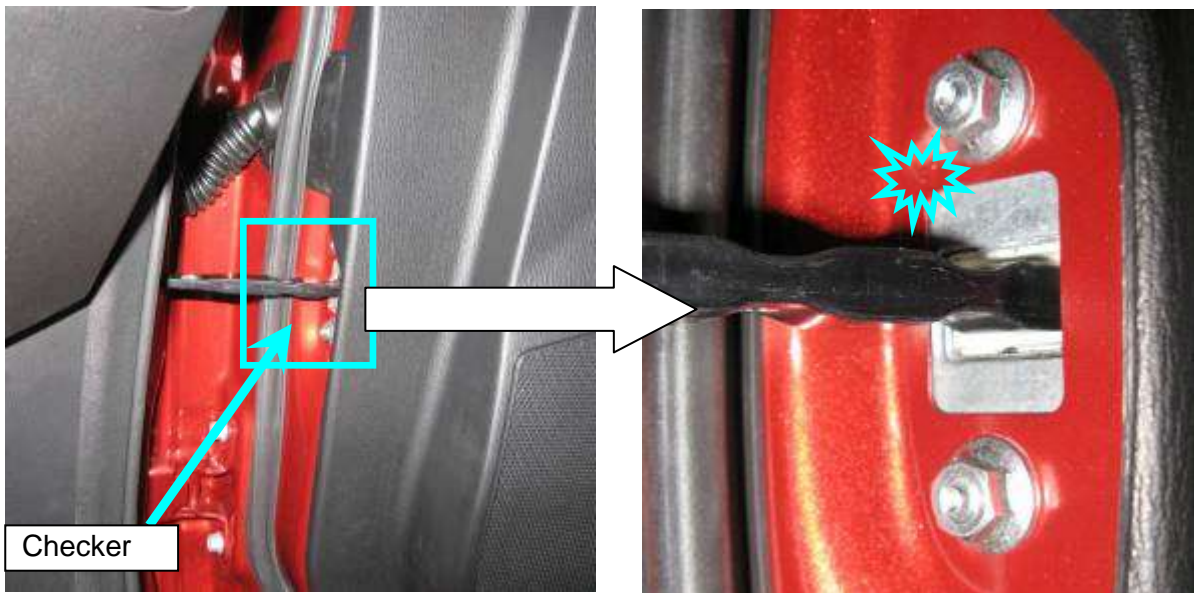


Category S	Repair Guidance	Ref. No. R022/13	Page 1 of 2
Coverage <input type="checkbox"/> Distributor only <input checked="" type="checkbox"/> Please inform your dealers		Date Issued March 13, 2013	
Please convey this information to your <input type="checkbox"/> Director <input checked="" type="checkbox"/> General Manager <input checked="" type="checkbox"/> Warranty Dept. <input checked="" type="checkbox"/> Parts Dept. <input checked="" type="checkbox"/> Training Dept. <input checked="" type="checkbox"/> Field Rep.		Date Revised	
Applicable Model CX-5 (KE)		Applicable Countries or Specifications Worldwide	

Subject: Noise from Front Door Checker Installation Location

DESCRIPTION

Some vehicles may experience noise from front door checker installation location when opening front door.



CAUSE

When the door is fully opened, the door checker is over stroked which causes a crack at the spot welding area around the door checker. Then the noise occurs when door is opened.

MASS PRODUCTION CHANGE

TBD

BEGINNING VIN & DATE OF MODIFICATION

TBD

REPAIR PROCEDURE

When you encounter a customer complaint on this concern, check the welding point on the body panel.

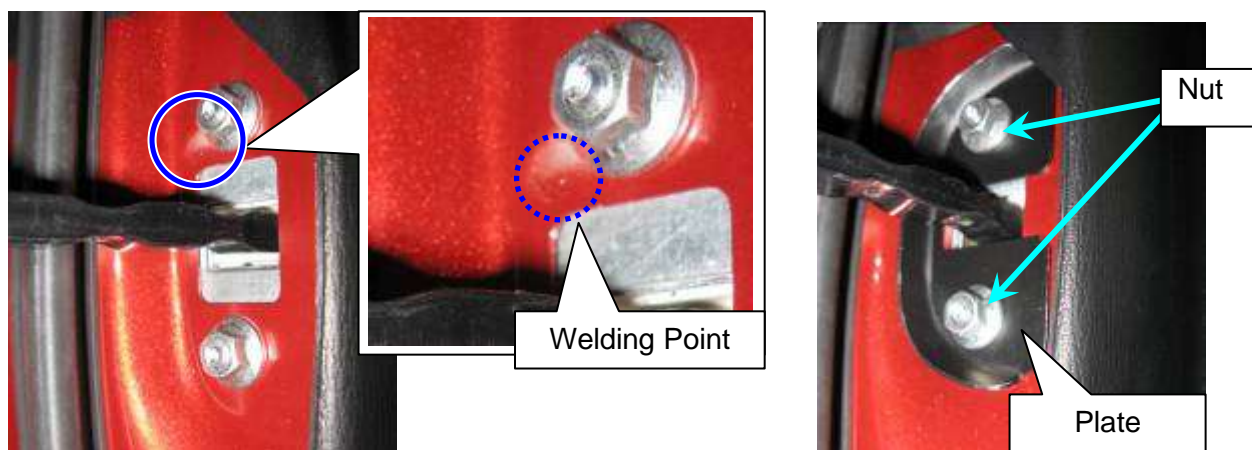
If there is crack on the body panel, repair it as follows.

Crack only (No rust):

- 1) Apply any grease, such as molybdenum grease or lithium grease, about 0.3 ml per one side, on welding point (Crack Area).
- 2) Install a plate on the body panel as shown in below photo. (Both Sides)
Tightening Torque: 8 - 12 N·m {82 - 122 kgf·cm, 71 - 106 in·lbf}

Crack & Rust:

- 1) Remove any rust from the body panel.
- 2) Apply primer surfacer.
- 3) Apply touch up paint.
- 4) Install a plate on the body panel as shown in below photo. (Both Sides)
Tightening Torque: 8 - 12 N·m {82 - 122 kgf·cm, 71 - 106 in·lbf}



PART INFORMATION

Part Number	Part Name	Q'ty
KDY3 58 279	Plate (Checker Reinforcement)	2

WARRANTY INFORMATION

Assembly group	S - Body
Subassembly group	10 - FRONT DOORS
Symptom Code	82
Damage Code	9A
Causal Part No.	KDY3 58 279
Q'ty	2
Operation No.	XXH8UXX
Labor Hours	0.2 H
Period Covered	Normal Warranty Period

Note: If painting is required, claim it with sublet code "A1".

Mitsunori Tokunaga
Manager, Technical Information Gr.
Technical Service Dept.
Mazda Motor Corporation
1C73045855(MC Internal Use)