

|  |                                |
|--|--------------------------------|
| <b>Subject:</b><br><br>HORN SOUNDS BY ITSELF | <b>Bulletin No:</b> 09-024/12  |
|  | <b>Last Issued:</b> 06/27/2012 |

## APPLICABLE MODEL(S)/VINS

2013 CX-5 vehicles with VINs lower than JM3KE\*\*\*\*\*110830 (produced February 29, 2012)

## DESCRIPTION

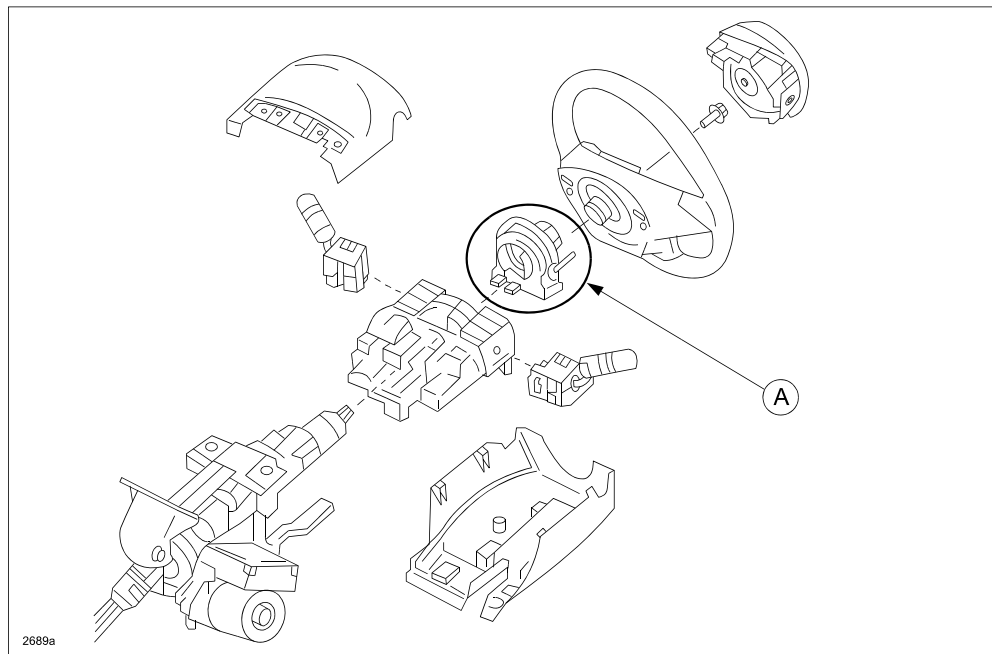
Some vehicles may exhibit a horn that suddenly and continuously sounds by itself. This condition may occur after the vehicle is parked in cold ambient temperatures of 32 degrees F (0 degrees C) or below for several hours, then moved into a warmer shop or garage.

This concern may be caused by an internal short circuit of the clock spring.

Customers having this concern should have their vehicle repaired using the following repair procedure.

## REPAIR PROCEDURE

1. Verify the customer concern.
2. Inspect the clock spring (A) according to the instructions on MS3 online or the Workshop Manual (section 08-10 CLOCK SPRING INSPECTION [STANDARD DEPLOYMENT CONTROL SYSTEM]) or CLOCK SPRING INSPECTION [TWO-STEP DEPLOYMENT CONTROL SYSTEM]).
  - If any problems are found during the inspection, go to next step.
  - If no problems are found during the inspection, inspect other horn circuits according to MS3 online or the Workshop Manual.



|  |                                |
|--|--------------------------------|
| <b>Bulletin No:</b> 09-024/12<br>© 2012 Mazda Motor of America, Inc. | <b>Last Issued:</b> 06/27/2012 |
|--|--------------------------------|

3. Replace the clock spring with a modified part according to the instructions on MS3 online or the Workshop Manual (section 08-10 CLOCK SPRING REMOVAL/INSTALLATION [STANDARD DEPLOYMENT CONTROL SYSTEM]) or CLOCK SPRING REMOVAL/INSTALLATION [TWO-STEP DEPLOYMENT CONTROL SYSTEM]).
4. Verify the repair

## PART(S) INFORMATION

| Part Number | Description  | Qty. | Notes                          |
|-------------|--------------|------|--------------------------------|
| KD33-66-CS0 | Clock Spring | 1    | with halogen type headlights   |
| KD35-66-CS0 | Clock Spring | 1    | with discharge type headlights |

## WARRANTY INFORMATION

### NOTE:

- This warranty information applies only to verified customer complaints on vehicles eligible for warranty repair.
- This repair will be covered under Mazda's New Vehicle Limited Warranty term.
- Additional diagnostic time cannot be claimed for this repair.

|                                 |                            |
|---------------------------------|----------------------------|
| Warranty Type                   | A                          |
| Symptom Code                    | 64                         |
| Damage Code                     | 9W                         |
| Part Number Main Cause          | KD33-66-CS0 or KD35-66-CS0 |
| Quantity                        | 1                          |
| Operation Number / Labor Hours: | XXH4KXRX / 0.3 Hrs.        |