

Service Information

Mazda Motor Corporation

3-1, Shinchi, Fuchu-cho, Aki-gun
Hiroshima 730-8670, Japan
TEL : 81(82)287-5323
FAX : 81(82)287-5220



Category ZOT	Technical	Ref. No. E050/12	Page 1 of 3
Coverage <input type="checkbox"/> Distributor only <input checked="" type="checkbox"/> Please inform your dealers		Date Issued November 20, 2012	
Please convey this information to your <input type="checkbox"/> Director <input checked="" type="checkbox"/> General Manager <input checked="" type="checkbox"/> Warranty Dept. <input checked="" type="checkbox"/> Parts Dept. <input checked="" type="checkbox"/> Training Dept. <input checked="" type="checkbox"/> Field Rep.		Date Revised	
Applicable Model Mazda6 (GJ)		Applicable Countries or Specifications Worldwide	

Subject: Handling Caution for Trailer Transportation

DESCRIPTION

This Service Information is to advise you on handling caution for Mazda6 (GJ) trailer transportation.

1. Loading and Unloading

Please see the sketch below. Your special attention is requested to prevent possible nose/underbody striking during the loading and unloading operation.

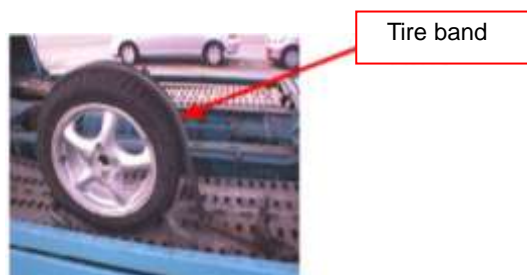
★ Check Point !

Loading and Unloading from Trailer				
Trial Result				

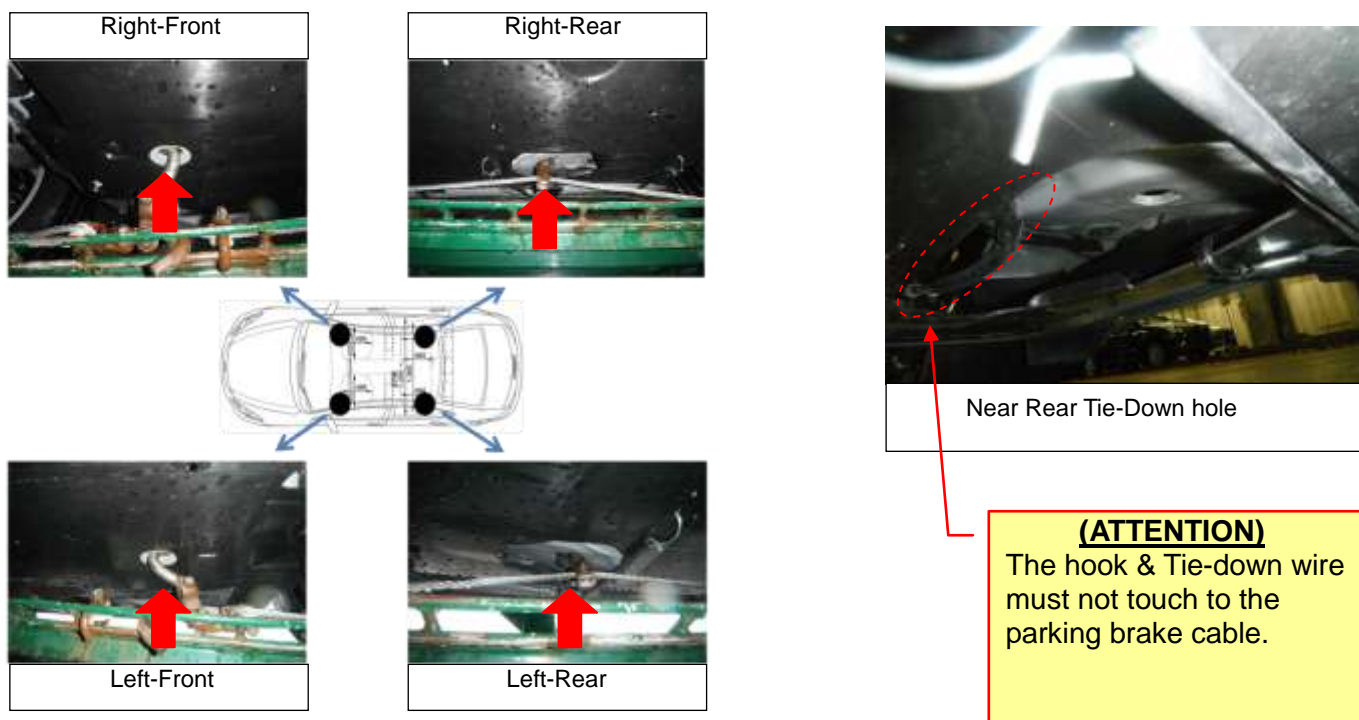
- (1) Use Rubber Mats on the edges of ramp if nose/underbody striking is anticipated.
- (2) **Avoid "Reverse Loading" as much as possible.** There only is a small clearance under the front bumper.
- (3) Keep slowest speed when loading and unloading.

2. Tie Down

- (1) Secure the vehicle with tire bands as shown in the picture.



(2) If tire bands are not available, hook from the locations as shown in the following pictures



NOTE

Do not use the eyebolts on the bumper for trailer transportation. This may result in damage to the eyebolt / bumper. For trailer transportation, there are four slots available underneath of the vehicle. Please instruct your truck carriers not to use the eyebolts on the bumper for securing in trailer.

3. Engine start and stop with advanced keyless system

The key system is "New advanced keyless system", same as for CX-5. The procedure of engine start and stop is the same as for CX-5. To start the engine, always use the transmitter.



3-1. Engine start procedure

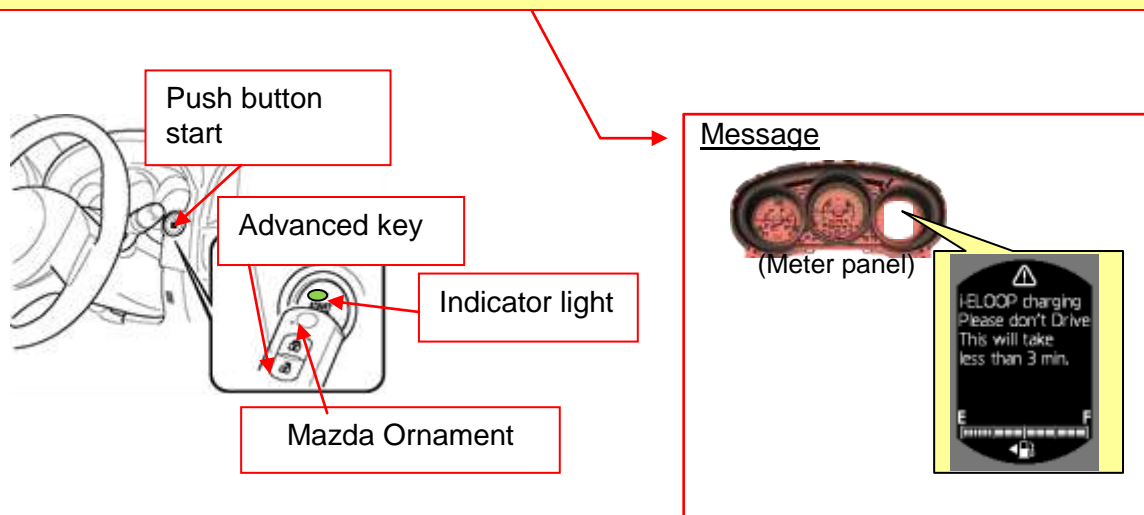
As the room fuse is not installed at the assembly plant, following operation is required to start the engine.

- (1) Depress the brake pedal.
- (2) Fully depress the clutch pedal on a manual transmission vehicle.
- (3) Verify that the push button start indicator light (green) flashes.
- (4) Touch the push button start using the backside of the key while the push button start indicator light (green) flashes.

- (5) After the push button start indicator light (green) changes to full illumination, press the push button start.

(ATTENTION)

The message, as shown in the below picture, may be displayed on the meter panel when the engine is started. The message will disappear after about 10 seconds, therefore make sure the message is no longer displayed before driving.



3-2. Engine stop procedure

- (1) Stop the vehicle completely.
- (2) (Manual transaxle) Shift into neutral.
(Automatic transaxle) Shift the shift lever to the "P" position.
- (3) Press the push button start to turn off the engine. The ignition position is "OFF".

3-3. Push button start positions

Each time the push button start is pressed, the ignition switches in the order as shown below.

OFF ⇒ ACC ⇒ ON ⇒ OFF

Caution: When leaving the vehicle, make sure the push button start is pressed to off.

Verify that the push button start indicator light is off.

(If the indicator (yellow) is on, the system is still in "ACC" position.)

