


2013-2014 CX-5 and 2014 Mazda6 TPMS (UPDATE)

The Tire Pressure Monitoring System (TPMS) indirectly inspects the tire pressures and warns the driver. This system must be initialized when:

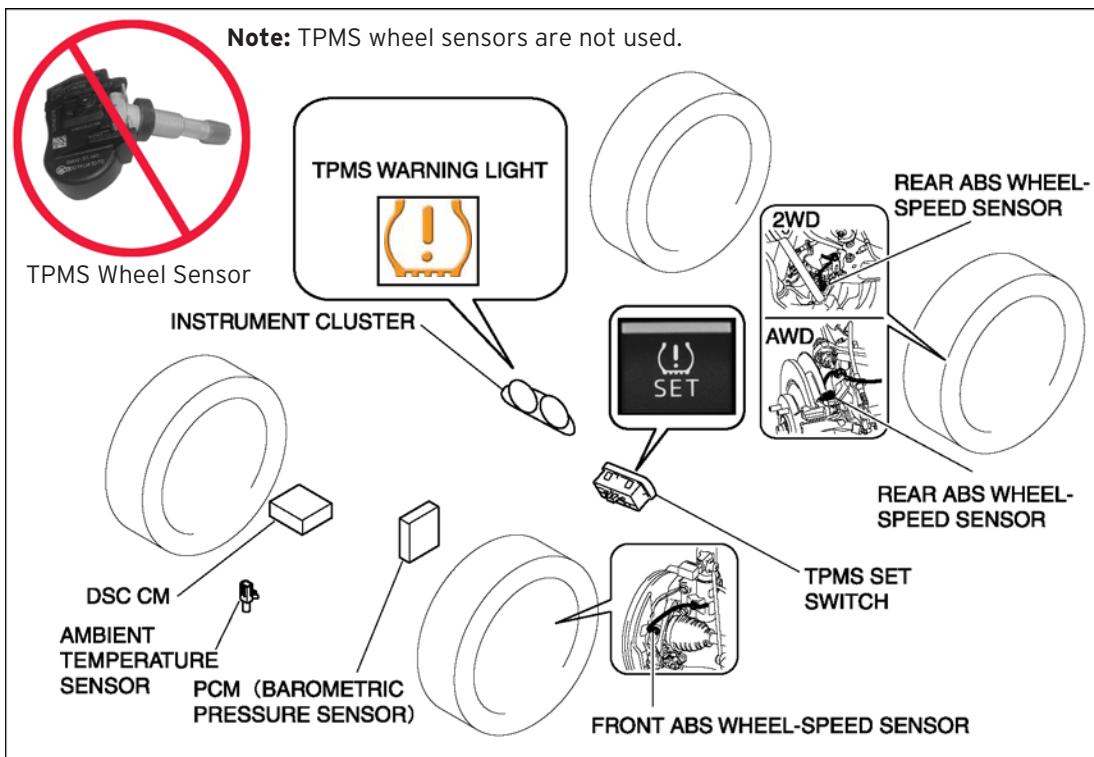
- Tire pressure is adjusted up or down in one or more tires.
- Tires have been rotated.
- Tires or wheels have been replaced.
- The vehicle's battery is disconnected or has been discharged.
- The Dynamic Stability Control (DSC HU/CM) connector has been disconnected.

1. Park the vehicle in a safe place and firmly apply the parking brake.
2. Let the tires cool, then adjust tire pressure to the specified pressure on the driver's door jamb label.
3. Switch the ignition ON, but leave the vehicle parked.
4. Push and hold the TPMS "SET" switch (left side of dash) until the TPMS warning light  in the instrument cluster flashes twice and a beep sound is heard once.



CAUTION: If the TPMS "SET" switch is pressed without adjusting the tire pressure (this condition is known as Misuse Mode), the system cannot detect the normal tire pressure. The TPMS warning light may not illuminate, even if the tire pressure is low, or may illuminate if the tire pressure is normal.

TPMS Layout



PRE-DELIVERY INSPECTION (PDI) STEPS 1, 3 AND 4:

To ensure a problem-free vehicle sales delivery, PDI Step 1 (VEHICLE RECEIVING PROCESS), PDI Step 3 (MAZDA NEW CAR GET READY INSPECTION), and Smart Start Guide Step 4 (CUSTOMER DELIVERY CHECKLIST) have been revised to include the TPMS initialization procedure.

STEP 1: VEHICLE RECEIVING PROCESS

STEP 1: MAZDA 6 VEHICLE RECEIVING PROCESS

REFER TO THE WORKSHOP MANUAL FOR DETAILED ADJUSTMENT PROCEDURES

The steps in this inspection sheet are designed for efficient movement around the vehicle.
 * Problems found during inspection should be noted on a repair order.
 * Unless otherwise stated, each item should be inspected for fit, appearance and/or operation.
 * Inspection items followed by an asterisk (*) are not required.

GENERAL

- Check vehicle for any open Recalls, SSPs, or MSPs
- Remove wrapping from Smart Keyless Transmitters
- REMOVE all protective wrap, covers, and window stickers
- INSTALL Wheel covers or center caps*

EXTERIOR

INSPECT and ADJUST, if necessary, the following items:

- Glass, exterior bright metal and paint for damage
- Door operation and alignment including side doors and liftgate
- All washers/wipers for damage or detachment
- Operation of fuel filler lid opener
- Operation of hood release and lock
- Smart Keyless operation*
- Check all exterior lighting, including daytime running light

UNDER HOOD - ENGINE OFF

INSPECT and ADJUST, if necessary, the following items:

- CONFIRM INSTALL: Fuse for accessories
- Fuel, engine coolant, and hydraulic lines, fittings, connections, and components for leaks
- Engine oil level
- Braided duct fluid level
- Washer tank fluid level
- Washer coolant level
- Tightness of battery terminals and check battery using Midtronics GRS Battery Management System and confirm battery voltage 12.4 V.

ON HOIST

INSPECT the following items:

- Steering linkage, suspension, exhaust system, and all underneath hardware for looseness or damage
- Tire for cuts or bruises

LOWER VEHICLE AND REMOVE FROM RACK

- Adjust tire pressures to mfg. specification on door jamb label (including spare)
- Initialize the TPMS. Switch the ignition ON, then press & hold TPMS SET switch until the TPMS warning light flashes twice and one beep is heard
- Wheel Lug nuts (Torque to 65-87 ft-lbf / 88-118 Nm / 9-12 kgfm)

ROAD TEST - ENGINE RUNNING AT OPERATION TEMPERATURE

INSPECT the following items:

- Check that engine starts with all keys
- Steering wheel alignment (centered)
- Brake operation
- Steering control
- Engine general performance
- Operation of Cruise control system*
- Operation of blind spot monitoring system
- Operation of meters and gauges
- Operation of speed response auto door lock function
- Operation of AFS* (Adaptive Front-Lighting System)
- Steaks, rattles, & abnormal noises
- All warning lights are off

Unless the vehicle is scheduled for display or immediate delivery, do not remove the exterior protective film or interior protective covering during inspection.

VIN: []

Adjust tire pressures to mfg. specification on door jamb label (including spare)

Initialize the TPMS. Switch the ignition ON, then press & hold TPMS SET switch until TPMS warning light flashes twice and one beep is heard

STEP 3: MAZDA NEW CAR GET READY INSPECTION

STEP 3: MAZDA NEW CAR GET READY INSPECTION

Problems found during inspection should be noted and your Sales Consultant and Sales Manager informed about any service that is needed.

FUNCTIONAL CHECKS BEFORE DELIVERY

UNDER HOOD - ENGINE OFF

- Visually inspect fluid condition and level (engine, transmission, brake, clutch, coolant, windshield washer, battery)
- Check battery terminal tightness
- Check if battery voltage is at a minimum of 12.4 volts. Charge if necessary. Record battery voltage in table below.
- Visually inspect underhood components
- Complete Step 3 of 'New Vehicle Inventory Battery Maintenance Record'

GENERAL - EXTERIOR

- Adjust tire pressure to mfg. specification on door jamb label (including spare). Record tire pressure in table below.
- Initialize the TPMS. Switch the ignition ON, then press and hold the TPMS "Set Switch" until the TPMS warning light flashes twice and one beep is heard.
- Check fuel level and if needed, fill with 87 octane or higher, depending on gas odor label. (Always deliver with a full tank.)
- After washing and drying the vehicle, perform 'Appearance Checks Before Delivery'

APPEARANCE CHECKS BEFORE DELIVERY

In addition to function checks, also perform one last inspection of key areas of the vehicle to ensure they are clean and free of chips & scratches.

Check and repair chips and scratches:	Remove Dirt & Scratches from key areas:
<input type="checkbox"/> Door edges	<input type="checkbox"/> Door sill scuff plates
<input type="checkbox"/> Around door handles	<input type="checkbox"/> Door inner panel
<input type="checkbox"/> Door dings & dents	<input type="checkbox"/> Seats
<input type="checkbox"/> Hood leading edges	<input type="checkbox"/> Carpets & floor mats
<input type="checkbox"/> Bumper covers	<input type="checkbox"/> Steering wheel
	<input type="checkbox"/> Center console

Record TPMS Reset

Yes or No	
-----------	--

Record Battery Voltage (V)

volts	
-------	--

Record Tire Pressures (PSI)

RH	Front	psi
RH	Rear	psi
LH	Front	psi
LH	Rear	psi
	Spare Tire	psi

Note: Battery voltage and tire pressures should be recorded after charging the battery and/or adjusting the tire pressures.

THIS NEW CAR GET READY INSPECTION HAS BEEN PERFORMED BY A QUALIFIED NEW CAR SPECIALIST

VIN: []

Sales or Service Manager: []

Inspected by New Car Specialist: []

Dealer Code: []

Date: []

STEP 4: CUSTOMER DELIVERY CHECKLIST

Customer Delivery Checklist

DEALERSHIP	DATE
SALES CONSULTANT	CUSTOMER'S NAME
VIN	E-MAIL

PRESENTATION OF OWNER'S MATERIALS:
Review the following items with the customer

- Smart Start Guide**
 - Remove this checklist from Smart Start Guide
 - Personalization Features (refer to your Owner's Manual)
- Warranty Information**
 - Warranty Start Date: _____
 - Customer Initial: _____
 - Basic Vehicle - 36 months/36,000 miles
 - Roadside assistance program
- www.MyMazda.com**
 - Offer to register customer on www.MyMazda.com
- Owner's Manual**
- Service Department**
 - Introduce Service Manager, provide business cards
 - Review Service and Parts Department hours of operation
 - Explain free Full Circle Service Inspection
 - Schedule first maintenance service
- Maintenance Passport**
- Floor Mats**
 - Ensure floor mats are properly hooked after cleaning
 - Do not install two floor mats, one on top of the other, on the driver side
 - Accessory rubber floor mats should be cleaned with mild soap and water only
- Tire Pressure Monitoring System**
 - System overview
 - Demonstrate how to reset the TPMS
 - Push and hold the "SET switch" until the TPMS warning light flashes twice and one beep is heard
 - Review the system Caution



STEP 4: CUSTOMER DELIVERY CHECKLIST

*Demonstrate how to reset the TPMS

Failing to complete the TPMS initialization procedure will cause the TPMS warning light to illuminate after the customer takes delivery of the vehicle. This may result in:

- Negative customer satisfaction due to comeback repairs.
- Negatively impact your dealership's Initial Quality Survey (IQS) scores.
- PDI claim debit.