

Service Information

Mazda Motor Corporation

3-1, Shinchi, Fuchu-cho, Aki-gun
Hiroshima 730-8670, Japan
TEL : 81(82)287-5323
FAX : 81(82)287-5220



Category S	Repair Guidance	Ref. No. R020/12	Page 1 of 3
Coverage <input type="checkbox"/> Distributor only <input checked="" type="checkbox"/> Please inform your dealers		Date Issued March 1, 2012	
Please convey this information to your <input type="checkbox"/> Director <input checked="" type="checkbox"/> General Manager <input checked="" type="checkbox"/> Warranty Dept. <input checked="" type="checkbox"/> Parts Dept. <input checked="" type="checkbox"/> Training Dept. <input checked="" type="checkbox"/> Field Rep.		Date Revised	
Applicable Model CX-5 (KE)		Applicable Countries or Specifications Europe and North America	

Subject: Large Clearance on top of A-pillar Trim

DESCRIPTION

Some vehicles may exhibit large clearance on top of A-pillar which gives poor appearance as shown below.



CAUSE

A-pillar trim clip did not fit properly due to a piece of curtain air bag caught in the clip.

MASS PRODUCTION CHANGE

A piece of curtain air bag has been fixed.

BEGINNING VIN & DATE OF MODIFICATION

US Spec.

JM3 KE ***** 103449 January 24, 2012

EC Spec.

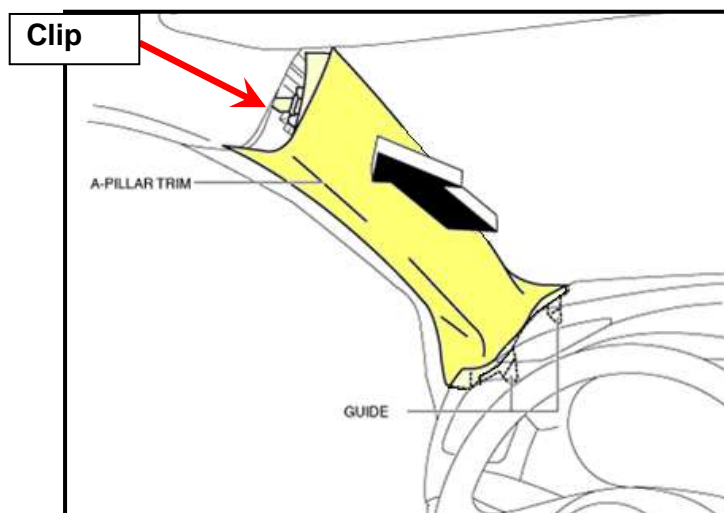
JMZ KE ***** 109498 January 24, 2012

REPAIR PROCEDURE

When you encounter a customer complaint on this concern, tighten the A-pillar trim as per the following procedure.

Procedure:

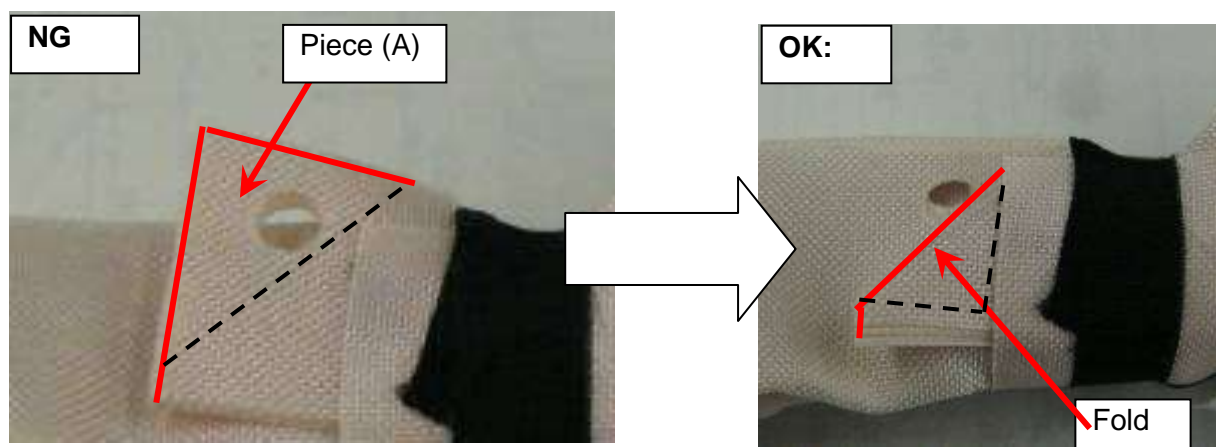
1. Remove the A-pillar trim according to workshop manual.



2. If a piece of curtain air bag (A) is caught in the clip, go to next step.
(If air bag is not caught in the clip, this information does not apply.)



3. Fold the piece of curtain air bag (A).



4. Install the A-pillar trim using the new clip (Part No.D651-68-162A).

PART INFORMATION

Part Number	Part Name	Q'ty
D651 68 162A	Clip	1/ One Side

WARRANTY INFORMATION

Assembly group	S - Body
Subassembly group	17 - TRIMS & MATS
Symptom Code	89
Damage Code	9G
Causal Part No.	D651 68 162A
Q'ty	1 or 2
Operation No.	XXH2XXRX
Labor Hours	0.2 Hrs (One side or both sides)
Period Covered	Normal warranty period

Shinji Kanai
Manager, Technical Information Gr.
Technical Service Dept.
Mazda Motor Corporation
2C21521833 (MC Internal Use)